

Product Datasheet

Human Apolipoprotein E/ApoE ELISA Kit (Colorimetric) KA1031

Unit Size: 1 Kit

Storage of components varies. See protocol for specific instructions.

www.novusbio.com



technical@novusbio.com

Publications: 11

Protocols, Publications, Related Products, Reviews, Research Tools and Images at:
www.novusbio.com/KA1031

Updated 10/23/2024 v.20.1

**Earn rewards for product
reviews and publications.**

Submit a publication at www.novusbio.com/publications

Submit a review at www.novusbio.com/reviews/destination/KA1031

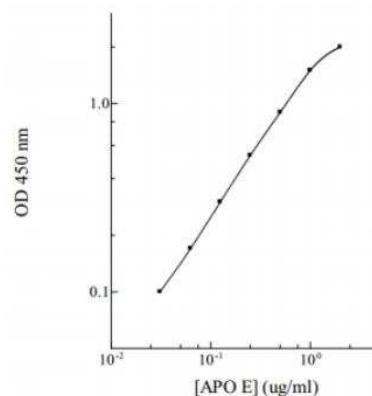


KA1031**Human Apolipoprotein E/ApoE ELISA Kit (Colorimetric)**

Product Information	
Unit Size	1 Kit
Concentration	Concentration is not relevant for this product. Please see the protocols for proper use of this product.
Storage	Storage of components varies. See protocol for specific instructions.
Product Description	
Description	APOE (Human) ELISA Kit is a sandwich enzyme immunoassay for the quantitative measurement of human APOE.
Gene ID	348
Gene Symbol	APOE
Species	Human
Kit Components	Human Apolipoprotein E Microplate: A 96-well polystyrene microplate (12 strips of 8 wells) coated with a polyclonal antibody against human Apo-E., Sealing Tapes: Pressure-sensitive sealing tapes that can be cut to fit the format of the individual assay., Human Apolipoprotein E Standard: Human Apo-E in a buffered protein base, lyophilized., Biotinylated Human Apolipoprotein E Antibody (50x): A 50-fold concentrated biotinylated polyclonal antibody against human Apo-E., MIX Diluent Concentrate (10x): A 10-fold concentrated buffered protein base., Standard Diluent (1x): A buffered protein base with stabilizer., Wash Buffer Concentrate (20x): A 20-fold concentrated buffered surfactant., SP Conjugate (100x): A 100-fold concentrate., Chromogen Substrate (1x): A stabilized peroxidase chromogen substrate tetramethylbenzidine., Stop Solution (1x): A 0.5 N hydrochloric acid solution to stop the chromogen substrate reaction.
Notes	This product is produced by and distributed for Abnova, a company based in Taiwan.
Standard Curve Range	0.016 to 1 ug/mL
Sensitivity	4.3 ng/mL
Inter Assay	CV% < 7.60%
Intra Assay	CV% < 4.60%
Assay Type	Sandwich ELISA
Spiking Recovery	99.50%
Suitable Sample Type	Cell Culture Supernatants, CSF, Plasma, Serum
Sample Volume	50 uL
Product Application Details	
Applications	ELISA, Quantification
Recommended Dilutions	ELISA, Quantification

Images

ELISA: Apolipoprotein E/ApoE ELISA Kit [HRP] [KA1031] - Standard curve



Publications

Chandra B, Shiny N, Glenn B et al. Neuroinflammation in neuronopathic Gaucher disease: Role of microglia and NK cells, biomarkers, and response to substrate reduction therapy. *Elife*. 2022-08-16 [PMID: 35972072]

Furuya H, Pagano I, Chee K et al. Comparison of Commercial ELISA Kits, a Prototype Multiplex Electrochemoluminescent Assay, and a Multiplex Bead-Based Immunoassay for Detecting a Urine-Based Bladder-Cancer-Associated Diagnostic Signature. *Diagnostics (Basel)*. 2019-10-29 [PMID: 31671775]

Kara E, Marks JD, Roe AD et al. A flow cytometry-based in vitro assay reveals that formation of apolipoprotein E (ApoE)-amyloid beta complexes depends on ApoE isoform- and cell type. *J Biol Chem* 2018-06-27 [PMID: 29950521]

Burt TD, Agan BK, Marconi VC et al. Apolipoprotein (apo) E4 enhances HIV-1 cell entry in vitro, and the APOE epsilon4/epsilon4 genotype accelerates HIV disease progression. *Proc Natl Acad Sci U S A*. 2008-06-24 [PMID: 18562290]

Schultz MR, Lyons MJ, Franz CE et al. Apolipoprotein E genotype and memory in the sixth decade of life. *Neurology*. 2008-05-06 [PMID: 18235080]

Shimizu Y, Furuya H, Bryant Greenwood P et al. A multiplex immunoassay for the non-invasive detection of bladder cancer. *J Transl Med* 2016-01-30 [PMID: 26830497] (ELISA)

Rosser CJ, Chang M, Dai Y et al. Urinary Protein Biomarker Panel for the Detection of Recurrent Bladder Cancer. *Cancer Epidemiol Biomarkers Prev*. 2014-04-08 [PMID: 24714076]

Goodison S, Chang M, Dai Y et al. A multi-analyte assay for the non-invasive detection of bladder cancer. *PLoS One*. 2012-01-01 [PMID: 23094052]

Urquidi V, Goodison S, Ross S et al. Diagnostic potential of urinary alpha1-antitrypsin and apolipoprotein E in the detection of bladder cancer. *J Urol*. 2012-12-01 [PMID: 23088986] (Human)

Rosser CJ, Ross S, Chang M et al. Multiplex protein signature for the detection of bladder cancer in voided urine samples. *J Urol*. 2013-12-01 [PMID: 23764080] (Human)

Chen LM, Chang M, Dai Y et al. External validation of a multiplex urinary protein panel for the detection of bladder cancer in a multicenter cohort. *Cancer Epidemiol Biomarkers Prev*. 2014-09-01 [PMID: 24920641] (ELISA, Human)



Novus Biologicals USA

10730 E. Briarwood Avenue
Centennial, CO 80112
USA
Phone: 303.730.1950
Toll Free: 1.888.506.6887
Fax: 303.730.1966
nb-customerservice@bio-techne.com

Bio-Techne Canada

21 Canmotor Ave
Toronto, ON M8Z 4E6
Canada
Phone: 905.827.6400
Toll Free: 855.668.8722
Fax: 905.827.6402
canada.inquires@bio-techne.com

Bio-Techne Ltd

19 Barton Lane
Abingdon Science Park
Abingdon, OX14 3NB, United Kingdom
Phone: (44) (0) 1235 529449
Free Phone: 0800 37 34 15
Fax: (44) (0) 1235 533420
info.EMEA@bio-techne.com

General Contact Information

www.novusbio.com
Technical Support: nb-technical@bio-techne.com
Orders: nb-customerservice@bio-techne.com
General: novus@novusbio.com

Products Related to KA1031

NBP2-49450PEP	Apolipoprotein E/ApoE Recombinant Protein Antigen
210-TA-005	TNF-alpha [Unconjugated]
NB110-60531	Apolipoprotein E/ApoE Antibody (WUE-4) - BSA Free
7954-GM-010/CF	GM-CSF [Unconjugated]

Limitations

This product is for research use only and is not approved for use in humans or in clinical diagnosis. ELISA Kits are guaranteed for 6 months from date of receipt.

For more information on our 100% guarantee, please visit www.novusbio.com/guarantee

Earn gift cards/discounts by submitting a review: www.novusbio.com/reviews/submit/KA1031

Earn gift cards/discounts by submitting a publication using this product:
www.novusbio.com/publications

