

Product Datasheet

Mouse Laminin ELISA Kit (Colorimetric) KA0380

Unit Size: 1 Kit

Store at 4C short term. Aliquot and store at -20C long term. Avoid freeze-thaw cycles.

www.novusbio.com



technical@novusbio.com

Publications: 3

Protocols, Publications, Related Products, Reviews, Research Tools and Images at:
www.novusbio.com/KA0380

Updated 10/23/2024 v.20.1

Earn rewards for product
reviews and publications.

Submit a publication at www.novusbio.com/publications

Submit a review at www.novusbio.com/reviews/destination/KA0380



KA0380**Mouse Laminin ELISA Kit (Colorimetric)**

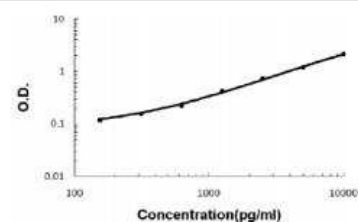
Product Information	
Unit Size	1 Kit
Concentration	Concentration is not relevant for this product. Please see the protocols for proper use of this product.
Storage	Store at 4C short term. Aliquot and store at -20C long term. Avoid freeze-thaw cycles.

Product Description	
Description	Quality control test: Standard curve. Laminin (Mouse) ELISA Kit is a sandwich enzyme immunoassay for the quantitative measurement of mouse laminin.
Gene ID	284217
Gene Symbol	LAMA1
Species	Mouse
Kit Components	96-well plate precoated with anti- mouse Laminin antibody, Lyophilized mouse Laminin standard, Biotinylated anti-mouse Laminin antibody, dilution 1:100, Avidin-Biotin-Peroxidase Complex (ABC), dilution 1:100, Sample diluent buffer, Antibody diluent buffer, ABC diluent buffer, TMB color developing agent, TMB stop solution
Notes	This product is produced by and distributed for Abnova, a company based in Taiwan.
Standard Curve Range	156 to 10000 pg/mL
Sensitivity	10 pg/mL
Assay Type	Sandwich ELISA
Suitable Sample Type	Cell lysates, Cell Culture Supernatant, Plasma (EDTA, Heparin), Serum
Sample Volume	100 uL

Product Application Details	
Applications	ELISA, Quantification
Recommended Dilutions	ELISA, Quantification

Images

ELISA: Mouse Laminin ELISA Kit (Colorimetric) [KA0380] - Standard curve for Mouse Laminin ELISA Kit (Colorimetric) [KA0380].



Publications

Sasaki M, Kato S, Kohno K et al. Sequence of the cDNA encoding the laminin B1 chain reveals a multidomain protein containing cysteine-rich repeats. Proc Natl Acad Sci U S A. 1987-02-01 [PMID: 3493487]

Nagayoshi T, Mattei MG, Passage E et al. Human laminin A chain (LAMA) gene: chromosomal mapping to locus 18p11.3. Genomics. 1989-11-01 [PMID: 2591971]

Haaparanta T, Uitto J, Ruoslahti E, Engvall E. Molecular cloning of the cDNA encoding human laminin A chain. Matrix. 1991-06-01 [PMID: 1714537]





Novus Biologicals USA

10730 E. Briarwood Avenue
Centennial, CO 80112
USA
Phone: 303.730.1950
Toll Free: 1.888.506.6887
Fax: 303.730.1966
nb-customerservice@bio-techne.com

Bio-Techne Canada

21 Canmotor Ave
Toronto, ON M8Z 4E6
Canada
Phone: 905.827.6400
Toll Free: 855.668.8722
Fax: 905.827.6402
canada.inquires@bio-techne.com

Bio-Techne Ltd

19 Barton Lane
Abingdon Science Park
Abingdon, OX14 3NB, United Kingdom
Phone: (44) (0) 1235 529449
Free Phone: 0800 37 34 15
Fax: (44) (0) 1235 533420
info.EMEA@bio-techne.com

General Contact Information

www.novusbio.com
Technical Support: nb-technical@bio-techne.com
Orders: nb-customerservice@bio-techne.com
General: novus@novusbio.com

Products Related to KA0380

NBP2-42389PEP	Laminin Recombinant Protein Antigen
236-EG-200	EGF [Unconjugated]
NB300-144	Laminin Antibody
NB100-56503	Cytochrome c Antibody (7H8.2C12) - BSA Free

Limitations

This product is for research use only and is not approved for use in humans or in clinical diagnosis. ELISA Kits are guaranteed for 6 months from date of receipt.

For more information on our 100% guarantee, please visit www.novusbio.com/guarantee

Earn gift cards/discounts by submitting a review: www.novusbio.com/reviews/submit/KA0380

Earn gift cards/discounts by submitting a publication using this product:
www.novusbio.com/publications

