

# Product Datasheet

## LRG1 Antibody (2E3) - Azide and BSA Free H00116844-M01

Unit Size: 0.1 mg

Aliquot and store at -20C or -80C. Avoid freeze-thaw cycles.

[www.novusbio.com](http://www.novusbio.com)



[technical@novusbio.com](mailto:technical@novusbio.com)

### Publications: 6

Protocols, Publications, Related Products, Reviews, Research Tools and Images at:  
[www.novusbio.com/H00116844-M01](http://www.novusbio.com/H00116844-M01)

Updated 2/21/2025 v.20.1

Earn rewards for product  
reviews and publications.

Submit a publication at [www.novusbio.com/publications](http://www.novusbio.com/publications)

Submit a review at [www.novusbio.com/reviews/destination/H00116844-M01](http://www.novusbio.com/reviews/destination/H00116844-M01)



**H00116844-M01**

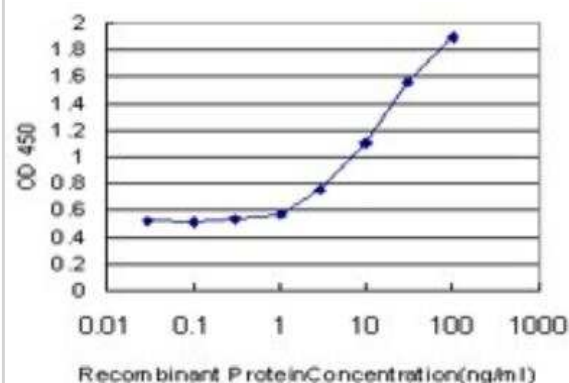
LRG1 Antibody (2E3) - Azide and BSA Free

Product Information	
Unit Size	0.1 mg
Concentration	Concentrations vary lot to lot. See vial label for concentration. If unlisted please contact technical services.
Storage	Aliquot and store at -20C or -80C. Avoid freeze-thaw cycles.
Clonality	Monoclonal
Clone	2E3
Preservative	No Preservative
Isotype	IgG2b Kappa
Purity	IgG purified
Buffer	In 1x PBS, pH 7.4
Product Description	
Host	Mouse
Gene ID	116844
Gene Symbol	LRG1
Species	Human
Reactivity Notes	Other species not tested.
Specificity/Sensitivity	leucine-rich alpha-2-glycoprotein 1
Immunogen	LRG1 (AAH34389, 37 a.a. ~ 347 a.a) full-length recombinant protein with GST tag. MW of the GST tag alone is 26 KDa. TLSPKDCQVFRPDHGSSISCQPPAEIPGYLPADTVHLAVEFFNLTHLPANLLQG ASKLQELHLSSNGLESLSPEFLRPVPQLRVLDLTRNALTGLPSGLFQASATLDT LVLKENQLEVLEVSWLHGLKALGHLDLSGNRLRKLPPGLLANFTLLRTL DLGEN QLETLPD L LRGPLQLERLHLEGNKLQVLGKDLLLPQPDRLYLFLNGNKLARVA AGAFQGLRQLDMLDLSNNSLASVPEGLWASLGQPNWDMRDGFDISGNPWIC DQNLSDLRWLQAQRDKMFSQNDTRCAGPEAVKGQTLLAVAKSQ
Notes	This product is produced by and distributed for Abnova, a company based in Taiwan.
Product Application Details	
Applications	Western Blot, ELISA, Immunocytochemistry/ Immunofluorescence
Recommended Dilutions	Western Blot 1:500, ELISA 1:100-1:2000, Immunocytochemistry/ Immunofluorescence
Application Notes	Antibody reactive against recombinant protein with GST tag on ELISA and Western Blot. GST tag alone is used as a negative control.



## Images

ELISA: LRG1 Antibody (2E3) [H00116844-M01] - Detection limit for recombinant GST tagged LRG1 is approximately 0.3ng/ml as a capture antibody.



## Publications

Ronald J, Katherine S, LeeAnn H et al. Intracellular leucine-rich alpha-2-glycoprotein-1 competes with Apaf-1 for binding cytochrome c in protecting MCF-7 breast cancer cells from apoptosis. *Apoptosis*. 2021-01-01 [PMID: 33386492]

Singh H, Yu Y, Suh MJ et al. Type 1 Diabetes: Urinary Proteomics and Protein Network Analysis Support Perturbation of Lysosomal Function. *Theranostics* 2017-07-07 [PMID: 28819457]

Druhan LJ, Lance A, Li S et al. Leucine Rich alpha-2 Glycoprotein: A Novel Neutrophil Granule Protein and Modulator of Myelopoiesis. *PLoS One* 2017-01-12 [PMID: 28081565]

Lynch J, Fay J, Meehan M et al. MiRNA-335 Suppresses Neuroblastoma Cell Invasiveness By Direct Targeting of Multiple Genes from the non-Canonical TGF- $\beta$  Signalling Pathway. *Carcinogenesis*. 2012-03-01 [PMID: 22382496]

Satoh K, Maniwa T, Oda T, Matsumoto K. Proteomic profiling for the identification of serum diagnostic biomarkers for abdominal and thoracic aortic aneurysms. *Proteome Sci*. 2013-06-27 [PMID: 23802875]

Banfi C, Parolari A, Brioschi M et al. Proteomic analysis of plasma from patients undergoing coronary artery bypass grafting reveals a protease/antiprotease imbalance in favor of the serpin alpha1-antichymotrypsin. *J Proteome Res* 2010-05-07 [PMID: 20302328] (WB, Human)



### **Novus Biologicals USA**

10730 E. Briarwood Avenue  
Centennial, CO 80112  
USA  
Phone: 303.730.1950  
Toll Free: 1.888.506.6887  
Fax: 303.730.1966  
nb-customerservice@bio-techne.com

### **Bio-Techne Canada**

21 Canmotor Ave  
Toronto, ON M8Z 4E6  
Canada  
Phone: 905.827.6400  
Toll Free: 855.668.8722  
Fax: 905.827.6402  
canada.inquires@bio-techne.com

### **Bio-Techne Ltd**

19 Barton Lane  
Abingdon Science Park  
Abingdon, OX14 3NB, United Kingdom  
Phone: (44) (0) 1235 529449  
Free Phone: 0800 37 34 15  
Fax: (44) (0) 1235 533420  
info.EMEA@bio-techne.com

### **General Contact Information**

[www.novusbio.com](http://www.novusbio.com)  
Technical Support: nb-technical@bio-techne.com  
Orders: nb-customerservice@bio-techne.com  
General: novus@novusbio.com

### **Products Related to H00116844-M01**

HAF007	Goat anti-Mouse IgG Secondary Antibody [HRP]
NB720-B	Rabbit anti-Mouse IgG (H+L) Secondary Antibody [Biotin]
NBP1-43317-0.5mg	Mouse IgG2b Kappa Light Chain Isotype Control (MG2b)
NBP1-82823PEP	LRG1 Recombinant Protein Antigen

### **Limitations**

This product is for research use only and is not approved for use in humans or in clinical diagnosis. Primary Antibodies are guaranteed for 1 year from date of receipt.

For more information on our 100% guarantee, please visit [www.novusbio.com/guarantee](http://www.novusbio.com/guarantee)

Earn gift cards/discounts by submitting a review: [www.novusbio.com/reviews/submit/H00116844-M01](http://www.novusbio.com/reviews/submit/H00116844-M01)

Earn gift cards/discounts by submitting a publication using this product:  
[www.novusbio.com/publications](http://www.novusbio.com/publications)

