

# Product Datasheet

## SCYL1 Antibody (2E5) - Azide and BSA Free H00057410-M02

Unit Size: 0.1 mg

Aliquot and store at -20C or -80C. Avoid freeze-thaw cycles.

[www.novusbio.com](http://www.novusbio.com)



[technical@novusbio.com](mailto:technical@novusbio.com)

### Publications: 1

Protocols, Publications, Related Products, Reviews, Research Tools and Images at:  
[www.novusbio.com/H00057410-M02](http://www.novusbio.com/H00057410-M02)

Updated 2/21/2025 v.20.1

Earn rewards for product  
reviews and publications.

Submit a publication at [www.novusbio.com/publications](http://www.novusbio.com/publications)

Submit a review at [www.novusbio.com/reviews/destination/H00057410-M02](http://www.novusbio.com/reviews/destination/H00057410-M02)



**H00057410-M02**

SCYL1 Antibody (2E5) - Azide and BSA Free

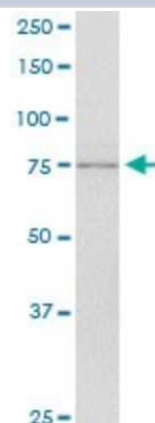
Product Information	
Unit Size	0.1 mg
Concentration	Concentrations vary lot to lot. See vial label for concentration. If unlisted please contact technical services.
Storage	Aliquot and store at -20C or -80C. Avoid freeze-thaw cycles.
Clonality	Monoclonal
Clone	2E5
Preservative	No Preservative
Isotype	IgG2a Kappa
Purity	IgG purified
Buffer	In 1x PBS, pH 7.4

Product Description	
Host	Mouse
Gene ID	57410
Gene Symbol	SCYL1
Species	Human, Mouse, Rat
Specificity/Sensitivity	SCYL1 - SCY1-like 1 ( <i>S. cerevisiae</i> ) (2E5)
Immunogen	SCYL1 (AAH09967, 373 a.a. ~ 472 a.a) partial recombinant protein with GST tag. MW of the GST tag alone is 26 KDa. DHKSSKSPESDWSSWEAEGSWEQGWQEPSSQEPPPDGTRLASEYNWGGPESDDKGDPFATLSARPSTQDRSRLSWPGRSARSGGGRWRPNAPRGRWPRAP
Notes	This product is produced by and distributed for Abnova, a company based in Taiwan.

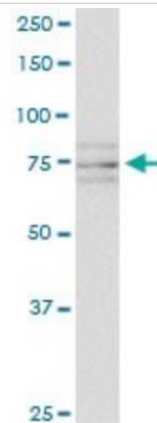
Product Application Details	
Applications	Western Blot, ELISA, Sandwich ELISA
Recommended Dilutions	Western Blot 1:500, ELISA, Sandwich ELISA
Application Notes	Antibody reactive against cell lysate and recombinant protein for western blot. It has also been used for ELISA.

**Images**

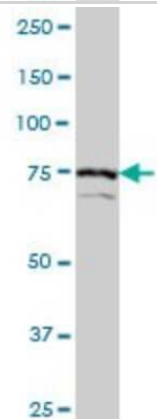
Western Blot: SCYL1 Antibody (2E5) [H00057410-M02] - SCYL1 monoclonal antibody (M02), clone 2E5. Analysis of SCYL1 expression in NIH/3T3.



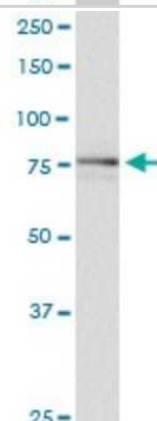
Western Blot: SCYL1 Antibody (2E5) [H00057410-M02] - SCYL1 monoclonal antibody (M02), clone 2E5. Analysis of SCYL1 expression in PC-12.



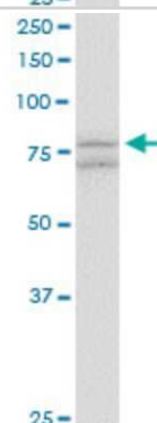
Western Blot: SCYL1 Antibody (2E5) [H00057410-M02] - SCYL1 monoclonal antibody (M02), clone 2E5. Analysis of SCYL1 expression in Hela S3 NE.



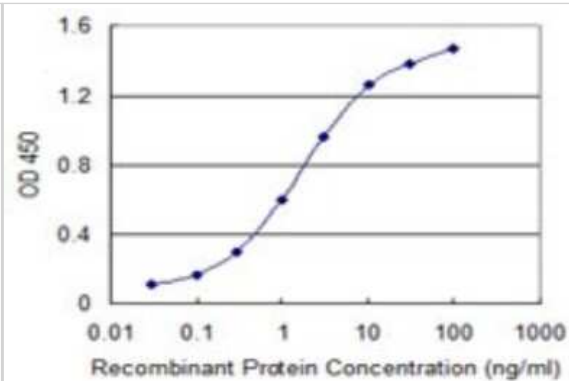
Western Blot: SCYL1 Antibody (2E5) [H00057410-M02] - SCYL1 monoclonal antibody (M02), clone 2E5. Analysis of SCYL1 expression in A-431.



Western Blot: SCYL1 Antibody (2E5) [H00057410-M02] - SCYL1 monoclonal antibody (M02), clone 2E5. Analysis of SCYL1 expression in human ovarian cancer.



Sandwich ELISA: SCYL1 Antibody (2E5) [H00057410-M02] - Detection limit for recombinant GST tagged SCYL1 is 0.03 ng/ml as a capture antibody.



## Publications

Wu HY, Tseng VS, Chen LC et al. Identification of Tyrosine-Phosphorylated Proteins Associated with Lung Cancer Metastasis using Label-Free Quantitative Analyses. *J Proteome Res.* 2010-06-23 [PMID: 20572634]





### **Novus Biologicals USA**

10730 E. Briarwood Avenue  
Centennial, CO 80112  
USA  
Phone: 303.730.1950  
Toll Free: 1.888.506.6887  
Fax: 303.730.1966  
nb-customerservice@bio-techne.com

### **Bio-Techne Canada**

21 Canmotor Ave  
Toronto, ON M8Z 4E6  
Canada  
Phone: 905.827.6400  
Toll Free: 855.668.8722  
Fax: 905.827.6402  
canada.inquires@bio-techne.com

### **Bio-Techne Ltd**

19 Barton Lane  
Abingdon Science Park  
Abingdon, OX14 3NB, United Kingdom  
Phone: (44) (0) 1235 529449  
Free Phone: 0800 37 34 15  
Fax: (44) (0) 1235 533420  
info.EMEA@bio-techne.com

### **General Contact Information**

www.novusbio.com  
Technical Support: nb-technical@bio-techne.com  
Orders: nb-customerservice@bio-techne.com  
General: novus@novusbio.com

### **Products Related to H00057410-M02**

---

HAF007	Goat anti-Mouse IgG Secondary Antibody [HRP]
NB720-B	Rabbit anti-Mouse IgG (H+L) Secondary Antibody [Biotin]
NBP1-96981-0.5mg	Mouse IgG2a Kappa Isotype Control (M2AK)
NBP1-83365PEP	SCYL1 Recombinant Protein Antigen

---

### **Limitations**

This product is for research use only and is not approved for use in humans or in clinical diagnosis. Primary Antibodies are guaranteed for 1 year from date of receipt.

For more information on our 100% guarantee, please visit [www.novusbio.com/guarantee](http://www.novusbio.com/guarantee)

Earn gift cards/discounts by submitting a review: [www.novusbio.com/reviews/submit/H00057410-M02](http://www.novusbio.com/reviews/submit/H00057410-M02)

Earn gift cards/discounts by submitting a publication using this product:  
[www.novusbio.com/publications](http://www.novusbio.com/publications)

