

Product Datasheet

Recombinant Human PPHLN1 GST (N-Term) Protein H00051535-P01-10ug

Unit Size: 10 ug

Store at -80C. Avoid freeze-thaw cycles.

www.novusbio.com



technical@novusbio.com

Protocols, Publications, Related Products, Reviews, Research Tools and Images at:
www.novusbio.com/H00051535-P01

Updated 10/23/2024 v.20.1

Earn rewards for product
reviews and publications.

Submit a publication at www.novusbio.com/publications

Submit a review at www.novusbio.com/reviews/destination/H00051535-P01

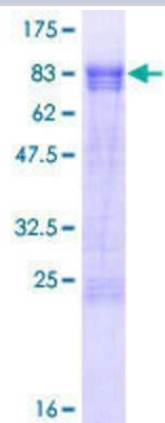


H00051535-P01-10ug**Recombinant Human PPHLN1 GST (N-Term) Protein**

Product Information	
Unit Size	10 ug
Concentration	Please see the vial label for concentration. If unlisted please contact technical services.
Storage	Store at -80C. Avoid freeze-thaw cycles.
Preservative	No Preservative
Purity	>80% by SDS-PAGE and Coomassie blue staining
Buffer	50 mM Tris-HCl, 10 mM reduced Glutathione, pH 8.0 in the elution buffer.
Target Molecular Weight	69.8 kDa
Product Description	
Description	<p>A recombinant protein with GST tag at N-terminal corresponding to the amino acids 1-374 of Human PPHLN1</p> <p>Source: <i>Wheat Germ (in vitro)</i></p> <p>Amino Acid Sequence: MAYRRDEMWSEGRYEYERIPRERAPPRSHPSDGYNRLVNIVPKKPPLDRPG EGSYNRYYSHVDYRDYDEGRSFSHDRRSGPPHRGDESGYRWTRDDHSASR QPEYRDMRDGFRRKSFYSSHARERSPYKRDNTFFRESPVGRKDSPHSRSG SSVSSRSYSPERSKSYSFHQSQHRKSVRPGASYKRQNEGNPERDKERPVS LKTSRDTSPSSGSAVSSSKVLDKPSRLTEKELAEAASKWAAEKLEKSDES NLP EISEYEAGSTAPLFTDQPEEPESNTTHGIELFEDSQLTTRSKAIASKTKEIEQVY RQDCETFGMVVKMLIEKDPSLEKSIQFALRQNLHEIGERCVEELKHFIAEYDTST QDFGEPF</p>
Gene ID	51535
Gene Symbol	PPHLN1
Species	Human
Preparation Method	in vitro wheat germ expression system
Details of Functionality	This protein was produced in an in vitro wheat germ expression system that should preserve correct conformational folding that is necessary for biological function. While it is possible that this protein could display some level of activity, the functionality of this protein has not been explicitly measured or validated.
Notes	This product is produced by and distributed for Abnova, a company based in Taiwan.
Product Application Details	
Applications	Western Blot, ELISA, Protein Array, Immunoaffinity Purification
Recommended Dilutions	Western Blot, ELISA, Protein Array, Immunoaffinity Purification

Images

12.5% SDS-PAGE Stained with Coomassie Blue.





Novus Biologicals USA

10730 E. Briarwood Avenue
Centennial, CO 80112
USA
Phone: 303.730.1950
Toll Free: 1.888.506.6887
Fax: 303.730.1966
nb-customerservice@bio-techne.com

Bio-Techne Canada

21 Canmotor Ave
Toronto, ON M8Z 4E6
Canada
Phone: 905.827.6400
Toll Free: 855.668.8722
Fax: 905.827.6402
canada.inquires@bio-techne.com

Bio-Techne Ltd

19 Barton Lane
Abingdon Science Park
Abingdon, OX14 3NB, United Kingdom
Phone: (44) (0) 1235 529449
Free Phone: 0800 37 34 15
Fax: (44) (0) 1235 533420
info.EMEA@bio-techne.com

General Contact Information

www.novusbio.com
Technical Support: nb-technical@bio-techne.com
Orders: nb-customerservice@bio-techne.com
General: novus@novusbio.com

Products Related to H00051535-P01-10ug

NBP1-89480PEP	PPHLN1 Recombinant Protein Antigen
AF835	Caspase-3 Antibody [Unconjugated] - Active
NBP1-89480	PPHLN1 Antibody
NB100-56340	HDAC1 Antibody

Limitations

This product is for research use only and is not approved for use in humans or in clinical diagnosis. Peptides and proteins are guaranteed for 3 months from date of receipt.

For more information on our 100% guarantee, please visit www.novusbio.com/guarantee

Earn gift cards/discounts by submitting a review: www.novusbio.com/reviews/submit/H00051535-P01

Earn gift cards/discounts by submitting a publication using this product:
www.novusbio.com/publications

