

Product Datasheet

GOLM1 Antibody (5B10) - Azide and BSA Free H00051280-M06-100ug

Unit Size: 100 ug

Aliquot and store at -20C or -80C. Avoid freeze-thaw cycles.

www.novusbio.com



technical@novusbio.com

Publications: 6

Protocols, Publications, Related Products, Reviews, Research Tools and Images at:
www.novusbio.com/H00051280-M06

Updated 2/21/2025 v.20.1

**Earn rewards for product
reviews and publications.**

Submit a publication at www.novusbio.com/publications

Submit a review at www.novusbio.com/reviews/destination/H00051280-M06



H00051280-M06-100ug

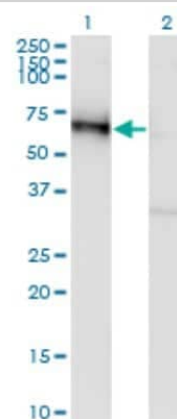
GOLM1 Antibody (5B10) - Azide and BSA Free

| Product Information | |
|-----------------------------|---|
| Unit Size | 100 ug |
| Concentration | This product is unpurified. The exact concentration of antibody is not quantifiable. |
| Storage | Aliquot and store at -20C or -80C. Avoid freeze-thaw cycles. |
| Clonality | Monoclonal |
| Clone | 5B10 |
| Preservative | No Preservative |
| Isotype | IgG1 Kappa |
| Purity | Ascites |
| Buffer | In 1x PBS, pH 7.4 |
| Product Description | |
| Host | Mouse |
| Gene ID | 51280 |
| Gene Symbol | GOLM1 |
| Species | Human |
| Specificity/Sensitivity | GOLPH2 - golgi phosphoprotein 2 (5B10) |
| Immunogen | GOLM1 (NP_057632, 302 a.a. ~ 401 a.a) partial recombinant protein with GST tag. MW of the GST tag alone is 26 KDa. VQAALSVSQENPEMEGPERDQLVIPDGQEEEQEAAGEGRNQKLRGEDDYN MDENEAESETDKQAALAGNDRNIDVFNVEDQKRDTINLLDQREKRNHTL |
| Notes | This product is produced by and distributed for Abnova, a company based in Taiwan. |
| Product Application Details | |
| Applications | Western Blot, ELISA, Immunocytochemistry/ Immunofluorescence, Immunohistochemistry, Immunohistochemistry-Paraffin |
| Recommended Dilutions | Western Blot 1:500, ELISA, Immunohistochemistry, Immunocytochemistry/ Immunofluorescence, Immunohistochemistry-Paraffin |
| Application Notes | Antibody reactive against recombinant protein for Western Blot. Has also been used for immunohistochemistry (paraffin) and ELISA. |

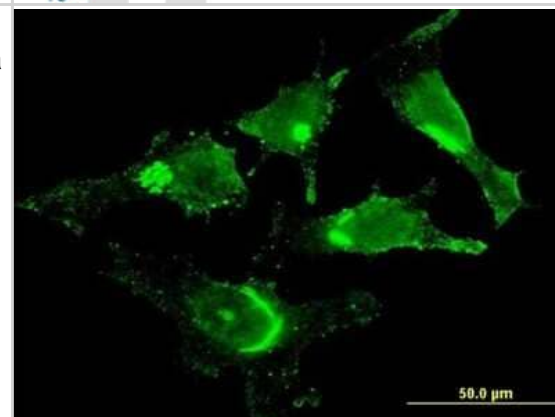


Images

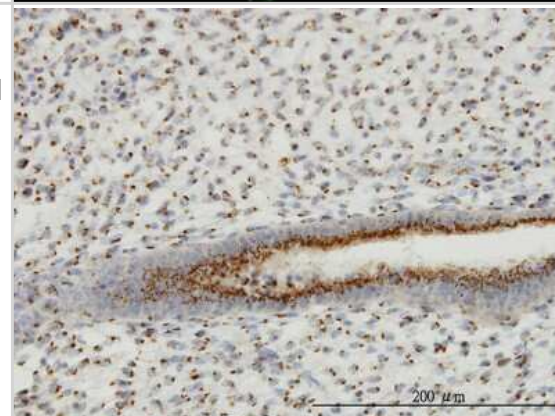
Western Blot: GOLM1 Antibody (5B10) [H00051280-M06] - Analysis of GOLM1 expression in transfected 293T cell line by GOLM1 monoclonal antibody (M06), clone 5B10. Lane 1: GOLM1 transfected lysate (45.3 KDa). Lane 2: Non-transfected lysate.



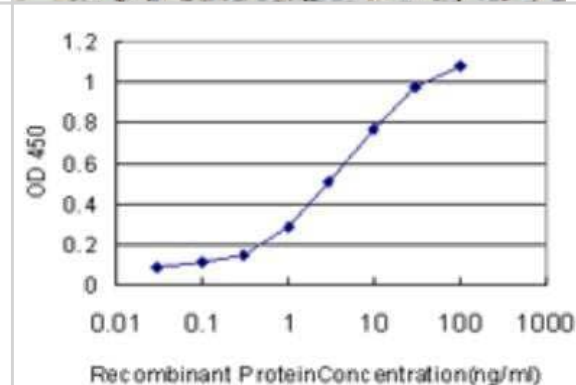
Immunocytochemistry/Immunofluorescence: GOLM1 Antibody (5B10) [H00051280-M06] - Analysis of monoclonal antibody to GOLM1 on HeLa cell. Antibody concentration 10 ug/ml



Immunohistochemistry-Paraffin: GOLM1 Antibody (5B10) [H00051280-M06] - Analysis of monoclonal antibody to GOLM1 on formalin-fixed paraffin-embedded human endometrium. Antibody concentration 3 ug/ml



ELISA: GOLM1 Antibody (5B10) [H00051280-M06] - Detection limit for recombinant GST tagged GOLPH2 is approximately 0.1ng/ml as a capture antibody.



Publications

Liewen H, Markuly N, Laubli H et al. Therapeutic Targeting of Golgi Phosphoprotein 2 (GOLPH2) with Armed Antibodies: A Preclinical Study of Anti-GOLPH2 Antibody Drug Conjugates in Lung and Colorectal Cancer Models of Patient Derived Xenografts (PDX). *Target Oncol.* 2019-10-15 [PMID: 31541350]

Hirst J, Itzhak D, Antrobus R et al. Role of the AP-5 adaptor protein complex in late endosome-to-Golgi retrieval. *PLoS Biol.* 2018-01-15 [PMID: 29381698]

Wei S, Dunn TA, Isaacs WB et al. GOLPH2 and MYO6: putative prostate cancer markers localized to the Golgi apparatus. *Prostate.* 2008-09-15 [PMID: 18543251]

Kristiansen G, Fritzsche FR, Wassermann K et al. GOLPH2 protein expression as a novel tissue biomarker for prostate cancer: implications for tissue-based diagnostics. *Br J Cancer.* 2008-09-16 [PMID: 18781151]

Scheble VJ, Braun M, Wilbertz T et al. ERG rearrangement in small cell prostatic and lung cancer. *Histopathology.* 2010-01-10 [PMID: 20636794]

Braun M, Menon R, Nikolov P et al. The HOPE fixation technique - a promising alternative to common prostate cancer biobanking approaches. *BMC Cancer.* 2011-12-07 [PMID: 22151117]



**Novus Biologicals USA**

10730 E. Briarwood Avenue
Centennial, CO 80112
USA
Phone: 303.730.1950
Toll Free: 1.888.506.6887
Fax: 303.730.1966
nb-customerservice@bio-techne.com

Bio-Techne Canada

21 Canmotor Ave
Toronto, ON M8Z 4E6
Canada
Phone: 905.827.6400
Toll Free: 855.668.8722
Fax: 905.827.6402
canada.inquires@bio-techne.com

Bio-Techne Ltd

19 Barton Lane
Abingdon Science Park
Abingdon, OX14 3NB, United Kingdom
Phone: (44) (0) 1235 529449
Free Phone: 0800 37 34 15
Fax: (44) (0) 1235 533420
info.EMEA@bio-techne.com

General Contact Information

www.novusbio.com
Technical Support: nb-technical@bio-techne.com
Orders: nb-customerservice@bio-techne.com
General: novus@novusbio.com

Products Related to H00051280-M06-100ug

| | |
|------------------|---|
| HAF007 | Goat anti-Mouse IgG Secondary Antibody [HRP] |
| NB720-B | Rabbit anti-Mouse IgG (H+L) Secondary Antibody [Biotin] |
| NBP1-43319-0.5mg | Mouse IgG1 Kappa Isotype Control (P3.6.2.8.1) |
| NBP2-23084 | Recombinant Human GOLM1 His Protein |

Limitations

This product is for research use only and is not approved for use in humans or in clinical diagnosis. Primary Antibodies are guaranteed for 1 year from date of receipt.

For more information on our 100% guarantee, please visit www.novusbio.com/guarantee

Earn gift cards/discounts by submitting a review: www.novusbio.com/reviews/submit/H00051280-M06

Earn gift cards/discounts by submitting a publication using this product:
www.novusbio.com/publications

