

# Product Datasheet

## LEF1 Antibody (3H5) - Azide and BSA Free H00051176-M01

Unit Size: 0.1 mg

Aliquot and store at -20C or -80C. Avoid freeze-thaw cycles.

[www.novusbio.com](http://www.novusbio.com)



[technical@novusbio.com](mailto:technical@novusbio.com)

### Publications: 3

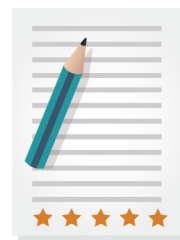
Protocols, Publications, Related Products, Reviews, Research Tools and Images at:  
[www.novusbio.com/H00051176-M01](http://www.novusbio.com/H00051176-M01)

Updated 2/21/2025 v.20.1

Earn rewards for product  
reviews and publications.

Submit a publication at [www.novusbio.com/publications](http://www.novusbio.com/publications)

Submit a review at [www.novusbio.com/reviews/destination/H00051176-M01](http://www.novusbio.com/reviews/destination/H00051176-M01)



**H00051176-M01**

LEF1 Antibody (3H5) - Azide and BSA Free

Product Information	
Unit Size	0.1 mg
Concentration	Concentrations vary lot to lot. See vial label for concentration. If unlisted please contact technical services.
Storage	Aliquot and store at -20C or -80C. Avoid freeze-thaw cycles.
Clonality	Monoclonal
Clone	3H5
Preservative	No Preservative
Isotype	IgG1 Kappa
Purity	IgG purified
Buffer	In 1x PBS, pH 7.4

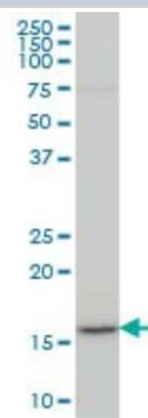
Product Description	
Host	Mouse
Gene ID	51176
Gene Symbol	LEF1
Species	Human, Mouse
Reactivity Notes	Human. Other species not tested.
Specificity/Sensitivity	LEF1 - lymphoid enhancer-binding factor 1
Immunogen	LEF1 (AAH50632, 1 a.a. ~ 399 a.a) full-length recombinant protein with GST tag. MW of the GST tag alone is 26 KDa. MPQLSGGGGGGGDPELCATDEMIPFKDEGDPQKEKIFAEISHPEEEGDLADI KSSLVNESEIIPASNGHEVARQAQTSQEPYHDKAREHPDDGKHPDGGGLYNGK PSYSSYSGYIMMPNMNNDPYMSNGSLSPPIPRTSNKVPVQPSHAVHPLTPLI TYSDEHFSPGSHPSHIPSDVNSKQGMSRHPPAPDIPTFYPLSPGGVGGQITPPL GWQQQPVPYPITGGFRQPYPSSLSVDTSMSRFSHHMIPGPPGPHTTGIPHPAIV TPQVKQEHPHTDSDLMHVKPQHEQRKEQEPKRPHIKKPLNAFMLYMKEMRAN VVAECTLKESAAINQILGRRWHALSREEQAKYYELARKERQLHMQLYPGWSAR DNYGKKKKRKREKLQESASGTGPRMTAAYI
Notes	This product is produced by and distributed for Abnova, a company based in Taiwan.

Product Application Details	
Applications	Western Blot, ELISA, Immunocytochemistry/ Immunofluorescence, Proximity Ligation Assay, Sandwich ELISA, Knockdown Validated
Recommended Dilutions	Western Blot 1:500, ELISA, Immunocytochemistry/ Immunofluorescence, Proximity Ligation Assay, Sandwich ELISA, Knockdown Validated
Application Notes	Antibody reactive against cell lysate and recombinant protein for western blot. It has also been used for RNAi validation and ELISA.

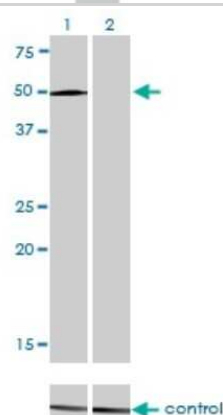


## Images

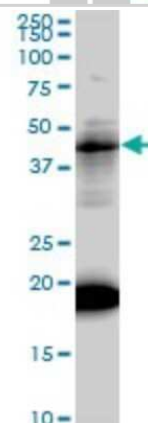
Western Blot: LEF1 Antibody (3H5) [H00051176-M01] - LEF1 monoclonal antibody (M01), clone 3H5 Analysis of LEF1 expression in MES-SA/Dx5.



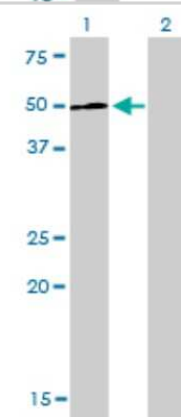
Western Blot: LEF1 Antibody (3H5) [H00051176-M01] - Analysis of LEF1 over-expressed 293 cell line, cotransfected with LEF1 Validated Chimera RNAi ( Cat # H00051176-R01V ) (Lane 2) or non-transfected control (Lane 1). Blot probed with LEF1 monoclonal antibody (M01), clone 3H5 (Cat # H00051176-M01 ). GAPDH ( 36.1 kDa ) used as specificity and loading control.



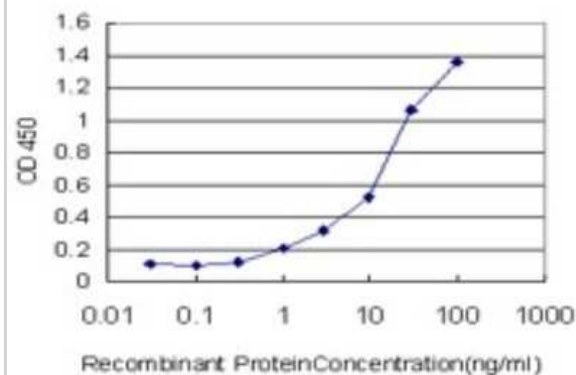
Western Blot: LEF1 Antibody (3H5) [H00051176-M01] - LEF1 monoclonal antibody (M01), clone 3H5. Analysis of LEF1 expression in HL-60.



Western Blot: LEF1 Antibody (3H5) [H00051176-M01] - Analysis of LEF1 expression in transfected 293T cell line by LEF1 monoclonal antibody (M01), clone 3H5. Lane 1: LEF1 transfected lysate(44.2 KDa). Lane 2: Non-transfected lysate.



Sandwich ELISA: LEF1 Antibody (3H5) [H00051176-M01] - Detection limit for recombinant GST tagged LEF1 is approximately 0.3ng/ml as a capture antibody.



## Publications

Jamieson C, Sharma M, Henderson BR. Regulation of b-catenin nuclear dynamics by GSK-3b involves a LEF-1 positive feedback loop. *Traffic*. 2011-04-15 [PMID: 21496192]

Jamieson C, Lui C, Brocardo MG et al. Rac1 augments Wnt signaling by stimulating b-catenin-LEF-1 complex assembly independent of b-catenin nuclear import. *J Cell Sci*. 2015-09-24 [PMID: 26403202]

Hebenstreit D, Giaisi M, Treiber MK et al. LEF-1 negatively controls interleukin-4 expression through a proximal promoter regulatory element. *J Biol Chem*;283(33):22490-7. 2008-08-15 [PMID: 18579517]



### Novus Biologicals USA

10730 E. Briarwood Avenue  
Centennial, CO 80112  
USA  
Phone: 303.730.1950  
Toll Free: 1.888.506.6887  
Fax: 303.730.1966  
nb-customerservice@bio-techne.com

### Bio-Techne Canada

21 Canmotor Ave  
Toronto, ON M8Z 4E6  
Canada  
Phone: 905.827.6400  
Toll Free: 855.668.8722  
Fax: 905.827.6402  
canada.inquires@bio-techne.com

### Bio-Techne Ltd

19 Barton Lane  
Abingdon Science Park  
Abingdon, OX14 3NB, United Kingdom  
Phone: (44) (0) 1235 529449  
Free Phone: 0800 37 34 15  
Fax: (44) (0) 1235 533420  
info.EMEA@bio-techne.com

### General Contact Information

www.novusbio.com  
Technical Support: nb-technical@bio-techne.com  
Orders: nb-customerservice@bio-techne.com  
General: novus@novusbio.com

### Products Related to H00051176-M01

---

HAF007	Goat anti-Mouse IgG Secondary Antibody [HRP]
NB720-B	Rabbit anti-Mouse IgG (H+L) Secondary Antibody [Biotin]
NBP1-43319-0.5mg	Mouse IgG1 Kappa Isotype Control (P3.6.2.8.1)
H00051176-P01-10ug	Recombinant Human LEF1 GST (N-Term) Protein

---

### Limitations

This product is for research use only and is not approved for use in humans or in clinical diagnosis. Primary Antibodies are guaranteed for 1 year from date of receipt.

For more information on our 100% guarantee, please visit [www.novusbio.com/guarantee](http://www.novusbio.com/guarantee)

Earn gift cards/discounts by submitting a review: [www.novusbio.com/reviews/submit/H00051176-M01](http://www.novusbio.com/reviews/submit/H00051176-M01)

Earn gift cards/discounts by submitting a publication using this product:  
[www.novusbio.com/publications](http://www.novusbio.com/publications)

