

Product Datasheet

RTDR1 Antibody (3B6) - Azide and BSA Free H00027156-M02

Unit Size: 0.1 mg

Aliquot and store at -20C or -80C. Avoid freeze-thaw cycles.

www.novusbio.com



technical@novusbio.com

Protocols, Publications, Related Products, Reviews, Research Tools and Images at:
www.novusbio.com/H00027156-M02

Updated 9/9/2025 v.20.1

Earn rewards for product
reviews and publications.

Submit a publication at www.novusbio.com/publications

Submit a review at www.novusbio.com/reviews/destination/H00027156-M02



H00027156-M02

RTDR1 Antibody (3B6) - Azide and BSA Free

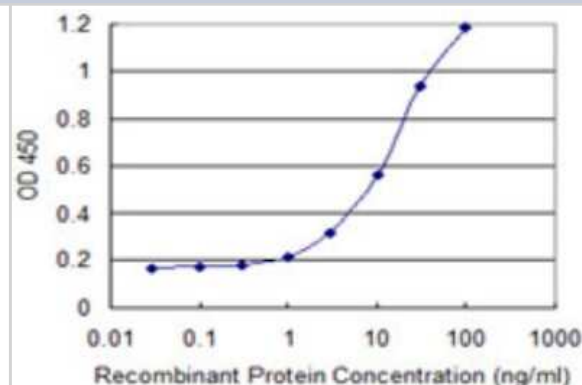
| Product Information | |
|---------------------|--|
| Unit Size | 0.1 mg |
| Concentration | Concentrations vary lot to lot. See vial label for concentration. If unlisted please contact technical services. |
| Storage | Aliquot and store at -20C or -80C. Avoid freeze-thaw cycles. |
| Clonality | Monoclonal |
| Clone | 3B6 |
| Preservative | No Preservative |
| Isotype | IgG2a Kappa |
| Purity | IgG purified |
| Buffer | In 1x PBS, pH 7.4 |

| Product Description | |
|-------------------------|---|
| Description | Novus Biologicals Mouse RTDR1 Antibody (3B6) - Azide and BSA Free (H00027156-M02) is a monoclonal antibody validated for use in ELISA. All Novus Biologicals antibodies are covered by our 100% guarantee. |
| Host | Mouse |
| Gene ID | 27156 |
| Gene Symbol | RSPH14 |
| Species | Human |
| Specificity/Sensitivity | RTDR1 - rhabdoid tumor deletion region gene 1 (3B6) |
| Immunogen | RTDR1 (NP_055248.1, 249 a.a. ~ 348 a.a) partial recombinant protein with GST tag. MW of the GST tag alone is 26 KDa. SNAAGALMFATVITEGKYAALEAQAIGLLLELLHSPMTIARLNATKALTMLAEAP EGRKALQTHVPTFRAMEVETYEKQPQVAEALQRAARIAISVIEFKP |
| Notes | This product is produced by and distributed for Abnova, a company based in Taiwan. |

| Product Application Details | |
|-----------------------------|-----------------------------------|
| Applications | ELISA, Sandwich ELISA |
| Recommended Dilutions | ELISA, Sandwich ELISA |
| Application Notes | This product is useful for ELISA. |

Images

Sandwich ELISA: RTDR1 Antibody (3B6) [H00027156-M02] - Detection limit for recombinant GST tagged RTDR1 is 0.3 ng/ml as a capture antibody.





Novus Biologicals USA

10730 E. Briarwood Avenue
Centennial, CO 80112
USA

Phone: 303.730.1950

Toll Free: 1.888.506.6887

Fax: 303.730.1966

nb-customerservice@bio-techne.com

Bio-Techne Canada

21 Canmotor Ave
Toronto, ON M8Z 4E6
Canada

Phone: 905.827.6400

Toll Free: 855.668.8722

Fax: 905.827.6402

canada.inquires@bio-techne.com

Bio-Techne Ltd

19 Barton Lane
Abingdon Science Park
Abingdon, OX14 3NB, United Kingdom

Phone: (44) (0) 1235 529449

Free Phone: 0800 37 34 15

Fax: (44) (0) 1235 533420

info.EMEA@bio-techne.com

General Contact Information

www.novusbio.com

Technical Support: nb-technical@bio-techne.com

Orders: nb-customerservice@bio-techne.com

General: novus@novusbio.com

Products Related to H00027156-M02

| | |
|--------------------|--|
| HAF007 | Goat anti-Mouse IgG Secondary Antibody [HRP] |
| NB7539 | Goat anti-Mouse IgG (H+L) Secondary Antibody [HRP] |
| NBP1-96981-0.5mg | Mouse IgG2a Kappa Isotype Control (M2AK) |
| H00027156-P01-10ug | Recombinant Human RTDR1 GST (N-Term) Protein |

Limitations

This product is for research use only and is not approved for use in humans or in clinical diagnosis. Primary Antibodies are guaranteed for 1 year from date of receipt.

For more information on our 100% guarantee, please visit www.novusbio.com/guarantee

Earn gift cards/discounts by submitting a review: www.novusbio.com/reviews/submit/H00027156-M02

Earn gift cards/discounts by submitting a publication using this product:
www.novusbio.com/publications

