

# Product Datasheet

## Siglec-7/CD328 Antibody (3H1) H00027036-M01

Unit Size: 0.1 mg

Aliquot and store at -20C or -80C. Avoid freeze-thaw cycles.

[www.novusbio.com](http://www.novusbio.com)



[technical@novusbio.com](mailto:technical@novusbio.com)

Protocols, Publications, Related Products, Reviews, Research Tools and Images at:  
[www.novusbio.com/H00027036-M01](http://www.novusbio.com/H00027036-M01)

Updated 10/24/2024 v.20.1

Earn rewards for product  
reviews and publications.

Submit a publication at [www.novusbio.com/publications](http://www.novusbio.com/publications)

Submit a review at [www.novusbio.com/reviews/destination/H00027036-M01](http://www.novusbio.com/reviews/destination/H00027036-M01)



**H00027036-M01**

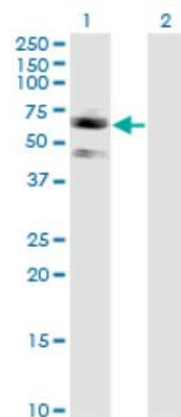
Siglec-7/CD328 Antibody (3H1)

Product Information	
Unit Size	0.1 mg
Concentration	Concentrations vary lot to lot. See vial label for concentration. If unlisted please contact technical services.
Storage	Aliquot and store at -20C or -80C. Avoid freeze-thaw cycles.
Clonality	Monoclonal
Clone	3H1
Preservative	No Preservative
Isotype	IgG2a Kappa
Purity	IgG purified
Buffer	In 1x PBS, pH 7.4
Product Description	
Host	Mouse
Gene ID	27036
Gene Symbol	SIGLEC7
Species	Human
Specificity/Sensitivity	SIGLEC7 - sialic acid binding Ig-like lectin 7 (3H1)
Immunogen	SIGLEC7 (AAH28150, 1 a.a. ~ 467 a.a) full-length recombinant protein with GST tag. MW of the GST tag alone is 26 KDa. MLLLLLLPLLWGRERVEGQKSNRKDYSLTMQSSVTVQEGMCMVHVRCSFSYPV DSQTDSDPVHGYWFRAGNDISWKAPVATNNPAWAVQEETDRDRFHLLGDPQT KNCTLSIRDARMSDAGRYFFRMEKGNIKWNYKYDQLSVNVTALTHRPNILIPGT LESGCFQNLTCVWPWACEQGTPPMISWMGTSVSPLHPSTTRSSVLTLPQPQH HGTSLTQCQVTLPGAGVTTNRTIQLNVSYPQNLTVTVFQEGGTASTALGNSS LSVLEGQSLRLVCAVDSNPPARLSWTWRSLTLYPSQPSNPLVLELQVHLGDEG EFTCRAQNSLGSQHVS LNLSLQQEYTGKMRPVSGVLLGAVGGAGATALVFLS FCVIFIVRSCRKKSARPAADVGDIGMKDANTIRGSASQGNLTESWADDNPRH HGLAAHSSGEEREIQYAPLSFHKGEPQDLGQEQEATNNEYSEIKIPK
Notes	This product is produced by and distributed for Abnova, a company based in Taiwan.
Product Application Details	
Applications	Western Blot, ELISA
Recommended Dilutions	Western Blot 1:500, ELISA
Application Notes	Antibody Reactive Against Recombinant Protein with GST tag on ELISA and Western Blot. GST tag alone is used as a negative control.



**Images**

Western Blot: Siglec-7/CD328 Antibody (3H1) [H00027036-M01] - Analysis of SIGLEC7 expression in transfected 293T cell line by SIGLEC7 monoclonal antibody (M01), clone 3H1. Lane 1: SIGLEC7 transfected lysate (Predicted MW: 51.1 KDa). Lane 2: Non-transfected lysate.





### **Novus Biologicals USA**

10730 E. Briarwood Avenue  
Centennial, CO 80112  
USA  
Phone: 303.730.1950  
Toll Free: 1.888.506.6887  
Fax: 303.730.1966  
nb-customerservice@bio-techne.com

### **Bio-Techne Canada**

21 Canmotor Ave  
Toronto, ON M8Z 4E6  
Canada  
Phone: 905.827.6400  
Toll Free: 855.668.8722  
Fax: 905.827.6402  
canada.inquires@bio-techne.com

### **Bio-Techne Ltd**

19 Barton Lane  
Abingdon Science Park  
Abingdon, OX14 3NB, United Kingdom  
Phone: (44) (0) 1235 529449  
Free Phone: 0800 37 34 15  
Fax: (44) (0) 1235 533420  
info.EMEA@bio-techne.com

### **General Contact Information**

www.novusbio.com  
Technical Support: nb-technical@bio-techne.com  
Orders: nb-customerservice@bio-techne.com  
General: novus@novusbio.com

### **Limitations**

This product is for research use only and is not approved for use in humans or in clinical diagnosis. Primary Antibodies are guaranteed for 1 year from date of receipt.

For more information on our 100% guarantee, please visit [www.novusbio.com/guarantee](http://www.novusbio.com/guarantee)

Earn gift cards/discounts by submitting a review: [www.novusbio.com/reviews/submit/H00027036-M01](http://www.novusbio.com/reviews/submit/H00027036-M01)

Earn gift cards/discounts by submitting a publication using this product:  
[www.novusbio.com/publications](http://www.novusbio.com/publications)

