

Product Datasheet

RAB31 Antibody (1C6) - Azide and BSA Free H00011031-M01

Unit Size: 0.1 mg

Aliquot and store at -20C or -80C. Avoid freeze-thaw cycles.

www.novusbio.com



technical@novusbio.com

Publications: 3

Protocols, Publications, Related Products, Reviews, Research Tools and Images at:
www.novusbio.com/H00011031-M01

Updated 9/9/2025 v.20.1

Earn rewards for product
reviews and publications.

Submit a publication at www.novusbio.com/publications

Submit a review at www.novusbio.com/reviews/destination/H00011031-M01

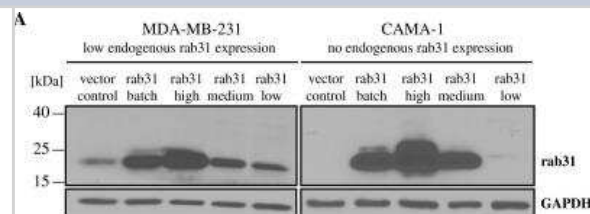


H00011031-M01**RAB31 Antibody (1C6) - Azide and BSA Free**

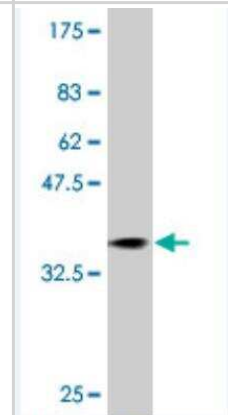
Product Information	
Unit Size	0.1 mg
Concentration	Concentrations vary lot to lot. See vial label for concentration. If unlisted please contact technical services.
Storage	Aliquot and store at -20C or -80C. Avoid freeze-thaw cycles.
Clonality	Monoclonal
Clone	1C6
Preservative	No Preservative
Isotype	IgG2a Kappa
Purity	IgG purified
Buffer	In 1x PBS, pH 7.4
Product Description	
Description	Novus Biologicals Mouse RAB31 Antibody (1C6) - Azide and BSA Free (H00011031-M01) is a monoclonal antibody validated for use in WB and ELISA. Anti-RAB31 Antibody: Cited in 3 publications. All Novus Biologicals antibodies are covered by our 100% guarantee.
Host	Mouse
Gene ID	11031
Gene Symbol	RAB31
Species	Human, Mouse
Specificity/Sensitivity	RAB31 - RAB31, member RAS oncogene family
Immunogen	RAB31 (AAH01148, 96 a.a. ~ 195 a.a) partial recombinant protein with GST tag. MW of the GST tag alone is 26 KDa. TLKKWVKELKEHGPENIVMAIAGNKCDLSDIREVPLKDAKEYAESIGAIIVVETSA KNAINIEELFQGISRQIPPLDPHENGNGTIKVEKPTMQASRRCC
Notes	This product is produced by and distributed for Abnova, a company based in Taiwan.
Product Application Details	
Applications	Western Blot, ELISA
Recommended Dilutions	Western Blot 1:500, ELISA
Application Notes	Antibody Reactive against Recombinant Protein with GST tag on ELISA and Western Blot. GST tag alone is used as a negative control.

Images

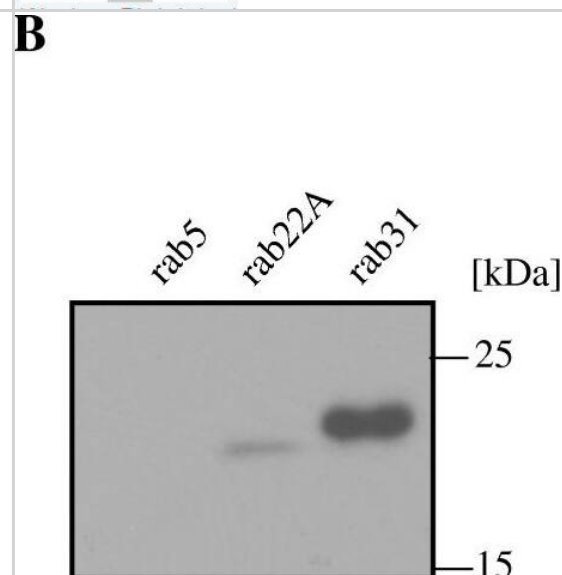
Western Blot: RAB31 Antibody (1C6) [H00011031-M01] - Rab31 expression levels in stably transfected breast cancer cells. pAb RT3-IgG specifically detects rab31 in cell lysates from stably transfected MDA-MB-231 and CAMA-1 breast cancer cells in Western blot analyses. Vector control, MDA-MB-231, or CAMA-1 cells were stably transfected with the empty vector pRcRSV; batch, parental MDA-MB-231 (low endogenous rab31 expression) or CAMA-1 (no endogenous rab31 expression) cells were stably transfected with the pRcRSV-based rab31 expression vector; high, medium or low, selected cell clones of batch-transfected MDA-MB-231 or CAMA-1 cells with differing high, medium or low protein levels of rab31. Image collected and cropped by CiteAb from the following publication ([molecular-cancer.biomedcentral.com/articles/10.1186/1476-4598-11-62](https://doi.org/10.1186/1476-4598-11-62)), licensed under a CC-BY license.



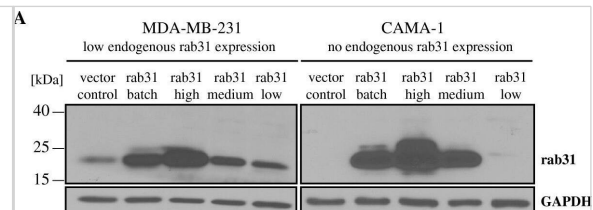
Western Blot: RAB31 Antibody (1C6) [H00011031-M01] - Western Blot detection against Immunogen (36.63 kDa) .



Western Blot: RAB31 Antibody (1C6) [H00011031-M01] - Characterization of polyclonal antibodies directed to human rab31. (A) The reaction pattern of polyclonal antibody (pAb) RT3-IgG (black) & of the pre-immune rabbit serum (gray) was analyzed by a 'one-sided ELISA' assay [19]. rab31-His, purified recombinant, histidine-tagged rab31, used for immunization; GST-rab31, purified recombinant GST-rab31 fusion protein; BSA, bovine serum albumin. (B) In Western blot analyses, pAb RT3-IgG strongly reacts with recombinant rab31 & not at all or only weakly with the highly homologous Rab proteins rab5 & rab22A, respectively. (C) Immunohistochemical staining of paraffin-embedded, formalin-fixed breast cancer specimens with pAb RT4-IgG. Specific immunostaining is observed in the cytoplasm as well as in the nucleus of cancer cells (upper panel, see arrow), stromal cells are stained less frequently (lower panel, see arrow). Image collected & cropped by CiteAb from the following publication (<https://pubmed.ncbi.nlm.nih.gov/22920728>), licensed under a CC-BY license. Not internally tested by Novus Biologicals.



Western Blot: RAB31 Antibody (1C6) [H00011031-M01] - Rab31 expression levels in stably transfected breast cancer cells. (A) pAb RT3-IgG specifically detects rab31 in cell lysates from stably transfected MDA-MB-231 & CAMA-1 breast cancer cells in Western blot analyses. Vector control, MDA-MB-231, or CAMA-1 cells were stably transfected with the empty vector pRcRSV; batch, parental MDA-MB-231 (low endogenous rab31 expression) or CAMA-1 (no endogenous rab31 expression) cells were stably transfected with the pRcRSV-based rab31 expression vector; high, medium or low, selected cell clones of batch-transfected MDA-MB-231 or CAMA-1 cells with differing high, medium or low protein levels of rab31. (B) Rab31 antigen values (ng/mg of total protein) in rab31-transfected MDA-MB-231 & CAMA-1 cells, determined by rab31-ELISA. Mean values (\pm SEM) of at least three independent experiments are depicted. Image collected & cropped by CiteAb from the following publication (<https://pubmed.ncbi.nlm.nih.gov/22920728>), licensed under a CC-BY license. Not internally tested by Novus Biologicals.



Publications

Fukuda M Rab10 regulates tubular endosome formation through KIF13A/B motors. *J Cell Sci.* 2019-02-19 [PMID: 30700496] (WB, Human)

Grismayer B, Soelch S, Seubert B et al. Rab31 expression levels modulate tumor-relevant characteristics of breast cancer cells *Mol Cancer* 2012-08-24 [PMID: 22920728] (ELISA, Human)

Lodhi IJ, Chiang SH, Chang L et al. Gapex-5, a Rab31 Guanine Nucleotide Exchange Factor that Regulates Glut4 Trafficking in Adipocytes. *Cell Metab*;5(1):59-72. 2007-01-01 [PMID: 17189207]



Novus Biologicals USA

10730 E. Briarwood Avenue
Centennial, CO 80112
USA
Phone: 303.730.1950
Toll Free: 1.888.506.6887
Fax: 303.730.1966
nb-customerservice@bio-techne.com

Bio-Techne Canada

21 Canmotor Ave
Toronto, ON M8Z 4E6
Canada
Phone: 905.827.6400
Toll Free: 855.668.8722
Fax: 905.827.6402
canada.inquires@bio-techne.com

Bio-Techne Ltd

19 Barton Lane
Abingdon Science Park
Abingdon, OX14 3NB, United Kingdom
Phone: (44) (0) 1235 529449
Free Phone: 0800 37 34 15
Fax: (44) (0) 1235 533420
info.EMEA@bio-techne.com

General Contact Information

www.novusbio.com
Technical Support: nb-technical@bio-techne.com
Orders: nb-customerservice@bio-techne.com
General: novus@novusbio.com

Products Related to H00011031-M01

NBP2-33376H	Blue Marker Antibody (6F4-F6) [HRP]
HAF007	Goat anti-Mouse IgG Secondary Antibody [HRP]
NB7539	Goat anti-Mouse IgG (H+L) Secondary Antibody [HRP]
NBP1-96981-0.5mg	Mouse IgG2a Kappa Isotype Control (M2AK)

Limitations

This product is for research use only and is not approved for use in humans or in clinical diagnosis. Primary Antibodies are guaranteed for 1 year from date of receipt.

For more information on our 100% guarantee, please visit www.novusbio.com/guarantee

Earn gift cards/discounts by submitting a review: www.novusbio.com/reviews/submit/H00011031-M01

Earn gift cards/discounts by submitting a publication using this product:
www.novusbio.com/publications

