

Product Datasheet

RALBP1 Antibody (2A1) - Azide and BSA Free H00010928-M02

Unit Size: 0.1 mg

Aliquot and store at -20C or -80C. Avoid freeze-thaw cycles.

www.novusbio.com



technical@novusbio.com

Publications: 9

Protocols, Publications, Related Products, Reviews, Research Tools and Images at:
www.novusbio.com/H00010928-M02

Updated 9/9/2025 v.20.1

Earn rewards for product
reviews and publications.

Submit a publication at www.novusbio.com/publications

Submit a review at www.novusbio.com/reviews/destination/H00010928-M02



H00010928-M02

RALBP1 Antibody (2A1) - Azide and BSA Free

Product Information	
Unit Size	0.1 mg
Concentration	Concentrations vary lot to lot. See vial label for concentration. If unlisted please contact technical services.
Storage	Aliquot and store at -20C or -80C. Avoid freeze-thaw cycles.
Clonality	Monoclonal
Clone	2A1
Preservative	No Preservative
Isotype	IgG2b Kappa
Purity	IgG purified
Buffer	In 1x PBS, pH 7.4

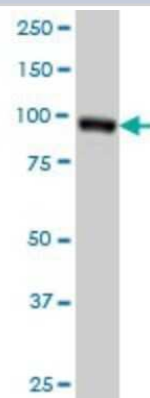
Product Description	
Description	Novus Biologicals Mouse RALBP1 Antibody (2A1) - Azide and BSA Free (H00010928-M02) is a monoclonal antibody validated for use in WB, ELISA, ICC/IF and IP. Anti-RALBP1 Antibody: Cited in 9 publications. All Novus Biologicals antibodies are covered by our 100% guarantee.
Host	Mouse
Gene ID	10928
Gene Symbol	RALBP1
Species	Human, Xenopus
Specificity/Sensitivity	RALBP1 - ralA binding protein 1
Immunogen	RALBP1 (AAH13126.1, 1 a.a. ~ 655 a.a) full-length recombinant protein with GST tag. MW of the GST tag alone is 26 KDa. MTECFLPPTSSPSEHRRVEHGSGLTRTPSSEEISPTKFPGLYRTGEPSPPHDIL HEPPDVVSDDEKDHGKKKGKFKKKEKRTEGYAAFQEDSSGDEAESPSKMKRS KGIHVFKKPSFSKKKEKDFKIKEKPKKEKHKEEKHKEEKHKEKSKDLTAADV KQWKEKKKKKKPIQEPEVPQIDVPLNKPIFGIPLADAVERTMMYDGIPLPAVFRE CIDYVEKYGMKCEGIYRVSGIKSKVDELKAAYDREESTNLEDYEPNTVASLLKQ YLRDLPENLLTKELMPRFEEACGRRTTETEKVQEFQRLLKELPECNYLLISWLIVH MDHVIAKELETMNIQNISIVLSPTVQISNRVLYVFFTHVQELFGNVVLKQVMKP LRWSNMATMPTLPETQAGIKEEIRRQEFLLNCLHRDLQGGIKDLSKEERLWEV QRILTALKRKLREAKRQECETKIAQEIASLSKEDVSKEEMNENEVINILLAQENE ILTEQEELLAMEQFLRRQIASEKEEIERLRAEIAEIQSRQQHGRSETEEYSSESE SESEDEEELQILEDLQRQNEELEIKNNHLNQAHEEREAIHELVRVQLRLLQMORA KAEQQAQEDEEPEWRGGAVQPPRDGVLEPKAAREQPKAGKEPAKPSPSRDR KETSI
Notes	This product is produced by and distributed for Abnova, a company based in Taiwan.

Product Application Details	
Applications	Western Blot, ELISA, Immunocytochemistry/ Immunofluorescence, Immunoprecipitation
Recommended Dilutions	Western Blot 1:500, ELISA 1:100-1:2000, Immunocytochemistry/ Immunofluorescence, Immunoprecipitation 1:10-1:1000
Application Notes	Antibody reactive against cell lysate and recombinant protein for western blot. It has also been used for ELISA.



Images

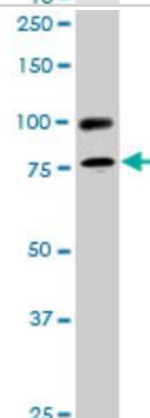
Western Blot: RALBP1 Antibody (2A1) [H00010928-M02] - RALBP1 monoclonal antibody (M02), clone 2A1 Analysis of RALBP1 expression in HeLa.



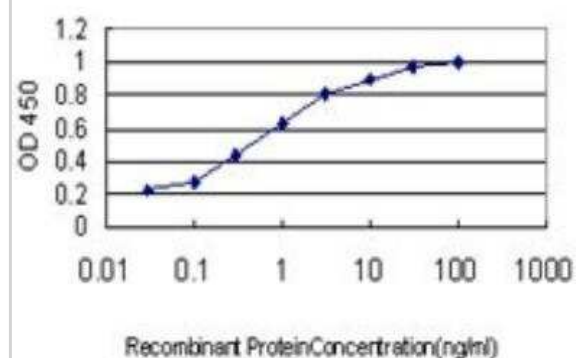
Western Blot: RALBP1 Antibody (2A1) [H00010928-M02] - Analysis of RALBP1 transfected lysate using anti-RALBP1 monoclonal antibody and Protein A Magnetic Bead, and immunoblotted with RALBP1 MaxPab rabbit polyclonal antibody.



Western Blot: RALBP1 Antibody (2A1) [H00010928-M02] - RALBP1 monoclonal antibody (M02), clone 2A1. Analysis of RALBP1 expression in C32.



ELISA: RALBP1 Antibody (2A1) [H00010928-M02] - Detection limit for recombinant GST tagged RALBP1 is approximately 0.03ng/ml as a capture antibody.



Publications

Majstrowicz K, Honnert U, Nikolaus P et al. Coordination of mitochondrial and cellular dynamics by the actin-based motor Myo19 *Journal of cell science* 2021-05-15 [PMID: 34013964]

M Kobayashi, H Katayama, E Irajizad, JV Vykoukal, JF Fahrman, DL Kundnani, CY Yu, Y Cai, FC Hsiao, WL Yang, Z Lu, J Celestino, JP Long, KA Do, KH Lu, JJ Ladd, N Urban, RC Bast, SM Hanash Proteome Profiling Uncovers an Autoimmune Response Signature That Reflects Ovarian Cancer Pathogenesis *Cancers (Basel)*, 2020-02-19;12(2):. 2020-02-19 [PMID: 32092936]

Fillatre J, Delacour D, Van Hove L et al. Dynamics of the subcellular localization of RalBP1/RLIP through the cell cycle: the role of targeting signals and of protein-protein interactions. *FASEB J.* 2012-02-08 [PMID: 22319010]

Neel NF, Rossman KL, Martin TD et al. The RalB Small GTPase Mediates Invadopodia Formation Through a GTPase Activating Protein-independent Function of the RalBP1/RLIP76 Effector. *Mol Cell Biol.* 2012-02-13 [PMID: 22331470]

Tazat K, Harsat M, Goldshmid-Shagal A et al. Dual effects of Ral-activated pathways on p27 localization and TGF- β signaling. *Mol Biol Cell.* 2013-04-10 [PMID: 23576547]

Kashatus DF, Lim K-H, Brady DC et al. RALA and RALBP1 regulate mitochondrial fission at mitosis. *Nat Cell Biol.* 2011-08-07 [PMID: 21822277]

Kidd AR 3rd, Snider JL, Martin TD et al. Ras-Related Small GTPases RalA and RalB Regulate Cellular Survival After Ionizing Radiation. *Int J Radiat Oncol Biol Phys.* 2010-07-07 [PMID: 20619549]

Smith SC, Oxford G, Baras AS et al. Expression of Ral GTPases, Their Effectors, Activators in Human Bladder Cancer. *Clin Cancer Res*;13(13):3803-13. 2007-07-01 [PMID: 17606711]

Herlevsen MC, Theodorescu D. Mass spectroscopic phosphoprotein mapping of Ral binding protein 1 (RalBP1/Rip1/RLIP76). *Biochem Biophys Res Commun*;362(1):56-62. 2007-10-12 [PMID: 17706599]





Novus Biologicals USA

10730 E. Briarwood Avenue
Centennial, CO 80112
USA
Phone: 303.730.1950
Toll Free: 1.888.506.6887
Fax: 303.730.1966
nb-customerservice@bio-techne.com

Bio-Techne Canada

21 Canmotor Ave
Toronto, ON M8Z 4E6
Canada
Phone: 905.827.6400
Toll Free: 855.668.8722
Fax: 905.827.6402
canada.inquires@bio-techne.com

Bio-Techne Ltd

19 Barton Lane
Abingdon Science Park
Abingdon, OX14 3NB, United Kingdom
Phone: (44) (0) 1235 529449
Free Phone: 0800 37 34 15
Fax: (44) (0) 1235 533420
info.EMEA@bio-techne.com

General Contact Information

www.novusbio.com
Technical Support: nb-technical@bio-techne.com
Orders: nb-customerservice@bio-techne.com
General: novus@novusbio.com

Products Related to H00010928-M02

NBP2-33376H	Blue Marker Antibody (6F4-F6) [HRP]
HAF007	Goat anti-Mouse IgG Secondary Antibody [HRP]
NB7539	Goat anti-Mouse IgG (H+L) Secondary Antibody [HRP]
NBP1-43317-0.5mg	Mouse IgG2b Kappa Light Chain Isotype Control (MG2b)

Limitations

This product is for research use only and is not approved for use in humans or in clinical diagnosis. Primary Antibodies are guaranteed for 1 year from date of receipt.

For more information on our 100% guarantee, please visit www.novusbio.com/guarantee

Earn gift cards/discounts by submitting a review: www.novusbio.com/reviews/submit/H00010928-M02

Earn gift cards/discounts by submitting a publication using this product:
www.novusbio.com/publications

