

Product Datasheet

CREB5 Antibody (1E2) - Azide and BSA Free H00009586-M01

Unit Size: 0.05 mg

Aliquot and store at -20C or -80C. Avoid freeze-thaw cycles.

www.novusbio.com



technical@novusbio.com

Protocols, Publications, Related Products, Reviews, Research Tools and Images at:
www.novusbio.com/H00009586-M01

Updated 2/21/2025 v.20.1

Earn rewards for product
reviews and publications.

Submit a publication at www.novusbio.com/publications

Submit a review at www.novusbio.com/reviews/destination/H00009586-M01



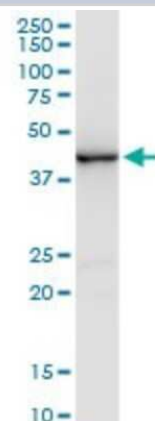
H00009586-M01

CREB5 Antibody (1E2) - Azide and BSA Free

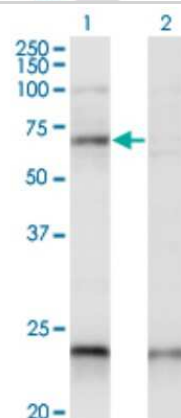
Product Information	
Unit Size	0.05 mg
Concentration	This product is unpurified. The exact concentration of antibody is not quantifiable.
Storage	Aliquot and store at -20C or -80C. Avoid freeze-thaw cycles.
Clonality	Monoclonal
Clone	1E2
Preservative	No Preservative
Isotype	IgG2a Kappa
Purity	Ascites
Buffer	In 1x PBS, pH 7.4
Product Description	
Host	Mouse
Gene ID	9586
Gene Symbol	CREB5
Species	Human
Specificity/Sensitivity	CREB5 - cAMP responsive element binding protein 5 (1E2)
Immunogen	CREB5 (NP_001011666, 1 a.a. ~ 99 a.a) partial recombinant protein with GST tag. MW of the GST tag alone is 26 KDa. MFCTSGGNSASVMSMRPVPGLSLLHLHNRQRQPMPASMPGTLNPTMPG SSAVLMPMERQMSVNSSIMGMQGPNLSNPCASPQVQPMHSEAKMRLKA
Notes	This product is produced by and distributed for Abnova, a company based in Taiwan.
Product Application Details	
Applications	Western Blot, ELISA, Immunoprecipitation
Recommended Dilutions	Western Blot 1:500, ELISA, Immunoprecipitation
Application Notes	Antibody reactive against recombinant protein with GST tag on ELISA and Western Blot. GST tag alone is used as a negative control.

Images

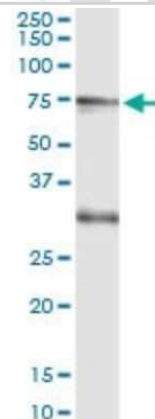
Western Blot: CREB5 Antibody (1E2) [H00009586-M01] - CREB5 monoclonal antibody (M01), clone 1E2. Analysis of CREB5 expression in human kidney.



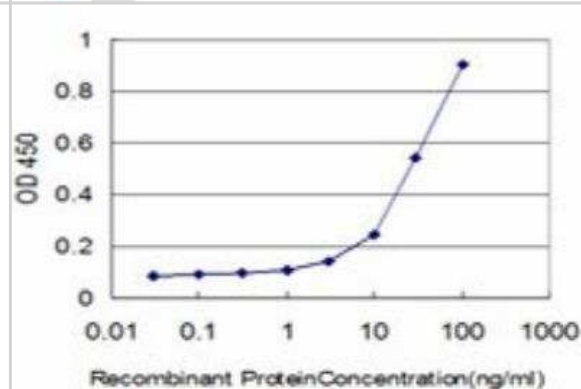
Western Blot: CREB5 Antibody (1E2) [H00009586-M01] - Analysis of CREB5 expression in transfected 293T cell line by CREB5 monoclonal antibody (M01), clone 1E2. Lane 1: CREB5 transfected lysate (Predicted MW: 56.9 KDa). Lane 2: Non-transfected lysate.



Immunoprecipitation: CREB5 Antibody (1E2) [H00009586-M01] - Analysis of CREB5 transfected lysate using anti-CREB5 monoclonal antibody and Protein A Magnetic Bead, and immunoblotted with CREB5 MaxPab rabbit polyclonal antibody.



ELISA: CREB5 Antibody (1E2) [H00009586-M01] - Detection limit for recombinant GST tagged CREB5 is approximately 3ng/ml as a capture antibody.





Novus Biologicals USA

10730 E. Briarwood Avenue
Centennial, CO 80112
USA
Phone: 303.730.1950
Toll Free: 1.888.506.6887
Fax: 303.730.1966
nb-customerservice@bio-techne.com

Bio-Techne Canada

21 Canmotor Ave
Toronto, ON M8Z 4E6
Canada
Phone: 905.827.6400
Toll Free: 855.668.8722
Fax: 905.827.6402
canada.inquires@bio-techne.com

Bio-Techne Ltd

19 Barton Lane
Abingdon Science Park
Abingdon, OX14 3NB, United Kingdom
Phone: (44) (0) 1235 529449
Free Phone: 0800 37 34 15
Fax: (44) (0) 1235 533420
info.EMEA@bio-techne.com

General Contact Information

www.novusbio.com
Technical Support: nb-technical@bio-techne.com
Orders: nb-customerservice@bio-techne.com
General: novus@novusbio.com

Products Related to H00009586-M01

HAF007	Goat anti-Mouse IgG Secondary Antibody [HRP]
NB720-B	Rabbit anti-Mouse IgG (H+L) Secondary Antibody [Biotin]
NBP1-96981-0.5mg	Mouse IgG2a Kappa Isotype Control (M2AK)
NBP2-56627PEP	CREB5 Recombinant Protein Antigen

Limitations

This product is for research use only and is not approved for use in humans or in clinical diagnosis. Primary Antibodies are guaranteed for 1 year from date of receipt.

For more information on our 100% guarantee, please visit www.novusbio.com/guarantee

Earn gift cards/discounts by submitting a review: www.novusbio.com/reviews/submit/H00009586-M01

Earn gift cards/discounts by submitting a publication using this product:
www.novusbio.com/publications

