

Product Datasheet

ARHGEF6 Antibody (2E5) - Azide and BSA Free H00009459-M02

Unit Size: 0.1 mg

Aliquot and store at -20C or -80C. Avoid freeze-thaw cycles.

www.novusbio.com



technical@novusbio.com

Publications: 1

Protocols, Publications, Related Products, Reviews, Research Tools and Images at:
www.novusbio.com/H00009459-M02

Updated 9/9/2025 v.20.1

Earn rewards for product
reviews and publications.

Submit a publication at www.novusbio.com/publications

Submit a review at www.novusbio.com/reviews/destination/H00009459-M02



H00009459-M02

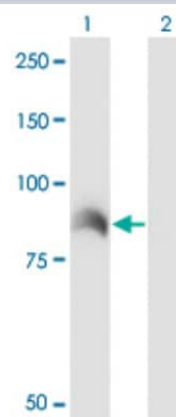
ARHGEF6 Antibody (2E5) - Azide and BSA Free

| Product Information | |
|-----------------------------|--|
| Unit Size | 0.1 mg |
| Concentration | Concentrations vary lot to lot. See vial label for concentration. If unlisted please contact technical services. |
| Storage | Aliquot and store at -20C or -80C. Avoid freeze-thaw cycles. |
| Clonality | Monoclonal |
| Clone | 2E5 |
| Preservative | No Preservative |
| Isotype | IgG2a Kappa |
| Purity | IgG purified |
| Buffer | In 1x PBS, pH 7.4 |
| Product Description | |
| Description | Novus Biologicals Mouse ARHGEF6 Antibody (2E5) - Azide and BSA Free (H00009459-M02) is a monoclonal antibody validated for use in WB, ELISA, ICC/IF and IP. Anti-ARHGEF6 Antibody: Cited in 1 publication. All Novus Biologicals antibodies are covered by our 100% guarantee. |
| Host | Mouse |
| Gene ID | 9459 |
| Gene Symbol | ARHGEF6 |
| Species | Human |
| Specificity/Sensitivity | ARHGEF6 - Rac/Cdc42 guanine nucleotide exchange factor (GEF) 6 (2E5) |
| Immunogen | ARHGEF6 (AAH39856.1, 61 a.a. ~ 175 a.a) partial recombinant protein with GST tag. MW of the GST tag alone is 26 KDa. QTEADCINNINDFLKGCATLQVEIFDPDDL YSGVNFSKVLSTLLAVNKATEDQLS ERPCGRSSSLSAANTSQTNPQGAVSSTVSGLQRQSKTVEMTENGSHQLIVKA RFNFKQTN |
| Notes | This product is produced by and distributed for Abnova, a company based in Taiwan. |
| Product Application Details | |
| Applications | Western Blot, ELISA, Immunocytochemistry/ Immunofluorescence, Immunoprecipitation, Proximity Ligation Assay, Sandwich ELISA |
| Recommended Dilutions | Western Blot 1:500, ELISA, Immunocytochemistry/ Immunofluorescence, Immunoprecipitation, Proximity Ligation Assay, Sandwich ELISA |
| Application Notes | Antibody Reactive Against Recombinant Protein with GST tag on ELISA and Western Blot. GST tag alone is used as a negative control. |

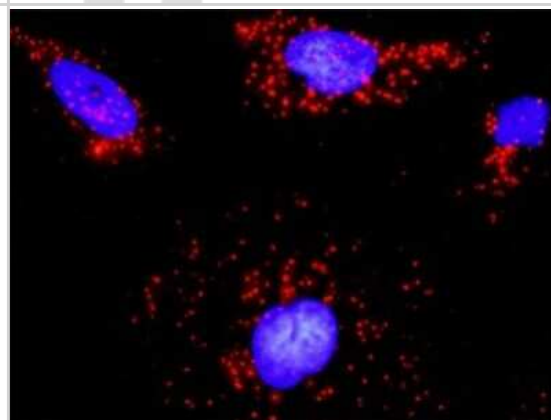


Images

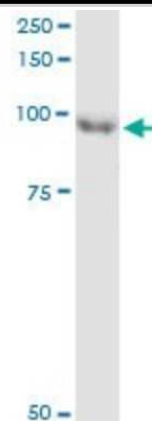
Western Blot: ARHGEF6 Antibody (2E5) [H00009459-M02] - Analysis of ARHGEF6 expression in transfected 293T cell line by ARHGEF6 monoclonal antibody (M02), clone 2E5. Lane 1: ARHGEF6 transfected lysate (Predicted MW: 87.5 KDa). Lane 2: Non-transfected lysate.



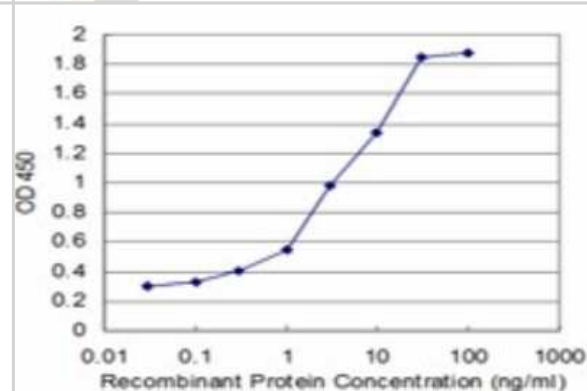
Proximity Ligation Assay: ARHGEF6 Antibody (2E5) [H00009459-M02] - Analysis of protein-protein interactions between CDC42 and ARHGEF6. HeLa cells were stained with anti-CDC42 rabbit purified polyclonal 1:1200 and anti-ARHGEF6 mouse monoclonal antibody 1:50. Each red dot represents the detection of protein-protein interaction complex, and nuclei were counterstained with DAPI (blue).



Immunoprecipitation: ARHGEF6 Antibody (2E5) [H00009459-M02] - Analysis of ARHGEF6 transfected lysate using anti-ARHGEF6 monoclonal antibody and Protein A Magnetic Bead, and immunoblotted with ARHGEF6 monoclonal antibody.



Sandwich ELISA: ARHGEF6 Antibody (2E5) [H00009459-M02] - Detection limit for recombinant GST tagged ARHGEF6 is approximately 0.03ng/ml as a capture antibody.



Publications

Mazaki Y, Onodera Y, Higashi T et al. ARF1 recruits RAC1 to leading edge in neutrophil chemotaxis. Cell Commun Signal 2017-10-02 [PMID: 28969640]



Novus Biologicals USA

10730 E. Briarwood Avenue
Centennial, CO 80112
USA
Phone: 303.730.1950
Toll Free: 1.888.506.6887
Fax: 303.730.1966
nb-customerservice@bio-techne.com

Bio-Techne Canada

21 Canmotor Ave
Toronto, ON M8Z 4E6
Canada
Phone: 905.827.6400
Toll Free: 855.668.8722
Fax: 905.827.6402
canada.inquires@bio-techne.com

Bio-Techne Ltd

19 Barton Lane
Abingdon Science Park
Abingdon, OX14 3NB, United Kingdom
Phone: (44) (0) 1235 529449
Free Phone: 0800 37 34 15
Fax: (44) (0) 1235 533420
info.EMEA@bio-techne.com

General Contact Information

www.novusbio.com
Technical Support: nb-technical@bio-techne.com
Orders: nb-customerservice@bio-techne.com
General: novus@novusbio.com

Products Related to H00009459-M02

| | |
|--------------------|---|
| HAF007 | Goat anti-Mouse IgG Secondary Antibody [HRP] |
| NB720-B | Rabbit anti-Mouse IgG (H+L) Secondary Antibody [Biotin] |
| NBP1-96981-0.5mg | Mouse IgG2a Kappa Isotype Control (M2AK) |
| H00009459-P01-10ug | Recombinant Human ARHGEF6 GST (N-Term) Protein |

Limitations

This product is for research use only and is not approved for use in humans or in clinical diagnosis. Primary Antibodies are guaranteed for 1 year from date of receipt.

For more information on our 100% guarantee, please visit www.novusbio.com/guarantee

Earn gift cards/discounts by submitting a review: www.novusbio.com/reviews/submit/H00009459-M02

Earn gift cards/discounts by submitting a publication using this product:
www.novusbio.com/publications

