

# Product Datasheet

## CRLF1 Antibody (4F4) - Azide and BSA Free H00009244-M01

Unit Size: 0.1 mg

Aliquot and store at -20C or -80C. Avoid freeze-thaw cycles.

[www.novusbio.com](http://www.novusbio.com)



[technical@novusbio.com](mailto:technical@novusbio.com)

Protocols, Publications, Related Products, Reviews, Research Tools and Images at:  
[www.novusbio.com/H00009244-M01](http://www.novusbio.com/H00009244-M01)

Updated 2/21/2025 v.20.1

Earn rewards for product  
reviews and publications.

Submit a publication at [www.novusbio.com/publications](http://www.novusbio.com/publications)

Submit a review at [www.novusbio.com/reviews/destination/H00009244-M01](http://www.novusbio.com/reviews/destination/H00009244-M01)



**H00009244-M01**

CRLF1 Antibody (4F4) - Azide and BSA Free

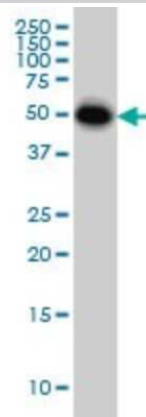
Product Information	
Unit Size	0.1 mg
Concentration	Concentrations vary lot to lot. See vial label for concentration. If unlisted please contact technical services.
Storage	Aliquot and store at -20C or -80C. Avoid freeze-thaw cycles.
Clonality	Monoclonal
Clone	4F4
Preservative	No Preservative
Isotype	IgG2a Kappa
Purity	IgG purified
Buffer	In 1x PBS, pH 7.4

Product Description	
Host	Mouse
Gene ID	9244
Gene Symbol	CRLF1
Species	Human
Specificity/Sensitivity	CRLF1 - cytokine receptor-like factor 1
Immunogen	CRLF1 (NP_004741, 135 a.a. ~ 230 a.a) partial recombinant protein with GST tag. MW of the GST tag alone is 26 KDa. PEKPVNISCWSKNMKDLTCRWTPGAHGETFLHTNYSLKYKLRWYGQDNTCEE YHTVGPHSCHIPKDLALFTPYEIWVEATNRLGSARSDVLTLDIL
Notes	This product is produced by and distributed for Abnova, a company based in Taiwan.

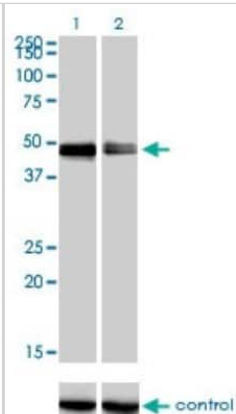
Product Application Details	
Applications	Western Blot, ELISA, Immunoprecipitation, Knockdown Validated
Recommended Dilutions	Western Blot 1:500, ELISA, Immunoprecipitation, Knockdown Validated
Application Notes	Antibody reactive against cell lysate and recombinant protein for western blot. It has also been used for RNAi validation and ELISA.

**Images**

Western Blot: CRLF1 Antibody (4F4) [H00009244-M01] - CRLF1 monoclonal antibody (M01), clone 4F4 Analysis of CRLF1 expression in HeLa.



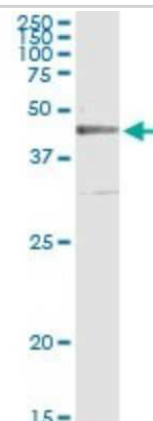
Western Blot: CRLF1 Antibody (4F4) [H00009244-M01] - Analysis of CRLF1 over-expressed 293 cell line, cotransfected with CRLF1 Validated Chimera RNAi ( Cat # H00009244-R01V ) (Lane 2) or non-transfected control (Lane 1). Blot probed with CRLF1 monoclonal antibody (M01), clone 4F4 (Cat # H00009244-M01 ). GAPDH ( 36.1 kDa ) used as specificity and loading control.



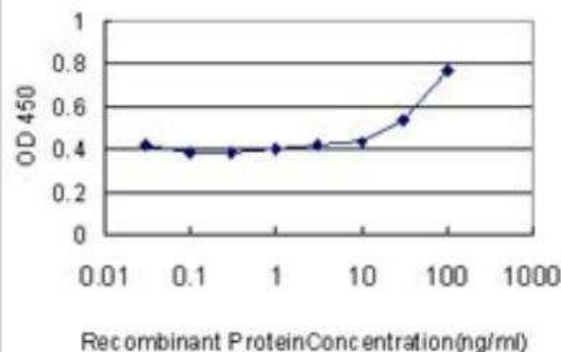
Western Blot: CRLF1 Antibody (4F4) [H00009244-M01] - Analysis of CRLF1 expression in transfected 293T cell line by CRLF1 monoclonal antibody (M01), clone 4F4. Lane 1: CRLF1 transfected lysate (46.3 kDa). Lane 2: Non-transfected lysate.



Immunoprecipitation: CRLF1 Antibody (4F4) [H00009244-M01] - Analysis of CRLF1 transfected lysate using anti-CRLF1 monoclonal antibody and Protein A Magnetic Bead, and immunoblotted with CRLF1 MaxPab rabbit polyclonal antibody.



ELISA: CRLF1 Antibody (4F4) [H00009244-M01] - Detection limit for recombinant GST tagged CRLF1 is approximately 0.03ng/ml as a capture antibody.





### **Novus Biologicals USA**

10730 E. Briarwood Avenue  
Centennial, CO 80112  
USA  
Phone: 303.730.1950  
Toll Free: 1.888.506.6887  
Fax: 303.730.1966  
nb-customerservice@bio-techne.com

### **Bio-Techne Canada**

21 Canmotor Ave  
Toronto, ON M8Z 4E6  
Canada  
Phone: 905.827.6400  
Toll Free: 855.668.8722  
Fax: 905.827.6402  
canada.inquires@bio-techne.com

### **Bio-Techne Ltd**

19 Barton Lane  
Abingdon Science Park  
Abingdon, OX14 3NB, United Kingdom  
Phone: (44) (0) 1235 529449  
Free Phone: 0800 37 34 15  
Fax: (44) (0) 1235 533420  
info.EMEA@bio-techne.com

### **General Contact Information**

www.novusbio.com  
Technical Support: nb-technical@bio-techne.com  
Orders: nb-customerservice@bio-techne.com  
General: novus@novusbio.com

### **Products Related to H00009244-M01**

---

HAF007	Goat anti-Mouse IgG Secondary Antibody [HRP]
NB720-B	Rabbit anti-Mouse IgG (H+L) Secondary Antibody [Biotin]
NBP1-96981-0.5mg	Mouse IgG2a Kappa Isotype Control (M2AK)
H00009244-P01-2ug	Recombinant Human CRLF1 GST (N-Term) Protein

---

### **Limitations**

This product is for research use only and is not approved for use in humans or in clinical diagnosis. Primary Antibodies are guaranteed for 1 year from date of receipt.

For more information on our 100% guarantee, please visit [www.novusbio.com/guarantee](http://www.novusbio.com/guarantee)

Earn gift cards/discounts by submitting a review: [www.novusbio.com/reviews/submit/H00009244-M01](http://www.novusbio.com/reviews/submit/H00009244-M01)

Earn gift cards/discounts by submitting a publication using this product:  
[www.novusbio.com/publications](http://www.novusbio.com/publications)

