

# Product Datasheet

## Wee1 Antibody - Azide and BSA Free H00007465-D01P

Unit Size: 0.1 mg

Aliquot and store at -20C or -80C. Avoid freeze-thaw cycles.

[www.novusbio.com](http://www.novusbio.com)



[technical@novusbio.com](mailto:technical@novusbio.com)

Protocols, Publications, Related Products, Reviews, Research Tools and Images at:  
[www.novusbio.com/H00007465-D01P](http://www.novusbio.com/H00007465-D01P)

Updated 2/21/2025 v.20.1

Earn rewards for product  
reviews and publications.

Submit a publication at [www.novusbio.com/publications](http://www.novusbio.com/publications)

Submit a review at [www.novusbio.com/reviews/destination/H00007465-D01P](http://www.novusbio.com/reviews/destination/H00007465-D01P)



**H00007465-D01P**

Wee1 Antibody - Azide and BSA Free

Product Information	
Unit Size	0.1 mg
Concentration	Concentrations vary lot to lot. See vial label for concentration. If unlisted please contact technical services.
Storage	Aliquot and store at -20C or -80C. Avoid freeze-thaw cycles.
Clonality	Polyclonal
Preservative	No Preservative
Isotype	IgG
Purity	Protein A purified
Buffer	PBS (pH 7.4)

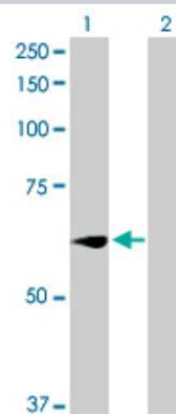
Product Description	
Description	Quality control test: Antibody reactive against mammalian transfected lysate.
Host	Rabbit
Gene ID	7465
Gene Symbol	WEE1
Species	Human
Specificity/Sensitivity	WEE1 - WEE1 homolog (S. pombe),
Immunogen	WEE1 (AAH51831.1, 1 a.a. - 646 a.a.) full-length human protein. MSFLSRQQPPPPRRAGAACTLRQKLIFSPCSDCEEEEEEEEEEGSGHSTGED SAFQEPDSPLPPARSPTEPGPERRRSPGPAPGSPGELEEDLLPGACPGADE AGGGAEGDSWEEEGFGSSSPVKSPAAPYFLGSSFSVRCGGPGDASPRGCG ARRAGEGRRSPRPDHPGTPPHKTFRKLRLFDTPHTPKSLLSKARGIDSSSVKL RGSSLFMDTEKSGKREFDVRQTPQVNINPFTPDLSLLHSSGQCRRRKRTYWN DSCGEDMEASDYELEDETRPAKRITITESNMKSRYTTEFHELEKIGSGEFGSVF KCVKRLDGCYIAIKRSKKPLAGSVDEQNALREVYAHAVLGQHSHVVRYSAWA EDDHMLIQNEYRNGGSLADAISENYRIMSYFKEAELKDLLLQVGRGLRYIHSM LVHMDIKPSNIFISRTSIPNAASEEGDEDDWASNKVMFKIGDLGHVTRISSPQVE EGDSRFLANEVLQENYTHLPKADIFALALTVVCAAGAEPLPRNGDQWHEIRQG RLPRIPQVLSQEFTTELLKVMHPDPERRPSAMALVKHSVLLSASRKSAEQLRIEL NAEKFKNSLLQKELKKAQMAKAAAEERALFTDRMATRSTTQSNRTSRLIGKKM NRSVSLTIY
Notes	This product is produced by and distributed for Abnova, a company based in Taiwan.

Product Application Details	
Applications	Western Blot, Proximity Ligation Assay
Recommended Dilutions	Western Blot, Proximity Ligation Assay
Application Notes	Antibody reactivity against Recombinant Protein with GST tag on ELISA and WB and also on transfected lysate in WB. GST tag alone is used as a negative control.

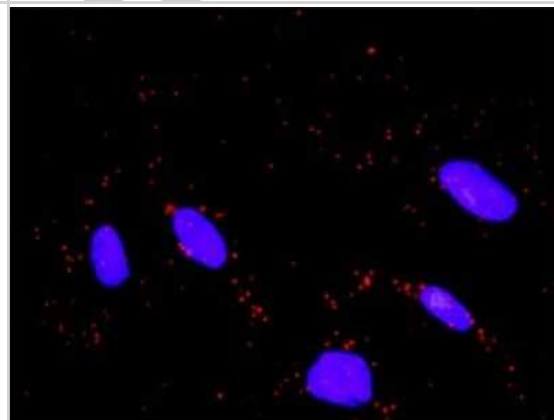


## Images

Western Blot: Wee1 Antibody [H00007465-D01P] - Analysis of WEE1 expression in transfected 293T cell line by WEE1 polyclonal antibody. Lane 1: WEE1 transfected lysate(71.70 KDa). Lane 2: Non-transfected lysate.



Proximity Ligation Assay: Wee1 Antibody [H00007465-D01P] - Analysis of protein-protein interactions between WEE1 and FBXW11. HeLa cells were stained with anti-WEE1 rabbit purified polyclonal 1:1200 and anti-FBXW11 mouse monoclonal antibody 1:50. Each red dot represents the detection of protein-protein interaction complex, and nuclei were counterstained with DAPI (blue).





### **Novus Biologicals USA**

10730 E. Briarwood Avenue  
Centennial, CO 80112  
USA  
Phone: 303.730.1950  
Toll Free: 1.888.506.6887  
Fax: 303.730.1966  
nb-customerservice@bio-techne.com

### **Bio-Techne Canada**

21 Canmotor Ave  
Toronto, ON M8Z 4E6  
Canada  
Phone: 905.827.6400  
Toll Free: 855.668.8722  
Fax: 905.827.6402  
canada.inquires@bio-techne.com

### **Bio-Techne Ltd**

19 Barton Lane  
Abingdon Science Park  
Abingdon, OX14 3NB, United Kingdom  
Phone: (44) (0) 1235 529449  
Free Phone: 0800 37 34 15  
Fax: (44) (0) 1235 533420  
info.EMEA@bio-techne.com

### **General Contact Information**

www.novusbio.com  
Technical Support: nb-technical@bio-techne.com  
Orders: nb-customerservice@bio-techne.com  
General: novus@novusbio.com

### **Products Related to H00007465-D01P**

---

HAF008	Goat anti-Rabbit IgG Secondary Antibody [HRP]
NB7160	Goat anti-Rabbit IgG (H+L) Secondary Antibody [HRP]
NBP2-24891	Rabbit IgG Isotype Control
H00007465-P01-10ug	Recombinant Human Wee1 GST (N-Term) Protein

---

### **Limitations**

This product is for research use only and is not approved for use in humans or in clinical diagnosis. Primary Antibodies are guaranteed for 1 year from date of receipt.

For more information on our 100% guarantee, please visit [www.novusbio.com/guarantee](http://www.novusbio.com/guarantee)

Earn gift cards/discounts by submitting a review: [www.novusbio.com/reviews/submit/H00007465-D01P](http://www.novusbio.com/reviews/submit/H00007465-D01P)

Earn gift cards/discounts by submitting a publication using this product:  
[www.novusbio.com/publications](http://www.novusbio.com/publications)

