

Product Datasheet

Thymidine Kinase 1 Antibody (3E2) - Azide and BSA Free H00007083-M06

Unit Size: 0.1 mg

Aliquot and store at -20C or -80C. Avoid freeze-thaw cycles.

www.novusbio.com



technical@novusbio.com

Protocols, Publications, Related Products, Reviews, Research Tools and Images at:
www.novusbio.com/H00007083-M06

Updated 2/21/2025 v.20.1

Earn rewards for product
reviews and publications.

Submit a publication at www.novusbio.com/publications

Submit a review at www.novusbio.com/reviews/destination/H00007083-M06



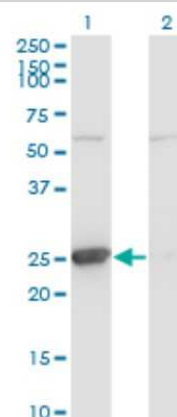
H00007083-M06**Thymidine Kinase 1 Antibody (3E2) - Azide and BSA Free**

| Product Information | |
|------------------------------------|--|
| Unit Size | 0.1 mg |
| Concentration | Concentrations vary lot to lot. See vial label for concentration. If unlisted please contact technical services. |
| Storage | Aliquot and store at -20C or -80C. Avoid freeze-thaw cycles. |
| Clonality | Monoclonal |
| Clone | 3E2 |
| Preservative | No Preservative |
| Isotype | IgG2b Kappa |
| Purity | IgG purified |
| Buffer | In 1x PBS, pH 7.4 |
| Product Description | |
| Description | Quality control test: Antibody Reactive Against Recombinant Protein. |
| Host | Mouse |
| Gene ID | 7083 |
| Gene Symbol | TK1 |
| Species | Human |
| Specificity/Sensitivity | TK1 - thymidine kinase 1, soluble (3E2) |
| Immunogen | TK1 (AAH07986.1, 1 a.a. ~ 234 a.a) full-length recombinant protein with GST tag. MW of the GST tag alone is 26 KDa. MSCINLPTVLPGPSKTRGQIQVILGPMFSGKSTELMRRVRRFQIAQYKCLVIKY AKDTRYSSSFCTHDRNTMEALPACLLRDVAQEALGVAVIGIDEGQFFPDIVEFC EAMANAGKTVIVAALDGTFRKPFGAILNLVPLAESVVKLTAVCMEECFREAAAYT KRLGTEKEVEVIGGADKYHSVCRLCYFKKASGQPAGPDNKENCVPVPGKPGEA VAARKLFAPQQILQCSPAN |
| Notes | This product is produced by and distributed for Abnova, a company based in Taiwan. |
| Product Application Details | |
| Applications | Western Blot, ELISA, Sandwich ELISA |
| Recommended Dilutions | Western Blot, ELISA, Sandwich ELISA |
| Application Notes | Antibody reactivity against Recombinant Protein with GST tag on ELISA and WB. GST tag alone is used as a negative control. |

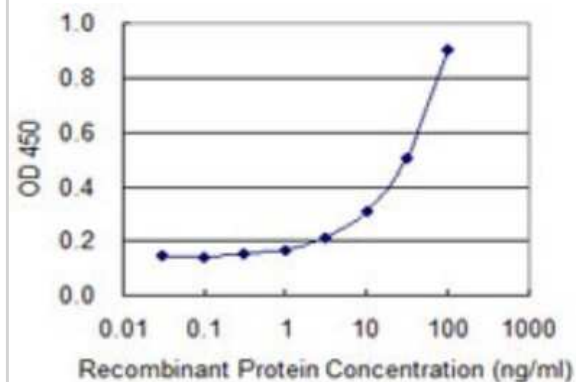


Images

Western Blot: Thymidine Kinase 1 Antibody (3E2) [H00007083-M06] - Analysis of TK1 expression in transfected 293T cell line by TK1 monoclonal antibody (M06), clone 3E2. Lane 1: TK1 transfected lysate (25.5 KDa). Lane 2: Non-transfected lysate.



Sandwich ELISA: Thymidine Kinase 1 Antibody (3E2) [H00007083-M06] - Detection limit for recombinant GST tagged TK1 is 1 ng/ml as a capture antibody.





Novus Biologicals USA

10730 E. Briarwood Avenue
Centennial, CO 80112
USA
Phone: 303.730.1950
Toll Free: 1.888.506.6887
Fax: 303.730.1966
nb-customerservice@bio-techne.com

Bio-Techne Canada

21 Canmotor Ave
Toronto, ON M8Z 4E6
Canada
Phone: 905.827.6400
Toll Free: 855.668.8722
Fax: 905.827.6402
canada.inquires@bio-techne.com

Bio-Techne Ltd

19 Barton Lane
Abingdon Science Park
Abingdon, OX14 3NB, United Kingdom
Phone: (44) (0) 1235 529449
Free Phone: 0800 37 34 15
Fax: (44) (0) 1235 533420
info.EMEA@bio-techne.com

General Contact Information

www.novusbio.com
Technical Support: nb-technical@bio-techne.com
Orders: nb-customerservice@bio-techne.com
General: novus@novusbio.com

Products Related to H00007083-M06

| | |
|------------------|---|
| HAF007 | Goat anti-Mouse IgG Secondary Antibody [HRP] |
| NB720-B | Rabbit anti-Mouse IgG (H+L) Secondary Antibody [Biotin] |
| NBP1-43317-0.5mg | Mouse IgG2b Kappa Light Chain Isotype Control (MG2b) |
| NBP1-98920-100ug | Recombinant Human Thymidine Kinase 1 His Protein |

Limitations

This product is for research use only and is not approved for use in humans or in clinical diagnosis. Primary Antibodies are guaranteed for 1 year from date of receipt.

For more information on our 100% guarantee, please visit www.novusbio.com/guarantee

Earn gift cards/discounts by submitting a review: www.novusbio.com/reviews/submit/H00007083-M06

Earn gift cards/discounts by submitting a publication using this product:
www.novusbio.com/publications

