

Product Datasheet

TBL1 Antibody (2B6) - Azide and BSA Free H00006907-M07

Unit Size: 0.1 mg

Aliquot and store at -20C or -80C. Avoid freeze-thaw cycles.

www.novusbio.com



technical@novusbio.com

Protocols, Publications, Related Products, Reviews, Research Tools and Images at:
www.novusbio.com/H00006907-M07

Updated 2/21/2025 v.20.1

**Earn rewards for product
reviews and publications.**

Submit a publication at www.novusbio.com/publications

Submit a review at www.novusbio.com/reviews/destination/H00006907-M07



H00006907-M07

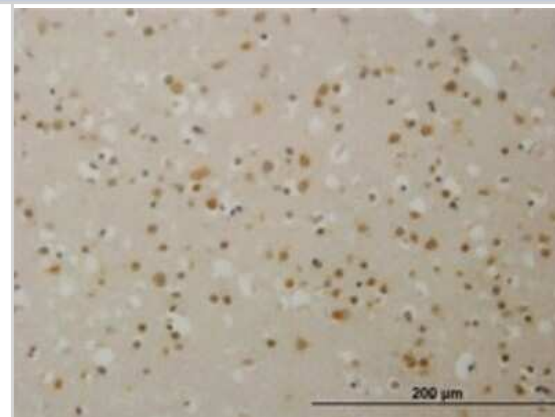
TBL1 Antibody (2B6) - Azide and BSA Free

Product Information	
Unit Size	0.1 mg
Concentration	Concentrations vary lot to lot. See vial label for concentration. If unlisted please contact technical services.
Storage	Aliquot and store at -20C or -80C. Avoid freeze-thaw cycles.
Clonality	Monoclonal
Clone	2B6
Preservative	No Preservative
Isotype	IgG2b Kappa
Purity	IgG purified
Buffer	In 1x PBS, pH 7.4
Product Description	
Description	Quality control test: Antibody Reactive Against Recombinant Protein.
Host	Mouse
Gene ID	6907
Gene Symbol	TBL1X
Species	Human
Specificity/Sensitivity	TBL1X - transducin (beta)-like 1X-linked
Immunogen	TBL1X (NP_005638, 478 a.a. ~ 577 a.a) partial recombinant protein with GST tag. MW of the GST tag alone is 26 KDa. LASASFDSTVRLWDIERGVCTHTLTKHQEPVYSVAFSPDGKYLASGSFDKCVHI WNTQSGNLVHSYRGTTGGIFEVCWNARGDKVGASASDGSVCVLDLRK
Notes	This product is produced by and distributed for Abnova, a company based in Taiwan.
Product Application Details	
Applications	ELISA, Immunohistochemistry, Immunohistochemistry-Paraffin, Proximity Ligation Assay, Sandwich ELISA
Recommended Dilutions	ELISA, Immunohistochemistry, Immunohistochemistry-Paraffin, Proximity Ligation Assay, Sandwich ELISA
Application Notes	Antibody reactivity against recombinant protein on ELISA. GST alone used as a negative control. It has been used for IHC-P.

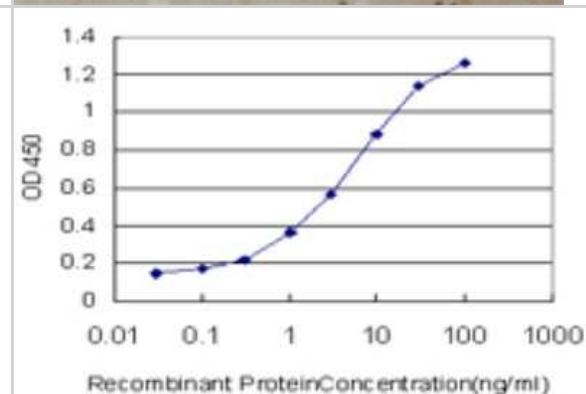


Images

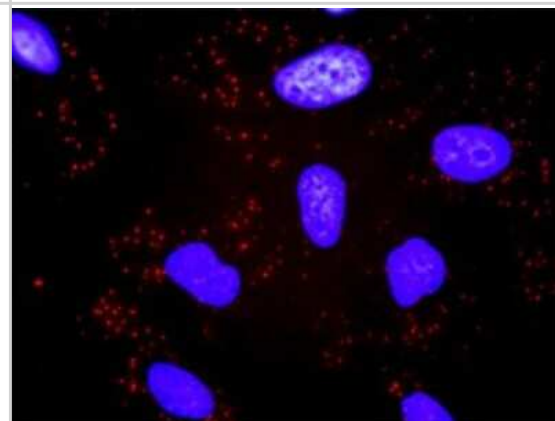
Immunohistochemistry-Paraffin: TBL1 Antibody (2B6) [H00006907-M07]
- Analysis of monoclonal antibody to TBL1X on formalin-fixed paraffin-embedded human cerebral cortex. Antibody concentration 1.5 ug/ml



Sandwich ELISA: TBL1 Antibody (2B6) [H00006907-M07] - Detection limit for recombinant GST tagged TBL1X is approximately 0.3ng/ml as a capture antibody.



Proximity Ligation Assay: TBL1 Antibody (2B6) [H00006907-M07] - Analysis of protein-protein interactions between CACYBP and TBL1X. HeLa cells were stained with anti-CACYBP rabbit purified polyclonal 1:1200 and anti-TBL1X mouse monoclonal antibody 1:50. Each red dot represents the detection of protein-protein interaction.





Novus Biologicals USA

10730 E. Briarwood Avenue
Centennial, CO 80112
USA
Phone: 303.730.1950
Toll Free: 1.888.506.6887
Fax: 303.730.1966
nb-customerservice@bio-techne.com

Bio-Techne Canada

21 Canmotor Ave
Toronto, ON M8Z 4E6
Canada
Phone: 905.827.6400
Toll Free: 855.668.8722
Fax: 905.827.6402
canada.inquires@bio-techne.com

Bio-Techne Ltd

19 Barton Lane
Abingdon Science Park
Abingdon, OX14 3NB, United Kingdom
Phone: (44) (0) 1235 529449
Free Phone: 0800 37 34 15
Fax: (44) (0) 1235 533420
info.EMEA@bio-techne.com

General Contact Information

www.novusbio.com
Technical Support: nb-technical@bio-techne.com
Orders: nb-customerservice@bio-techne.com
General: novus@novusbio.com

Products Related to H00006907-M07

HAF007	Goat anti-Mouse IgG Secondary Antibody [HRP]
NB720-B	Rabbit anti-Mouse IgG (H+L) Secondary Antibody [Biotin]
NBP1-43317-0.5mg	Mouse IgG2b Kappa Light Chain Isotype Control (MG2b)
H00006907-P01-10ug	Recombinant Human TBL1 GST (N-Term) Protein

Limitations

This product is for research use only and is not approved for use in humans or in clinical diagnosis. Primary Antibodies are guaranteed for 1 year from date of receipt.

For more information on our 100% guarantee, please visit www.novusbio.com/guarantee

Earn gift cards/discounts by submitting a review: www.novusbio.com/reviews/submit/H00006907-M07

Earn gift cards/discounts by submitting a publication using this product:
www.novusbio.com/publications

