

# Product Datasheet

## MCT1/SLC16A1 Antibody - Azide and BSA Free H00006566-B01P

Unit Size: 0.05 mg

Aliquot and store at -20C or -80C. Avoid freeze-thaw cycles.

[www.novusbio.com](http://www.novusbio.com)



[technical@novusbio.com](mailto:technical@novusbio.com)

### Publications: 3

Protocols, Publications, Related Products, Reviews, Research Tools and Images at:  
[www.novusbio.com/H00006566-B01P](http://www.novusbio.com/H00006566-B01P)

Updated 2/21/2025 v.20.1

Earn rewards for product  
reviews and publications.

Submit a publication at [www.novusbio.com/publications](http://www.novusbio.com/publications)

Submit a review at [www.novusbio.com/reviews/destination/H00006566-B01P](http://www.novusbio.com/reviews/destination/H00006566-B01P)



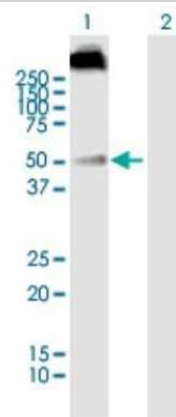
**H00006566-B01P**

MCT1/SLC16A1 Antibody - Azide and BSA Free

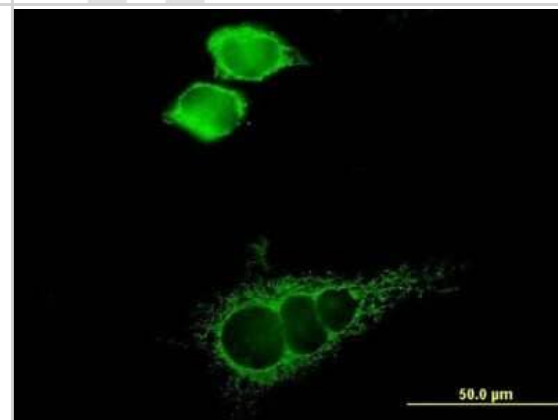
<b>Product Information</b>	
<b>Unit Size</b>	0.05 mg
<b>Concentration</b>	Concentrations vary lot to lot. See vial label for concentration. If unlisted please contact technical services.
<b>Storage</b>	Aliquot and store at -20C or -80C. Avoid freeze-thaw cycles.
<b>Clonality</b>	Polyclonal
<b>Preservative</b>	No Preservative
<b>Isotype</b>	IgG
<b>Purity</b>	Protein A purified
<b>Buffer</b>	PBS (pH 7.4)
<b>Product Description</b>	
<b>Description</b>	Quality control test: Antibody reactive against mammalian transfected lysate.
<b>Host</b>	Mouse
<b>Gene ID</b>	6566
<b>Gene Symbol</b>	SLC16A1
<b>Species</b>	Human, Mouse
<b>Reactivity Notes</b>	Mouse reactivity reported in scientific literature (PMID: 24367518). Please note that this antibody is reactive to Mouse and derived from the same host, Mouse. Additional Mouse on Mouse blocking steps may be required for IHC and ICC experiments. Please contact Technical Support for more information.
<b>Specificity/Sensitivity</b>	Reacts with solute carrier family 16 (monocarboxylic acid transporters), member 1.
<b>Immunogen</b>	SLC16A1 (P53985, 1 a.a. - 500 a.a.) full-length human protein. MPPAVGGPVG YTPPDGGWGWAVVIGAFISIGFSYAFPKSITVFFKEIEGIFHATT SEVSWISSIMLAVMYGGGPISSILVNKYGSRIVMIVGGCLSGCGLIAASFCNTVQ QLYVCIGVIGGLGLAFNLPALTMIGKYFYKRRPLANGLAMAGSPVFLCTLAPLN QVFFGIFGWRGSFLILGGLLNCCVAGALMRPIGPKPTKAGKDKSKASLEKAGK SGVKKDLHDANTDLIGRHPKQEKRSVFQTINQFLDLTLFTHRGFLLYLSGNVIMF FGLFAPLVFLSSYGKSQHYSSSEKSAFLLSILAFVDMVARPSMGLVANTKPIRPRI QYFFAASVVANGVCHMLAPLSTTYVGFCVYAGFFGFAGWLSSVLFETLMDLV GPQRFSSAVGLVTIVECCPVLLGPPLLGRNDMYGDYKYTYWACGVVLIISGIY LFIGMGINYRLLAKEQKANEQKESKEEETSIDVAGKPNVETKAAESPDQKDTE GGPKEEESPV
<b>Notes</b>	This product is produced by and distributed for Abnova, a company based in Taiwan.
<b>Product Application Details</b>	
<b>Applications</b>	Western Blot, Immunocytochemistry/ Immunofluorescence
<b>Recommended Dilutions</b>	Western Blot 1:500, Immunocytochemistry/ Immunofluorescence
<b>Application Notes</b>	This antibody is reactive against transfected lysate in WB, IF and as a detection antibody in ELISA.

## Images

Western Blot: MCT1/SLC16A1 Antibody [H00006566-B01P] - Analysis of SLC16A1 expression in transfected 293T cell line by SLC16A1 polyclonal antibody. Lane 1: SLC16A1 transfected lysate(55 KDa). Lane 2: Non-transfected lysate.



Immunocytochemistry/Immunofluorescence: MCT1/SLC16A1 Antibody [H00006566-B01P] - Analysis of purified antibody to SLC16A1 on HeLa cell. (antibody concentration 10 ug/ml)



## Publications

Chatel B, Messonnier LA, Barge Q et al. Endurance training reduces exercise-induced acidosis and improves muscle function in a mouse model of sickle cell disease. *Mol Genet Metab* 2018-03-01 [PMID: 29307759] (Mouse)

Chatel B, Bendahan D, Hourde C et al. Role of MCT1 and CAII in skeletal muscle pH homeostasis, energetics, and function: in vivo insights from MCT1 haploinsufficient mice. *FASEB J*. 2017-03-02 [PMID: 28254758] (Mouse)

Lengacher S, Nehiri-Sitayeb T, Steiner N et al. Resistance to Diet-Induced Obesity and Associated Metabolic Perturbations in Haploinsufficient Monocarboxylate Transporter 1 Mice. *PLoS One* 2013-12-18 [PMID: 24367518] (WB, Mouse)



### **Novus Biologicals USA**

10730 E. Briarwood Avenue  
Centennial, CO 80112  
USA  
Phone: 303.730.1950  
Toll Free: 1.888.506.6887  
Fax: 303.730.1966  
nb-customerservice@bio-techne.com

### **Bio-Techne Canada**

21 Canmotor Ave  
Toronto, ON M8Z 4E6  
Canada  
Phone: 905.827.6400  
Toll Free: 855.668.8722  
Fax: 905.827.6402  
canada.inquires@bio-techne.com

### **Bio-Techne Ltd**

19 Barton Lane  
Abingdon Science Park  
Abingdon, OX14 3NB, United Kingdom  
Phone: (44) (0) 1235 529449  
Free Phone: 0800 37 34 15  
Fax: (44) (0) 1235 533420  
info.EMEA@bio-techne.com

### **General Contact Information**

www.novusbio.com  
Technical Support: nb-technical@bio-techne.com  
Orders: nb-customerservice@bio-techne.com  
General: novus@novusbio.com

### **Products Related to H00006566-B01P**

---

HAF007	Goat anti-Mouse IgG Secondary Antibody [HRP]
NB720-B	Rabbit anti-Mouse IgG (H+L) Secondary Antibody [Biotin]
NBP1-97019-5mg	Mouse IgG Isotype Control
NBP1-59656PEP	MCT1/SLC16A1 Antibody Blocking Peptide

---

### **Limitations**

This product is for research use only and is not approved for use in humans or in clinical diagnosis. Primary Antibodies are guaranteed for 1 year from date of receipt.

For more information on our 100% guarantee, please visit [www.novusbio.com/guarantee](http://www.novusbio.com/guarantee)

Earn gift cards/discounts by submitting a review: [www.novusbio.com/reviews/submit/H00006566-B01P](http://www.novusbio.com/reviews/submit/H00006566-B01P)

Earn gift cards/discounts by submitting a publication using this product:  
[www.novusbio.com/publications](http://www.novusbio.com/publications)

