

# Product Datasheet

## Recombinant Human RS1 GST (N-Term) Protein H00006247-P01-10ug

Unit Size: 10 ug

Store at -80C. Avoid freeze-thaw cycles.

[www.novusbio.com](http://www.novusbio.com)



[technical@novusbio.com](mailto:technical@novusbio.com)

Protocols, Publications, Related Products, Reviews, Research Tools and Images at:  
[www.novusbio.com/H00006247-P01](http://www.novusbio.com/H00006247-P01)

Updated 10/23/2024 v.20.1

Earn rewards for product  
reviews and publications.

Submit a publication at [www.novusbio.com/publications](http://www.novusbio.com/publications)

Submit a review at [www.novusbio.com/reviews/destination/H00006247-P01](http://www.novusbio.com/reviews/destination/H00006247-P01)



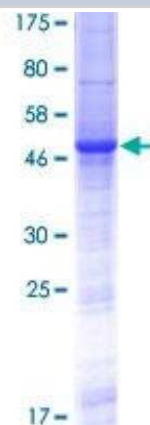
**H00006247-P01-10ug**

## Recombinant Human RS1 GST (N-Term) Protein

Product Information	
Unit Size	10 ug
Concentration	Please see the vial label for concentration. If unlisted please contact technical services.
Storage	Store at -80C. Avoid freeze-thaw cycles.
Preservative	No Preservative
Purity	>80% by SDS-PAGE and Coomassie blue staining
Buffer	50 mM Tris-HCl, 10 mM reduced Glutathione, pH 8.0 in the elution buffer.
Target Molecular Weight	51.59 kDa
Product Description	
Description	<p>A recombinant protein with GST tag at N-terminal corresponding to the amino acids 1-224 of Human RS1</p> <p><b>Source:</b> <i>Wheat Germ (in vitro)</i></p> <p><b>Amino Acid Sequence:</b>  MSRKIEGFLLLLLFGYEATLGLSSTEDEGEDPWYQKACKCDCQGPNALWSA  GATSLDCIPECPYHKPLGFESGEVTPDQITCSNPEQYVGVYSSWTANKARLNS  QGFGCAWLSKFQDSSQWLQIDLKEIKVISGILTQGRCDIDEWMTKYSVQYRTD  ERLNWIYYKDQTGNRRVFGNSDRTSTVQNLLRPPIISRFIRLIPLGWHVRIAIR  MELLECVSKCA</p>
Gene ID	6247
Gene Symbol	RS1
Species	Human
Preparation Method	in vitro wheat germ expression system
Details of Functionality	This protein was produced in an in vitro wheat germ expression system that should preserve correct conformational folding that is necessary for biological function. While it is possible that this protein could display some level of activity, the functionality of this protein has not been explicitly measured or validated.
Notes	This product is produced by and distributed for Abnova, a company based in Taiwan.
Product Application Details	
Applications	Western Blot, ELISA, Protein Array, Immunoaffinity Purification
Recommended Dilutions	Western Blot, ELISA, Protein Array, Immunoaffinity Purification

**Images**

SDS-Page: Recombinant Human RS1 Protein [H00006247-P01] - 12.5%  
SDS-PAGE Stained with Coomassie Blue.





### **Novus Biologicals USA**

10730 E. Briarwood Avenue  
Centennial, CO 80112  
USA  
Phone: 303.730.1950  
Toll Free: 1.888.506.6887  
Fax: 303.730.1966  
nb-customerservice@bio-techne.com

### **Bio-Techne Canada**

21 Canmotor Ave  
Toronto, ON M8Z 4E6  
Canada  
Phone: 905.827.6400  
Toll Free: 855.668.8722  
Fax: 905.827.6402  
canada.inquires@bio-techne.com

### **Bio-Techne Ltd**

19 Barton Lane  
Abingdon Science Park  
Abingdon, OX14 3NB, United Kingdom  
Phone: (44) (0) 1235 529449  
Free Phone: 0800 37 34 15  
Fax: (44) (0) 1235 533420  
info.EMEA@bio-techne.com

### **General Contact Information**

www.novusbio.com  
Technical Support: nb-technical@bio-techne.com  
Orders: nb-customerservice@bio-techne.com  
General: novus@novusbio.com

### **Products Related to H00006247-P01-10ug**

---

NBP2-56487PEP	RS1 Recombinant Protein Antigen
NB100-355	RPE65 Antibody (401.8B11.3D9) - BSA Free
H00006247-B01P	RS1 Antibody
H00001406-M02	CRX/CORD2 Antibody (4G11)

---

### **Limitations**

This product is for research use only and is not approved for use in humans or in clinical diagnosis. Peptides and proteins are guaranteed for 3 months from date of receipt.

For more information on our 100% guarantee, please visit [www.novusbio.com/guarantee](http://www.novusbio.com/guarantee)

Earn gift cards/discounts by submitting a review: [www.novusbio.com/reviews/submit/H00006247-P01](http://www.novusbio.com/reviews/submit/H00006247-P01)

Earn gift cards/discounts by submitting a publication using this product:  
[www.novusbio.com/publications](http://www.novusbio.com/publications)

