

# Product Datasheet

## Radixin Antibody (1E12) - Azide and BSA Free H00005962-M01

Unit Size: 0.05 mg

Aliquot and store at -20C or -80C. Avoid freeze-thaw cycles.

[www.novusbio.com](http://www.novusbio.com)



[technical@novusbio.com](mailto:technical@novusbio.com)

### Publications: 1

Protocols, Publications, Related Products, Reviews, Research Tools and Images at:  
[www.novusbio.com/H00005962-M01](http://www.novusbio.com/H00005962-M01)

Updated 2/21/2025 v.20.1

Earn rewards for product  
reviews and publications.

Submit a publication at [www.novusbio.com/publications](http://www.novusbio.com/publications)

Submit a review at [www.novusbio.com/reviews/destination/H00005962-M01](http://www.novusbio.com/reviews/destination/H00005962-M01)



**H00005962-M01**

Radixin Antibody (1E12) - Azide and BSA Free

Product Information	
Unit Size	0.05 mg
Concentration	This product is unpurified. The exact concentration of antibody is not quantifiable.
Storage	Aliquot and store at -20C or -80C. Avoid freeze-thaw cycles.
Clonality	Monoclonal
Clone	1E12
Preservative	No Preservative
Isotype	IgG2b Kappa
Purity	Ascites
Buffer	In 1x PBS, pH 7.4

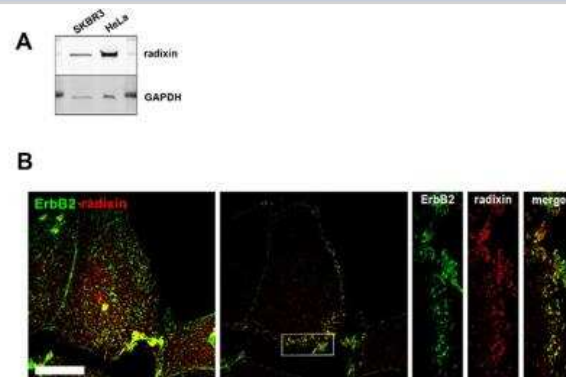
Product Description	
Description	Quality control test: Antibody Reactive Against Recombinant Protein.
Host	Mouse
Gene ID	5962
Gene Symbol	RDX
Species	Human
Specificity/Sensitivity	RDX - radixin (1E12)
Immunogen	RDX (AAH47109, 1 a.a. ~ 583 a.a) full-length recombinant protein with GST tag. MW of the GST tag alone is 26 KDa. MPKPINVRVTTMDAELEFAIQPNTTGKQLFDQVVKT VGLREVWFFGLQYVDSK GYSTWLKLNKKVTQQDVKKENPLQFKFRAKFFPEDVSEELIQEITQRLFFLQVK EAILNDEIYCPPETAVLLASYAVQAKYGDYNKEIHKPGYLANDRLLPQRVLEQH KLTK EQWEERIQNWHEEHARGMLREDSMMEYLKIAQDLEMYGVNYFEIKNKKG TELWLGV DALGLNIYEHDDKLT PKIGFPWSEIRNISFNDKKFVIKPIDKKAPDFVF YAPRLRINKRILALCMGNHELYMRRRKPD TIEVQQMKAQAREEKHKQQLERAQ LENEKEKREIAEKEKERIEREKEELMERL KQIEEQTIKAQKELEEQTRKALELDQ ERKRAKEEAERLEKERRAAEEAKSAIAKQAADQMKNQEQLAAELAEFTAKIAL EEAKKKKEEEATEWQHKAFAAQEDLEKTK EELKTVMSAPPPPPPPVIPPTEN EHDEHDENNAEASAELSNEGVMNHRSEE EERV TETQKNERVKKQLQALSSELA QARDETKKTQNDVLHAENVKAGRD KYKTLRQIRQGNTKQRIDEFEAM
Notes	This product is produced by and distributed for Abnova, a company based in Taiwan.

Product Application Details	
Applications	Western Blot, ELISA, Immunocytochemistry/ Immunofluorescence
Recommended Dilutions	Western Blot 1:500, ELISA, Immunocytochemistry/ Immunofluorescence 1:10-1:2000
Application Notes	Antibody reactivity against recombinant protein with GST tag on ELISA and WB. GST tag alone is used as a negative control. It has been use for IF.

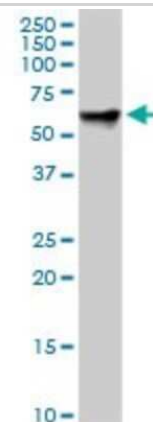


## Images

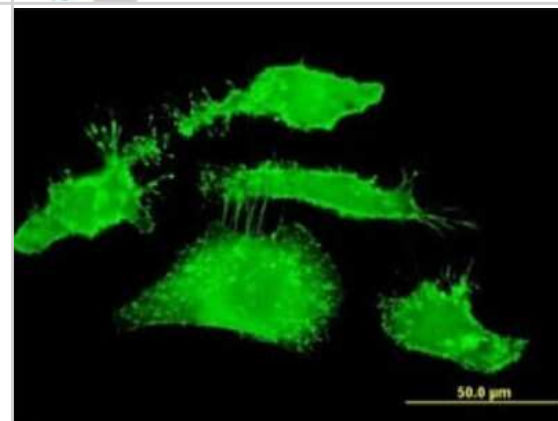
Radixin Antibody (1E12) [H00005962-M01] - (A) Western blot analysis of radixin levels in SKBR3 and HeLa cells. (B) Colocalization of radixin and ErbB2 in SKBR3 cells. 3D-SIM of fixed cells, stained for endogenous ERM and ErbB2, shows a high degree of colocalization between the radixin and ErbB2 at the plasma membrane (left panel: max. projection; middle: single plane section; right: single channels of insert). Scale bars: 10  $\mu$ m. Image collected and cropped by CiteAb from the following publication (<https://www.oncotarget.com/lookup/doi/10.18632/oncotarget.8327>) licensed under a CC-BY license.



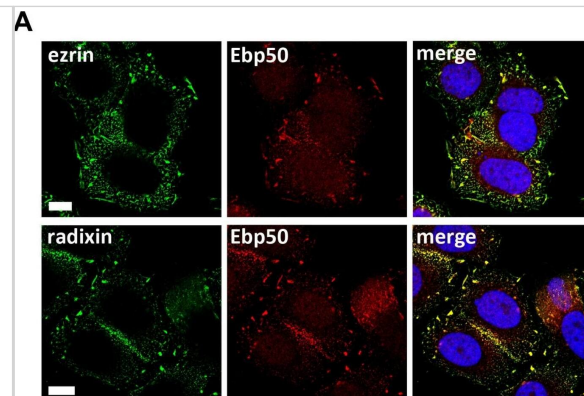
Western Blot: Radixin Antibody (1E12) [H00005962-M01] - RDX monoclonal antibody (M01), clone 1E12. Analysis of RDX expression in human kidney.



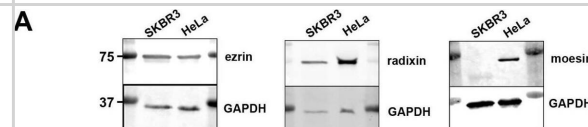
Immunocytochemistry/Immunofluorescence: Radixin Antibody (1E12) [H00005962-M01] - Analysis of monoclonal antibody to RDX on HeLa cell. Antibody concentration 10  $\mu$ g/ml.



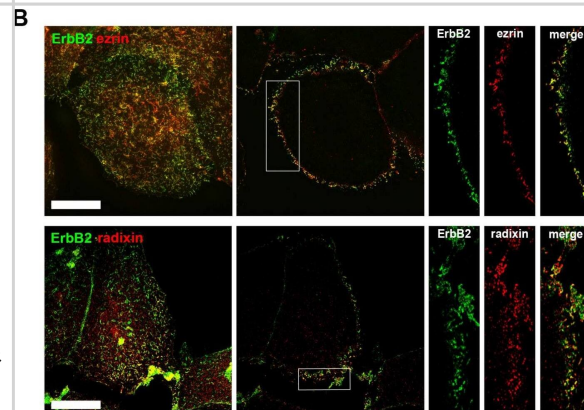
**Immunocytochemistry/ Immunofluorescence: Radixin Antibody (1E12) [H00005962-M01] - Localization studies of ERM proteins, Ebp50 & ErbB2 in SKBR3 cells & protein proximity analysis(A)** Confocal microscopy of ERM proteins & Ebp50. Untreated cells were fixed, permeabilized & stained by specific antibodies for endogenous levels of ezrin, radixin & Ebp50 (max. projection). In SKBR3 cells ezrin & radixin strongly colocalizes with Ebp50 at the plasma membrane. (B) Confocal microscopy (single plane section) & (C) 3D-SIM (max. projections) of ErbB2 & Ebp50 localization. In untreated control conditions, ErbB2 shows a strong colocalization with Ebp50 in lamellipodia-like structures at the plasma membrane. (D-F) Analysis of protein proximity by PLA experiments. SKBR3 cells were transfected either with non-targeting control siRNA or ezrin/radixin specific siRNA. Cells were fixed 72 h after transfection & PLA experiments were performed. The depletion of ezrin or radixin strongly reduces the interaction of ErbB2 with Ebp50 (D), Hsp90 (E) & ErbB3 (F). All results are shown as mean  $\pm$  SEM (\*P < 0.05; \*\*\*P < 0.001). Scale bars: 10  $\mu$ m (A, B), 8  $\mu$ m (C). Image collected & cropped by CiteAb from the following publication (<https://pubmed.ncbi.nlm.nih.gov/27029001>), licensed under a CC-BY license. Not internally tested by Novus Biologicals.



**Western Blot: Radixin Antibody (1E12) [H00005962-M01] - ERM expression & localization in SKBR3 breast cancer cells(A)** Western blot analysis of ERM levels in SKBR3, HeLa & PC3 cells. SKBR3 breast cancer cells do not express moesin. (B) Colocalization of ezrin/radixin & ErbB2 in SKBR3 cells. 3D-SIM of fixed cells, stained for endogenous ERM & ErbB2, shows a high degree of colocalization between the ezrin/radixin & ErbB2 at the plasma membrane (left panel: max. projection; middle: single plane section; right: single channels of insert). Scale bars: 10  $\mu$ m. (C) Analysis of protein association in SKBR3 cells by proximity ligation assay (PLA). 2 h treatment with 3  $\mu$ M GA leads to decreased association of ezrin/ErbB2 & radixin/ErbB2. Data is represented as mean  $\pm$  SEM (\*\*\*P < 0.001). (D) Corresponding single plan section of a representative PLA experiment. Fluorescence & DIC pictures of control cells (upper panel) & cell treated for 2 h with geldanamycin (lower panel) are shown. Scale bars: 10  $\mu$ m. Image collected & cropped by CiteAb from the following publication (<https://pubmed.ncbi.nlm.nih.gov/27029001>), licensed under a CC-BY license. Not internally tested by Novus Biologicals.



**Immunocytochemistry/ Immunofluorescence: Radixin Antibody (1E12) [H00005962-M01] - ERM expression & localization in SKBR3 breast cancer cells(A)** Western blot analysis of ERM levels in SKBR3, HeLa & PC3 cells. SKBR3 breast cancer cells do not express moesin. (B) Colocalization of ezrin/radixin & ErbB2 in SKBR3 cells. 3D-SIM of fixed cells, stained for endogenous ERM & ErbB2, shows a high degree of colocalization between the ezrin/radixin & ErbB2 at the plasma membrane (left panel: max. projection; middle: single plane section; right: single channels of insert). Scale bars: 10  $\mu$ m. (C) Analysis of protein association in SKBR3 cells by proximity ligation assay (PLA). 2 h treatment with 3  $\mu$ M GA leads to decreased association of ezrin/ErbB2 & radixin/ErbB2. Data is represented as mean  $\pm$  SEM (\*\*\*P < 0.001). (D) Corresponding single plan section of a representative PLA experiment. Fluorescence & DIC pictures of control cells (upper panel) & cell treated for 2 h with geldanamycin (lower panel) are shown. Scale bars: 10  $\mu$ m. Image collected & cropped by CiteAb from the following publication (<https://pubmed.ncbi.nlm.nih.gov/27029001>), licensed under a CC-BY license. Not internally tested by Novus Biologicals.



## Publications

Asp N, Kvalvaag A, Sandvig K, Pust S. Regulation of ErbB2 localization and function in breast cancer cells by ERM proteins. *Oncotarget*. 2016-05-03 [PMID: 27029001] (WB, Human)





### **Novus Biologicals USA**

10730 E. Briarwood Avenue  
Centennial, CO 80112  
USA  
Phone: 303.730.1950  
Toll Free: 1.888.506.6887  
Fax: 303.730.1966  
nb-customerservice@bio-techne.com

### **Bio-Techne Canada**

21 Canmotor Ave  
Toronto, ON M8Z 4E6  
Canada  
Phone: 905.827.6400  
Toll Free: 855.668.8722  
Fax: 905.827.6402  
canada.inquires@bio-techne.com

### **Bio-Techne Ltd**

19 Barton Lane  
Abingdon Science Park  
Abingdon, OX14 3NB, United Kingdom  
Phone: (44) (0) 1235 529449  
Free Phone: 0800 37 34 15  
Fax: (44) (0) 1235 533420  
info.EMEA@bio-techne.com

### **General Contact Information**

[www.novusbio.com](http://www.novusbio.com)  
Technical Support: nb-technical@bio-techne.com  
Orders: nb-customerservice@bio-techne.com  
General: novus@novusbio.com

### **Products Related to H00005962-M01**

HAF007	Goat anti-Mouse IgG Secondary Antibody [HRP]
NB720-B	Rabbit anti-Mouse IgG (H+L) Secondary Antibody [Biotin]
NBP1-43317-0.5mg	Mouse IgG2b Kappa Light Chain Isotype Control (MG2b)
H00005962-P01-10ug	Recombinant Human Radixin GST (N-Term) Protein

### **Limitations**

This product is for research use only and is not approved for use in humans or in clinical diagnosis. Primary Antibodies are guaranteed for 1 year from date of receipt.

For more information on our 100% guarantee, please visit [www.novusbio.com/guarantee](http://www.novusbio.com/guarantee)

Earn gift cards/discounts by submitting a review: [www.novusbio.com/reviews/submit/H00005962-M01](http://www.novusbio.com/reviews/submit/H00005962-M01)

Earn gift cards/discounts by submitting a publication using this product:  
[www.novusbio.com/publications](http://www.novusbio.com/publications)

