

# Product Datasheet

## PSMA1 Antibody (1D9-1C7) - Azide and BSA Free H00005682-M01

Unit Size: 0.1 mg

Aliquot and store at -20C or -80C. Avoid freeze-thaw cycles.

[www.novusbio.com](http://www.novusbio.com)



[technical@novusbio.com](mailto:technical@novusbio.com)

### Publications: 2

Protocols, Publications, Related Products, Reviews, Research Tools and Images at:  
[www.novusbio.com/H00005682-M01](http://www.novusbio.com/H00005682-M01)

Updated 2/21/2025 v.20.1

Earn rewards for product  
reviews and publications.

Submit a publication at [www.novusbio.com/publications](http://www.novusbio.com/publications)

Submit a review at [www.novusbio.com/reviews/destination/H00005682-M01](http://www.novusbio.com/reviews/destination/H00005682-M01)



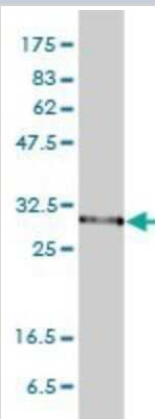
**H00005682-M01**

PSMA1 Antibody (1D9-1C7) - Azide and BSA Free

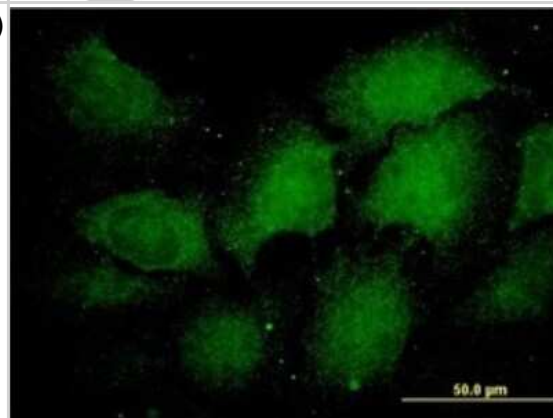
Product Information	
Unit Size	0.1 mg
Concentration	Concentrations vary lot to lot. See vial label for concentration. If unlisted please contact technical services.
Storage	Aliquot and store at -20C or -80C. Avoid freeze-thaw cycles.
Clonality	Monoclonal
Clone	1D9-1C7
Preservative	No Preservative
Isotype	IgG1 Kappa
Purity	IgG purified
Buffer	In 1x PBS, pH 7.4
Product Description	
Description	Quality control test: Antibody Reactive Against Recombinant Protein.
Host	Mouse
Gene ID	5682
Gene Symbol	PSMA1
Species	Human
Specificity/Sensitivity	PSMA1 - proteasome (prosome, macropain) subunit, alpha type, 1
Immunogen	PSMA1 (AAH02577, 1 a.a. ~ 263 a.a) full-length recombinant protein with GST tag. MW of the GST tag alone is 26 KDa. MFRNQYDNDVTWSPQGRIHQIEYAMEAVKQGSATVGLKSKTHAVLVALKRA QSELAAHQKKILHVDNHIGISIAGLTADARLLCNFMRQECLDSRFVFDRPLPVS LVSLIGSKTQIPTQRYGRRPYGVLLIAGYDDMGPHIFQTCPSANYFDCRAMSI GARSQSARTYLERHMSEFMENLNLVKGHLRALRETLPAEQDLTTKNVSI GKDLFTIYDDDDVSPFLEGLEERPQRKAQPAQPADEPAEKADPEMEH
Notes	This product is produced by and distributed for Abnova, a company based in Taiwan.
Product Application Details	
Applications	Western Blot, ELISA, Immunocytochemistry/ Immunofluorescence, Knockdown Validated
Recommended Dilutions	Western Blot 1:500, ELISA, Immunocytochemistry/ Immunofluorescence, Knockdown Validated
Application Notes	Antibody reactivity against cell lysate and recombinant protein for WB. It has also been used for IF, RNAi Validation and ELISA.

## Images

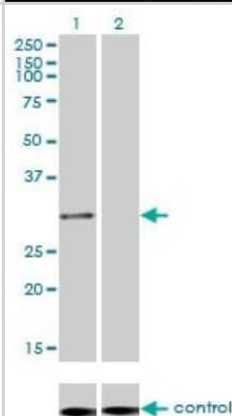
Western Blot: PSMA1 Antibody (1D9-1C7) [H00005682-M01] - PSMA1 monoclonal antibody (M01), clone 1D9-1C7 Analysis of PSMA1 expression in HeLa.



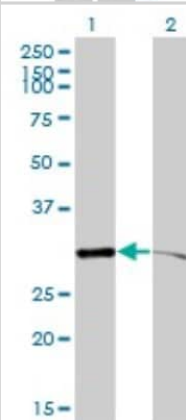
Immunocytochemistry/Immunofluorescence: PSMA1 Antibody (1D9-1C7) [H00005682-M01] - Analysis of monoclonal antibody to PSMA1 on HeLa cell. Antibody concentration 60 ug/ml.



Western Blot: PSMA1 Antibody (1D9-1C7) [H00005682-M01] - Analysis of PSMA1 over-expressed 293 cell line, cotransfected with PSMA1 Validated Chimera RNAi ( Cat # H00005682-R01V ) (Lane 2) or non-transfected control (Lane 1). Blot probed with PSMA1 monoclonal antibody (M01), clone 1D9-1C7 (Cat # H00005682-M01 ). GAPDH ( 36.1 kDa ) used as specificity and loading control.



Western Blot: PSMA1 Antibody (1D9-1C7) [H00005682-M01] - Analysis of PSMA1 expression in transfected 293T cell line by PSMA1 monoclonal antibody (M01), clone 1D9-1C7. Lane 1: PSMA1 transfected lysate(30.2 KDa). Lane 2: Non-transfected lysate.



## Publications

Halbert D, Domenyuk V, Spetzler D et al. Aptamers and uses thereof United States Patent Application US 9958448 B2 2018-01-01

Ma Q, Geng Y, Xu W et al. The Role of Translationally Controlled Tumor Protein in Tumor Growth and Metastasis of Colon Adenocarcinoma Cells. J Proteome Res. 2009-08-11 [PMID: 19621893]





### **Novus Biologicals USA**

10730 E. Briarwood Avenue  
Centennial, CO 80112  
USA  
Phone: 303.730.1950  
Toll Free: 1.888.506.6887  
Fax: 303.730.1966  
nb-customerservice@bio-techne.com

### **Bio-Techne Canada**

21 Canmotor Ave  
Toronto, ON M8Z 4E6  
Canada  
Phone: 905.827.6400  
Toll Free: 855.668.8722  
Fax: 905.827.6402  
canada.inquires@bio-techne.com

### **Bio-Techne Ltd**

19 Barton Lane  
Abingdon Science Park  
Abingdon, OX14 3NB, United Kingdom  
Phone: (44) (0) 1235 529449  
Free Phone: 0800 37 34 15  
Fax: (44) (0) 1235 533420  
info.EMEA@bio-techne.com

### **General Contact Information**

www.novusbio.com  
Technical Support: nb-technical@bio-techne.com  
Orders: nb-customerservice@bio-techne.com  
General: novus@novusbio.com

### **Products Related to H00005682-M01**

---

HAF007	Goat anti-Mouse IgG Secondary Antibody [HRP]
NB720-B	Rabbit anti-Mouse IgG (H+L) Secondary Antibody [Biotin]
NBP1-43319-0.5mg	Mouse IgG1 Kappa Isotype Control (P3.6.2.8.1)
NBP1-72482-100ug	Recombinant Human PSMA1 His Protein

---

### **Limitations**

This product is for research use only and is not approved for use in humans or in clinical diagnosis. Primary Antibodies are guaranteed for 1 year from date of receipt.

For more information on our 100% guarantee, please visit [www.novusbio.com/guarantee](http://www.novusbio.com/guarantee)

Earn gift cards/discounts by submitting a review: [www.novusbio.com/reviews/submit/H00005682-M01](http://www.novusbio.com/reviews/submit/H00005682-M01)

Earn gift cards/discounts by submitting a publication using this product:  
[www.novusbio.com/publications](http://www.novusbio.com/publications)

