

# Product Datasheet

## Recombinant Human Protamine 1 GST (N-Term) Protein H00005619-P01-2ug

Unit Size: 2 ug

Store at -80C. Avoid freeze-thaw cycles.

[www.novusbio.com](http://www.novusbio.com)



[technical@novusbio.com](mailto:technical@novusbio.com)

### Publications: 2

Protocols, Publications, Related Products, Reviews, Research Tools and Images at:  
[www.novusbio.com/H00005619-P01](http://www.novusbio.com/H00005619-P01)

Updated 10/24/2024 v.20.1

Earn rewards for product  
reviews and publications.

Submit a publication at [www.novusbio.com/publications](http://www.novusbio.com/publications)

Submit a review at [www.novusbio.com/reviews/destination/H00005619-P01](http://www.novusbio.com/reviews/destination/H00005619-P01)



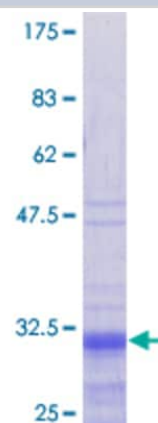
**H00005619-P01-2ug**

## Recombinant Human Protamine 1 GST (N-Term) Protein

Product Information	
Unit Size	2 ug
Concentration	Please see the vial label for concentration. If unlisted please contact technical services.
Storage	Store at -80C. Avoid freeze-thaw cycles.
Preservative	No Preservative
Purity	>80% by SDS-PAGE and Coomassie blue staining
Buffer	50 mM Tris-HCl, 10 mM reduced Glutathione, pH 8.0 in the elution buffer.
Target Molecular Weight	31.35 kDa
Product Description	
Description	<p>A recombinant protein with GST tag at N-terminal corresponding to the amino acids 18629 of Human PRM1</p> <p><b>Source:</b> <i>Wheat Germ (in vitro)</i></p> <p><b>Amino Acid Sequence:</b>  MARYRCCRSQSRSRYRQRQSRRRRRRSCQTRRRAMRCCRPRYRPRCRR  H</p>
Gene ID	5619
Gene Symbol	PRM1
Species	Human
Preparation Method	in vitro wheat germ expression system
Details of Functionality	This protein was produced in an in vitro wheat germ expression system that should preserve correct conformational folding that is necessary for biological function. While it is possible that this protein could display some level of activity, the functionality of this protein has not been explicitly measured or validated.
Notes	This product is produced by and distributed for Abnova, a company based in Taiwan.
Product Application Details	
Applications	Western Blot, ELISA, Protein Array, Immunoaffinity Purification
Recommended Dilutions	Western Blot, ELISA, Protein Array, Immunoaffinity Purification

## Images

Recombinant Human Protamine 1 Protein [H00005619-P01] - 12.5% SDS-PAGE Stained with Coomassie Blue.



## Publications

Simon, Michael R. Composition method for introduction of DNA directed RNA interference sequences into targeted cells tissues. FreshPatents com. 2005-01-01

Kim SS, Peer D, Kumar P et al. RNAi-mediated CCR5 Silencing by LFA-1-targeted Nanoparticles Prevents HIV Infection in BLT Mice. *Mol Ther*;18(2):370-6. 2010-02-01 [PMID: 19997090]



### **Novus Biologicals USA**

10730 E. Briarwood Avenue  
Centennial, CO 80112  
USA  
Phone: 303.730.1950  
Toll Free: 1.888.506.6887  
Fax: 303.730.1966  
nb-customerservice@bio-techne.com

### **Bio-Techne Canada**

21 Canmotor Ave  
Toronto, ON M8Z 4E6  
Canada  
Phone: 905.827.6400  
Toll Free: 855.668.8722  
Fax: 905.827.6402  
canada.inquires@bio-techne.com

### **Bio-Techne Ltd**

19 Barton Lane  
Abingdon Science Park  
Abingdon, OX14 3NB, United Kingdom  
Phone: (44) (0) 1235 529449  
Free Phone: 0800 37 34 15  
Fax: (44) (0) 1235 533420  
info.EMEA@bio-techne.com

### **General Contact Information**

www.novusbio.com  
Technical Support: nb-technical@bio-techne.com  
Orders: nb-customerservice@bio-techne.com  
General: novus@novusbio.com

### **Limitations**

This product is for research use only and is not approved for use in humans or in clinical diagnosis. Peptides and proteins are guaranteed for 3 months from date of receipt.

For more information on our 100% guarantee, please visit [www.novusbio.com/guarantee](http://www.novusbio.com/guarantee)

Earn gift cards/discounts by submitting a review: [www.novusbio.com/reviews/submit/H00005619-P01](http://www.novusbio.com/reviews/submit/H00005619-P01)

Earn gift cards/discounts by submitting a publication using this product:  
[www.novusbio.com/publications](http://www.novusbio.com/publications)

