

Product Datasheet

CITED1 Antibody (5H6) - Azide and BSA Free H00004435-M03

Unit Size: 0.1 mg

Aliquot and store at -20C or -80C. Avoid freeze-thaw cycles.

www.novusbio.com



technical@novusbio.com

Reviews: 2 Publications: 3

Protocols, Publications, Related Products, Reviews, Research Tools and Images at:
www.novusbio.com/H00004435-M03

Updated 2/21/2025 v.20.1

Earn rewards for product
reviews and publications.

Submit a publication at www.novusbio.com/publications

Submit a review at www.novusbio.com/reviews/destination/H00004435-M03



H00004435-M03

CITED1 Antibody (5H6) - Azide and BSA Free

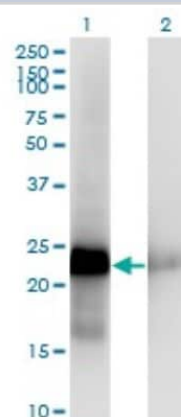
Product Information	
Unit Size	0.1 mg
Concentration	Concentrations vary lot to lot. See vial label for concentration. If unlisted please contact technical services.
Storage	Aliquot and store at -20C or -80C. Avoid freeze-thaw cycles.
Clonality	Monoclonal
Clone	5H6
Preservative	No Preservative
Isotype	IgG2a Kappa
Purity	IgG purified
Buffer	In 1x PBS, pH 7.4

Product Description	
Description	Quality control test: Antibody Reactive Against Recombinant Protein.
Host	Mouse
Gene ID	4435
Gene Symbol	CITED1
Species	Human
Immunogen	CITED1 (NP_004134, 94 a.a. ~ 193 a.a) partial recombinant protein with GST tag. MW of the GST tag alone is 26 KDa. SMQLQKLNSQYQGMAAATPGQPGEAGPLQNWDFGAQAGGAESLSPSAGAAQ SPAIIDSDPVDEEVLM SLVVELGLDRANELPELWLGQNEFDFTADFPSSC
Notes	This product is produced by and distributed for Abnova, a company based in Taiwan.

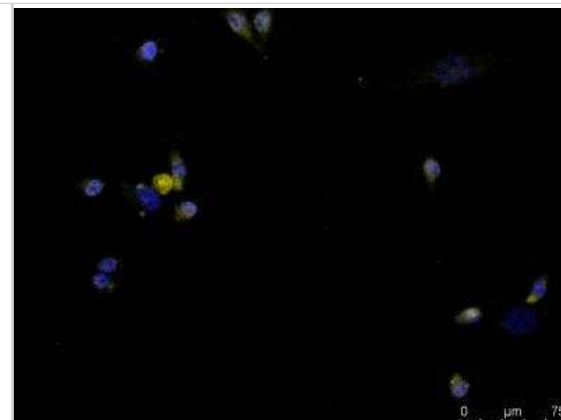
Product Application Details	
Applications	Western Blot, ELISA, Flow Cytometry, Immunocytochemistry/ Immunofluorescence, Immunohistochemistry, Immunohistochemistry-Paraffin
Recommended Dilutions	Western Blot 1:500, Flow Cytometry 1:10-1:1000, ELISA, Immunohistochemistry 1:10-1:500, Immunocytochemistry/ Immunofluorescence, Immunohistochemistry-Paraffin 1:10-1:500
Application Notes	FACS usage reported in scientific literature (PMID: 24349133).

Images

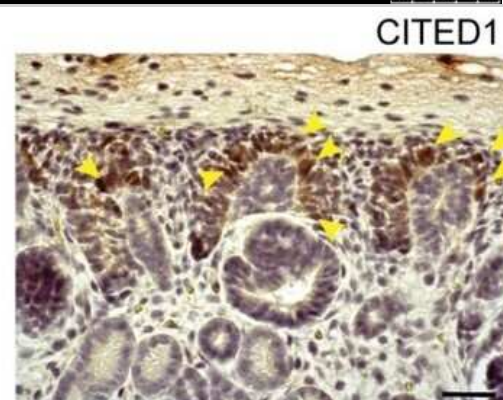
Western Blot: CITED1 Antibody (5H6) [H00004435-M03] - Analysis of CITED1 expression in transfected 293T cell line by CITED1 monoclonal antibody (M03), clone 5H6. Lane 1: CITED1 transfected lysate (19.9 KDa). Lane 2: Non-transfected lysate.



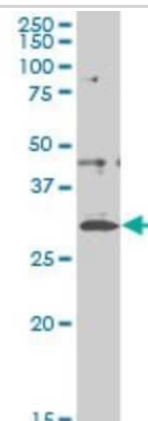
Immunocytochemistry/Immunofluorescence: CITED1 Antibody (5H6) [H00004435-M03] - analysis of CITED1 expression in human embryonic kidney cells using anti-CITED1 antibody. Image from verified customer review.



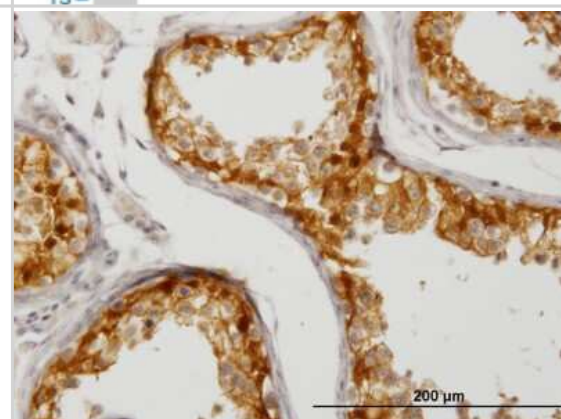
Immunohistochemistry: CITED1 Antibody (5H6) [H00004435-M03] - Representative image of CITED1 immunostaining. Arrowheads indicate the presence of immunostaining signal. Scale bar = 100 μm. Image collected and cropped by CiteAb from the following publication ([//pubmed.ncbi.nlm.nih.gov/30789893/](https://pubmed.ncbi.nlm.nih.gov/30789893/)) licensed under a CC-BY license.



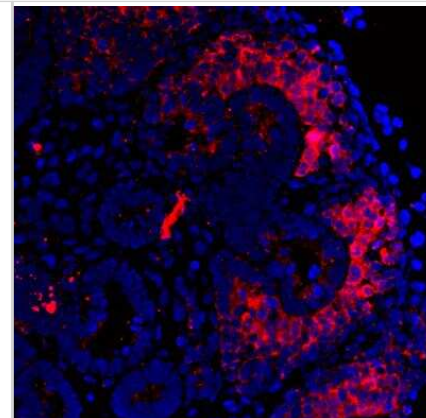
Western Blot: CITED1 Antibody (5H6) [H00004435-M03] - Analysis of CITED1 expression in A-431 (Cat # L015V1).



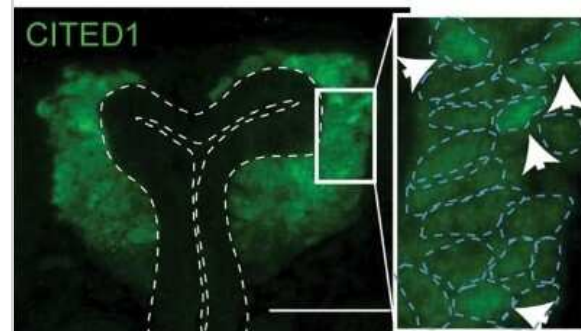
Immunohistochemistry-Paraffin: CITED1 Antibody (5H6) [H00004435-M03] - Analysis of monoclonal antibody to CITED1 on formalin-fixed paraffin-embedded human testis. Antibody concentration 1.2 μg/ml



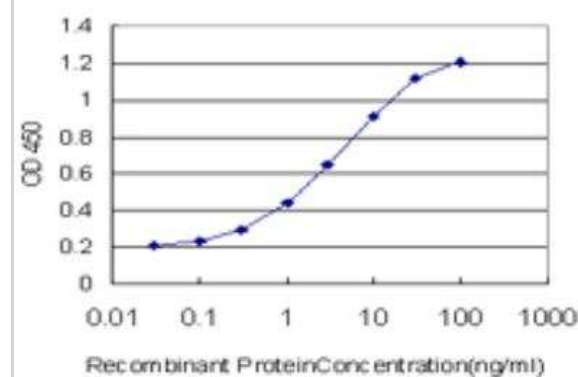
Immunohistochemistry-Paraffin: CITED1 Antibody (5H6) [H00004435-M03] - Analysis of CITED1 on paraffin embedded human fetal renal tissue. Image from verified customer review.



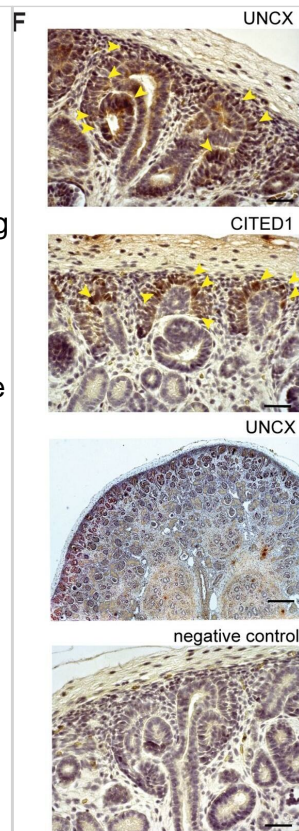
Immunohistochemistry: CITED1 Antibody (5H6) [H00004435-M03] - Representative image of CITED1 immunostaining in a w15 human fetal kidney. Dashed lines in the insets indicate the outline of the nuclei, based on DAPI signal. Arrows in the inset point to cells in which CITED1 is concentrated in the nucleus. Scale bar = 50 μ m. Image collected and cropped by CiteAb from the following publication (<https://pubmed.ncbi.nlm.nih.gov/30789893/>) licensed under a CC-BY license.



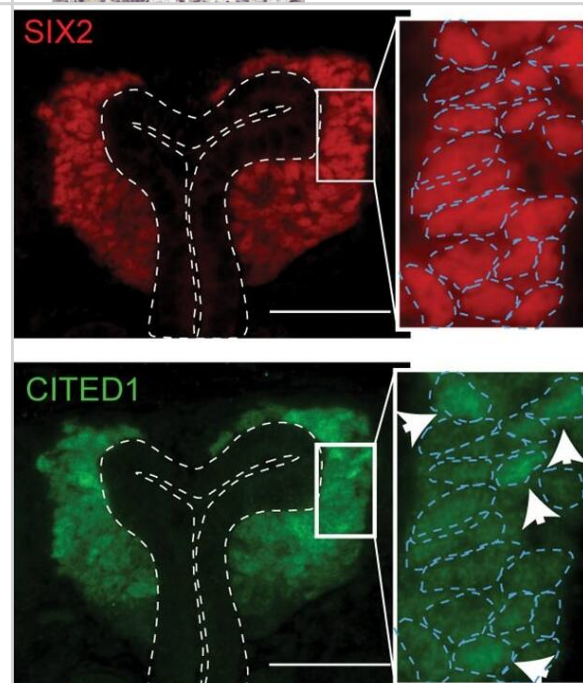
ELISA: CITED1 Antibody (5H6) [H00004435-M03] - Detection limit for recombinant GST tagged CITED1 is approximately 0.03ng/ml as a capture antibody.



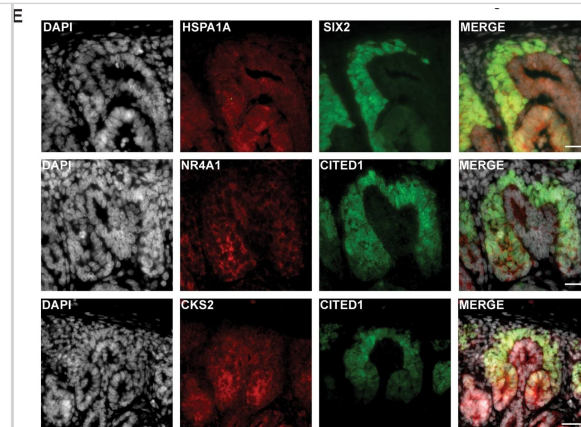
Immunohistochemistry: CITED1 Antibody (5H6) [H00004435-M03] - The nephrogenic niche exhibited a complex spatial organization. (A) Pseudotime analysis of the nephrogenic niche (NPC) & the PTA. Two-dimensional DDRTree [18] embedding & the learned graph (shown as a black line) were calculated with Monocle 2 [17]. Labels & colors indicate cell types. (B) Schematic sketch of the CM indicating the distance d from the UB to the edge of the CM (solid arrow) & the relative distance s along the UB (dashed arrow), in which 0 & 1 represent the top & bottom of the CM, respectively. (C) Representative image of SIX2 & CITED1 immunostaining in a w15 human fetal kidney. Dashed lines in the insets indicate the outline of the nuclei, based on DAPI signal. Arrows in the inset point to cells in which CITED1 is concentrated in the nucleus. Scale bar = 50 μm . (D) Quantification of SIX2 & CITED1 immunostaining with respect to the distance d from UB or distance s along the UB; see panel A. Error bars indicate the SEM calculated over all evaluated profiles ($n = 24$). (E) Representative image of HSPA1A, NR4A1, & CKS2 immunostaining in a w15 human fetal kidney. Scale bar = 20 μm . (F) Representative image of UNCX & CITED1 immunostaining. Arrowheads indicate the presence of immunostaining signal. Scale bar = 100 μm . The numerical data underlying this figure can be found in S1 Data. CM, cap mesenchyme; NPC, nephron progenitor cell; PTA, pretubular aggregate; SEM, standard error of the mean; UB, ureteric bud; w15, week 15. Image collected & cropped by CiteAb from the following publication (<https://pubmed.ncbi.nlm.nih.gov/30789893>), licensed under a CC-BY license. Not internally tested by Novus Biologicals.



Immunocytochemistry/ Immunofluorescence: CITED1 Antibody (5H6) [H00004435-M03] - The nephrogenic niche exhibited a complex spatial organization. (A) Pseudotime analysis of the nephrogenic niche (NPC) & the PTA. Two-dimensional DDRTree [18] embedding & the learned graph (shown as a black line) were calculated with Monocle 2 [17]. Labels & colors indicate cell types. (B) Schematic sketch of the CM indicating the distance d from the UB to the edge of the CM (solid arrow) & the relative distance s along the UB (dashed arrow), in which 0 & 1 represent the top & bottom of the CM, respectively. (C) Representative image of SIX2 & CITED1 immunostaining in a w15 human fetal kidney. Dashed lines in the insets indicate the outline of the nuclei, based on DAPI signal. Arrows in the inset point to cells in which CITED1 is concentrated in the nucleus. Scale bar = 50 μm . (D) Quantification of SIX2 & CITED1 immunostaining with respect to the distance d from UB or distance s along the UB; see panel A. Error bars indicate the SEM calculated over all evaluated profiles ($n = 24$). (E) Representative image of HSPA1A, NR4A1, & CKS2 immunostaining in a w15 human fetal kidney. Scale bar = 20 μm . (F) Representative image of UNCX & CITED1 immunostaining. Arrowheads indicate the presence of immunostaining signal. Scale bar = 100 μm . The numerical data underlying this figure can be found in S1 Data. CM, cap mesenchyme; NPC, nephron progenitor cell; PTA, pretubular aggregate; SEM, standard error of the mean; UB, ureteric bud; w15, week 15. Image collected & cropped by CiteAb from the following publication (<https://pubmed.ncbi.nlm.nih.gov/30789893>), licensed under a CC-BY license. Not internally tested by Novus Biologicals.



Immunocytochemistry/ Immunofluorescence: CITED1 Antibody (5H6) [H00004435-M03] - The nephrogenic niche exhibited a complex spatial organization. (A) Pseudotime analysis of the nephrogenic niche (NPC) & the PTA. Two-dimensional DDRTree [18] embedding & the learned graph (shown as a black line) were calculated with Monocle 2 [17]. Labels & colors indicate cell types. (B) Schematic sketch of the CM indicating the distance d from the UB to the edge of the CM (solid arrow) & the relative distance s along the UB (dashed arrow), in which 0 & 1 represent the top & bottom of the CM, respectively. (C) Representative image of SIX2 & CITED1 immunostaining in a w15 human fetal kidney. Dashed lines in the insets indicate the outline of the nuclei, based on DAPI signal. Arrows in the inset point to cells in which CITED1 is concentrated in the nucleus. Scale bar = 50 μm . (D) Quantification of SIX2 & CITED1 immunostaining with respect to the distance d from UB or distance s along the UB; see panel A. Error bars indicate the SEM calculated over all evaluated profiles ($n = 24$). (E) Representative image of HSPA1A, NR4A1, & CKS2 immunostaining in a w15 human fetal kidney. Scale bar = 20 μm . (F) Representative image of UNCX & CITED1 immunostaining. Arrowheads indicate the presence of immunostaining signal. Scale bar = 100 μm . The numerical data underlying this figure can be found in S1 Data. CM, cap mesenchyme; NPC, nephron progenitor cell; PTA, pretubular aggregate; SEM, standard error of the mean; UB, ureteric bud; w15, week 15. Image collected & cropped by CiteAb from the following publication (<https://pubmed.ncbi.nlm.nih.gov/30789893>), licensed under a CC-BY license. Not internally tested by Novus Biologicals.



Publications

- Hochane M, van den Berg PR, Fan X et al. Single-cell transcriptomics reveals gene expression dynamics of human fetal kidney development PLoS Biol. 2019-02-21 [PMID: 30789893] (IHC-P, ICC/IF, Human)
- Capel E, Vazier C, Cervera P et al. MFN2-associated lipomatosis: Clinical spectrum and impact on adipose tissue J Clin Lipidol 2018-07-25 [PMID: 30158064] (WB, IHC-P, Human)
- Da Sacco S, Lemley KV, Sedrakyan S et al. A Novel Source of Cultured Podocytes. PLoS One 2013-12-12 [PMID: 24349133] (FLOW, Human)



Novus Biologicals USA

10730 E. Briarwood Avenue
Centennial, CO 80112
USA
Phone: 303.730.1950
Toll Free: 1.888.506.6887
Fax: 303.730.1966
nb-customerservice@bio-techne.com

Bio-Techne Canada

21 Canmotor Ave
Toronto, ON M8Z 4E6
Canada
Phone: 905.827.6400
Toll Free: 855.668.8722
Fax: 905.827.6402
canada.inquires@bio-techne.com

Bio-Techne Ltd

19 Barton Lane
Abingdon Science Park
Abingdon, OX14 3NB, United Kingdom
Phone: (44) (0) 1235 529449
Free Phone: 0800 37 34 15
Fax: (44) (0) 1235 533420
info.EMEA@bio-techne.com

General Contact Information

www.novusbio.com
Technical Support: nb-technical@bio-techne.com
Orders: nb-customerservice@bio-techne.com
General: novus@novusbio.com

Products Related to H00004435-M03

HAF007	Goat anti-Mouse IgG Secondary Antibody [HRP]
NB720-B	Rabbit anti-Mouse IgG (H+L) Secondary Antibody [Biotin]
NBP1-96981-0.5mg	Mouse IgG2a Kappa Isotype Control (M2AK)
NBP2-55317PEP	CITED1 Recombinant Protein Antigen

Limitations

This product is for research use only and is not approved for use in humans or in clinical diagnosis. Primary Antibodies are guaranteed for 1 year from date of receipt.

For more information on our 100% guarantee, please visit www.novusbio.com/guarantee

Earn gift cards/discounts by submitting a review: www.novusbio.com/reviews/submit/H00004435-M03

Earn gift cards/discounts by submitting a publication using this product:
www.novusbio.com/publications

