

Product Datasheet

MeCP2 Antibody (4B6) - Azide and BSA Free H00004204-M01

Unit Size: 0.1 mg

Aliquot and store at -20C or -80C. Avoid freeze-thaw cycles.

www.novusbio.com



technical@novusbio.com

Publications: 2

Protocols, Publications, Related Products, Reviews, Research Tools and Images at:
www.novusbio.com/H00004204-M01

Updated 2/21/2025 v.20.1

Earn rewards for product
reviews and publications.

Submit a publication at www.novusbio.com/publications

Submit a review at www.novusbio.com/reviews/destination/H00004204-M01



H00004204-M01

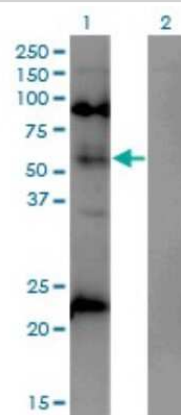
MeCP2 Antibody (4B6) - Azide and BSA Free

Product Information	
Unit Size	0.1 mg
Concentration	Concentrations vary lot to lot. See vial label for concentration. If unlisted please contact technical services.
Storage	Aliquot and store at -20C or -80C. Avoid freeze-thaw cycles.
Clonality	Monoclonal
Clone	4B6
Preservative	No Preservative
Isotype	IgG2a Kappa
Purity	IgG purified
Buffer	In 1x PBS, pH 7.4
Product Description	
Description	Quality control test: Antibody Reactive Against Recombinant Protein.
Host	Mouse
Gene ID	4204
Gene Symbol	MECP2
Species	Human, Mouse, Rat
Reactivity Notes	Please note that this antibody is reactive to Mouse and derived from the same host, Mouse. Additional Mouse on Mouse blocking steps may be required for IHC and ICC experiments. Please contact Technical Support for more information.
Marker	Nucleus Marker
Specificity/Sensitivity	MECP2 - methyl CpG binding protein 2 (Rett syndrome)
Immunogen	MECP2 (AAH11612, 81 a.a. ~ 170 a.a) partial recombinant protein with GST tag. MW of the GST tag alone is 26 KDa. PKQRRSIIRDGRGPMYDDPTLPEGWTRKLRKSRGSRGKYDVYLINPQGKA FRSKVELIAYFEKVGDTSLDPNDFDFTVTGRGSPSRREQ
Notes	This product is produced by and distributed for Abnova, a company based in Taiwan.
Product Application Details	
Applications	Western Blot, ELISA, Immunohistochemistry, Immunohistochemistry-Paraffin, Sandwich ELISA
Recommended Dilutions	Western Blot 1:500, ELISA, Immunohistochemistry 1:10-1:500, Immunohistochemistry-Paraffin 1:10-1:500, Sandwich ELISA 1:100-1:2000
Application Notes	Antibody reactivity against cell lysate and recombinant protein for WB. It has also been used for IHC-P and ELISA.

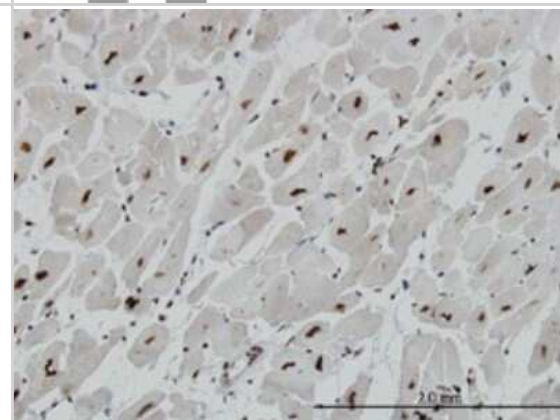


Images

Western Blot: MeCP2 Antibody (4B6) [H00004204-M01] - Analysis of MECP2 expression in transfected 293T cell line by MECP2 monoclonal antibody (M01), clone 4B6. Lane 1: MECP2 transfected lysate(52.4 KDa). Lane 2: Non-transfected lysate.



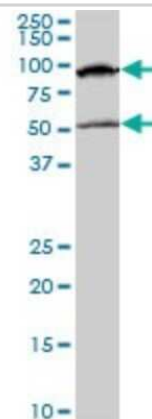
Immunohistochemistry-Paraffin: MeCP2 Antibody (4B6) [H00004204-M01] - Analysis of monoclonal antibody to MECP2 on formalin-fixed paraffin-embedded human heart. Antibody concentration 3 ug/ml.



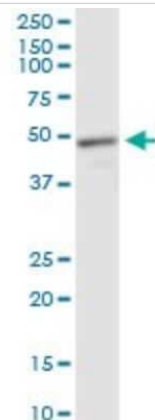
Western Blot: MeCP2 Antibody (4B6) [H00004204-M01] - MECP2 monoclonal antibody (M01), clone 4B6 Analysis of MECP2 expression in MCF-7.



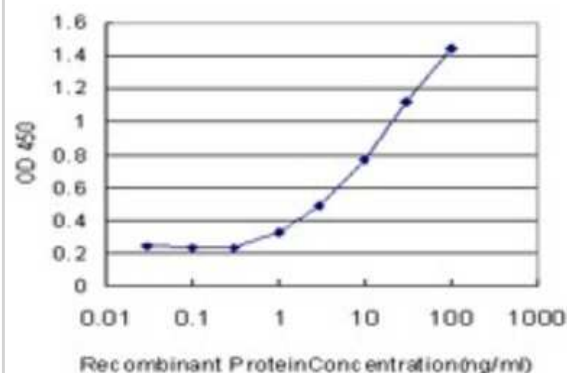
Western Blot: MeCP2 Antibody (4B6) [H00004204-M01] - MECP2 monoclonal antibody (M01), clone 4B6. Analysis of MECP2 expression in NIH/3T3.



Western Blot: MeCP2 Antibody (4B6) [H00004204-M01] - MECP2 monoclonal antibody (M01), clone 4B6. Analysis of MECP2 expression in rat muscle.



Sandwich ELISA: MeCP2 Antibody (4B6) [H00004204-M01] - Detection limit for recombinant GST tagged MECP2 is approximately 1ng/ml as a capture antibody.



Publications

Bueno C, Tabares-Seisdedos R, Moraleda JM, Martinez S Rett Syndrome Mutant Neural Cells Lacks MeCP2 Immunoreactive Bands. PLoS One 2016-04-11 [PMID: 27064487]

Tai DJ, Liu YC, Hsu WL et al. MeCP2 SUMOylation rescues Mecp2-mutant-induced behavioural deficits in a mouse model of Rett syndrome. Nat Commun 2016-02-04 [PMID: 26842955] (WB)



Novus Biologicals USA

10730 E. Briarwood Avenue
Centennial, CO 80112
USA
Phone: 303.730.1950
Toll Free: 1.888.506.6887
Fax: 303.730.1966
nb-customerservice@bio-techne.com

Bio-Techne Canada

21 Canmotor Ave
Toronto, ON M8Z 4E6
Canada
Phone: 905.827.6400
Toll Free: 855.668.8722
Fax: 905.827.6402
canada.inquires@bio-techne.com

Bio-Techne Ltd

19 Barton Lane
Abingdon Science Park
Abingdon, OX14 3NB, United Kingdom
Phone: (44) (0) 1235 529449
Free Phone: 0800 37 34 15
Fax: (44) (0) 1235 533420
info.EMEA@bio-techne.com

General Contact Information

www.novusbio.com
Technical Support: nb-technical@bio-techne.com
Orders: nb-customerservice@bio-techne.com
General: novus@novusbio.com

Products Related to H00004204-M01

HAF007	Goat anti-Mouse IgG Secondary Antibody [HRP]
NB720-B	Rabbit anti-Mouse IgG (H+L) Secondary Antibody [Biotin]
NBP1-96981-0.5mg	Mouse IgG2a Kappa Isotype Control (M2AK)
H00004204-Q01-10ug	Recombinant Human MeCP2 GST (N-Term) Protein

Limitations

This product is for research use only and is not approved for use in humans or in clinical diagnosis. Primary Antibodies are guaranteed for 1 year from date of receipt.

For more information on our 100% guarantee, please visit www.novusbio.com/guarantee

Earn gift cards/discounts by submitting a review: www.novusbio.com/reviews/submit/H00004204-M01

Earn gift cards/discounts by submitting a publication using this product:
www.novusbio.com/publications

