

Product Datasheet

Laminin alpha 5 Antibody (2F7) - Azide and BSA Free H00003911-M01

Unit Size: 0.1 mg

Aliquot and store at -20C or -80C. Avoid freeze-thaw cycles.

www.novusbio.com



technical@novusbio.com

Publications: 9

Protocols, Publications, Related Products, Reviews, Research Tools and Images at:
www.novusbio.com/H00003911-M01

Updated 2/21/2025 v.20.1

Earn rewards for product
reviews and publications.

Submit a publication at www.novusbio.com/publications

Submit a review at www.novusbio.com/reviews/destination/H00003911-M01



H00003911-M01

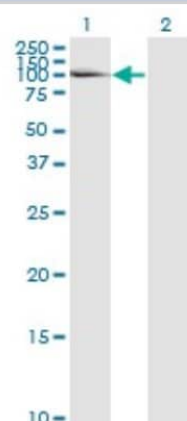
Laminin alpha 5 Antibody (2F7) - Azide and BSA Free

Product Information	
Unit Size	0.1 mg
Concentration	Concentrations vary lot to lot. See vial label for concentration. If unlisted please contact technical services.
Storage	Aliquot and store at -20C or -80C. Avoid freeze-thaw cycles.
Clonality	Monoclonal
Clone	2F7
Preservative	No Preservative
Isotype	IgG1 Kappa
Purity	IgG purified
Buffer	In 1x PBS, pH 7.4
Product Description	
Description	Quality control test: Antibody Reactive Against Recombinant Protein.
Host	Mouse
Gene ID	3911
Gene Symbol	LAMA5
Species	Human
Specificity/Sensitivity	LAMA5 - laminin, alpha 5
Immunogen	LAMA5 (AAH03355.1, 1 a.a. ~ 100 a.a) partial recombinant protein with GST tag. MW of the GST tag alone is 26 KDa. MGVSLRDKKVVHWVYQLGEAGPAVLSIDEDIGEQFAAVSLDRTLQFGHMSVTVE RQMIQETKGDTVAPGAEGLLNLRPDDFVFYVGGYPSTFTPPPLLRFP
Notes	This product is produced by and distributed for Abnova, a company based in Taiwan.
Product Application Details	
Applications	Western Blot, ELISA, Immunohistochemistry-Paraffin
Recommended Dilutions	Western Blot 1:500, ELISA, Immunohistochemistry-Paraffin
Application Notes	Antibody reactivity against Recombinant Protein with GST tag on ELISA and WB. GST tag alone is used as a negative control. Use in Immunocytochemistry/immunofluorescence reported in scientific literature (PMID: 31091437). Use in Immunohistochemistry-paraffin reported in scientific literature (PMID: 21195710).

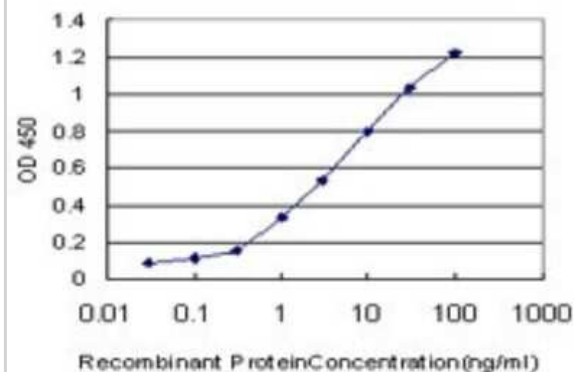


Images

Western Blot: Laminin alpha 5 Antibody (2F7) [H00003911-M01] - Analysis of LAMA5 expression in transfected 293T cell line by LAMA5 monoclonal antibody (M01), clone 2F7. Lane 1: LAMA5 transfected lysate (74 KDa). Lane 2: Non-transfected lysate.



ELISA: Laminin alpha 5 Antibody (2F7) [H00003911-M01] - Detection limit for recombinant GST tagged LAMA5 is approximately 0.03ng/ml as a capture antibody.



Publications

- Hwee T, Helder A, Vicki C et al. Photoreceptor laminin drives differentiation of human pluripotent stem cells to photoreceptor progenitors that partially restore retina function. *Mol Ther*. 2023-01-05 [PMID: 36638800]
- Little G, Noushmehr H, Baniwal S et al. Genome-wide Runx2 occupancy in prostate cancer cells suggests a role in regulating secretion. *Nucleic Acids Res*. 2011-12-19 [PMID: 22187159]
- Maynard DM, Heijnen HF, Horne MK Proteomic analysis of platelet alpha-granules using mass spectrometry. *J Thromb Haemost*. 2007-09-01 [PMID: 17723134] (IHC-P, Human)
- Wu HY, Chang YH, Chang YC, Liao PC et al. Proteomics analysis of nasopharyngeal carcinoma cell secretome using a hollow fiber culture system and mass spectrometry. *J Proteome Res*. 2009-01-01 [PMID: 19012429] (WB, Human)
- Oikawa Y, Hansson J, Sasaki T et al. Melanoma cells produce multiple laminin isoforms and strongly migrate on $\alpha 5$ laminin(s) via several integrin receptors *Exp Cell Res*. 2011-05-01 [PMID: 21195710] (IHC-P, Human)
- Little GH, Noushmehr H, Baniwal SK Genome-wide Runx2 occupancy in prostate cancer cells suggests a role in regulating secretion *Nucleic Acids Res*. 2012-04-01 [PMID: 27490379] (WB, Human)
- Evans R, Flores-Borja F, Nassiri S Integrin-Mediated Macrophage Adhesion Promotes Lymphovascular Dissemination in Breast Cancer *Cell Rep* May 14 2019 12:00AM [PMID: 31091437] (ICC/IF, Mouse, Human)
- Little GH, Noushmehr H, Baniwal SK Genome-wide Runx2 occupancy in prostate cancer cells suggests a role in regulating secretion *Nucleic Acids Res*. 2012-04-01 [PMID: 27490379] (WB, Human)
- Little GH, Noushmehr H, Baniwal SK et al. Genome-wide Runx2 occupancy in prostate cancer cells suggests a role in regulating secretion. *Nucleic Acids Res*. 2011 Dec 19 [PMID: 22187159]



Novus Biologicals USA

10730 E. Briarwood Avenue
Centennial, CO 80112
USA
Phone: 303.730.1950
Toll Free: 1.888.506.6887
Fax: 303.730.1966
nb-customerservice@bio-techne.com

Bio-Techne Canada

21 Canmotor Ave
Toronto, ON M8Z 4E6
Canada
Phone: 905.827.6400
Toll Free: 855.668.8722
Fax: 905.827.6402
canada.inquires@bio-techne.com

Bio-Techne Ltd

19 Barton Lane
Abingdon Science Park
Abingdon, OX14 3NB, United Kingdom
Phone: (44) (0) 1235 529449
Free Phone: 0800 37 34 15
Fax: (44) (0) 1235 533420
info.EMEA@bio-techne.com

General Contact Information

www.novusbio.com
Technical Support: nb-technical@bio-techne.com
Orders: nb-customerservice@bio-techne.com
General: novus@novusbio.com

Products Related to H00003911-M01

HAF007	Goat anti-Mouse IgG Secondary Antibody [HRP]
NB720-B	Rabbit anti-Mouse IgG (H+L) Secondary Antibody [Biotin]
NBP1-43319-0.5mg	Mouse IgG1 Kappa Isotype Control (P3.6.2.8.1)
H00003911-Q01-10ug	Recombinant Human Laminin alpha 5 GST (N-Term) Protein

Limitations

This product is for research use only and is not approved for use in humans or in clinical diagnosis. Primary Antibodies are guaranteed for 1 year from date of receipt.

For more information on our 100% guarantee, please visit www.novusbio.com/guarantee

Earn gift cards/discounts by submitting a review: www.novusbio.com/reviews/submit/H00003911-M01

Earn gift cards/discounts by submitting a publication using this product:
www.novusbio.com/publications

