

Product Datasheet

KIFC1 Antibody (2B9) - Azide and BSA Free H00003833-M01

Unit Size: 0.1 mg

Aliquot and store at -20C or -80C. Avoid freeze-thaw cycles.

www.novusbio.com



technical@novusbio.com

Publications: 5

Protocols, Publications, Related Products, Reviews, Research Tools and Images at:
www.novusbio.com/H00003833-M01

Updated 2/21/2025 v.20.1

Earn rewards for product
reviews and publications.

Submit a publication at www.novusbio.com/publications

Submit a review at www.novusbio.com/reviews/destination/H00003833-M01



H00003833-M01

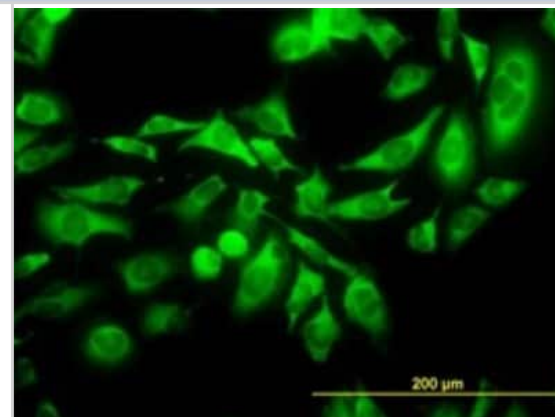
KIFC1 Antibody (2B9) - Azide and BSA Free

Product Information	
Unit Size	0.1 mg
Concentration	Concentrations vary lot to lot. See vial label for concentration. If unlisted please contact technical services.
Storage	Aliquot and store at -20C or -80C. Avoid freeze-thaw cycles.
Clonality	Monoclonal
Clone	2B9
Preservative	No Preservative
Isotype	IgG2a Kappa
Purity	IgG purified
Buffer	In 1x PBS, pH 7.4
Product Description	
Description	Quality control test: Antibody Reactive Against Recombinant Protein.
Host	Mouse
Gene ID	3833
Gene Symbol	KIFC1
Species	Human
Specificity/Sensitivity	KIFC1 - kinesin family member C1
Immunogen	KIFC1 (AAH00712, 53 a.a. ~ 152 a.a) partial recombinant protein with GST tag. MW of the GST tag alone is 26 KDa. MDPQRSPLLEVKGNIELKRPLIKAPSQLPLSGSRLKRRPDQMEDGLEPEKKRT RGLGATTKITTSHPRVPSLTTVPQTQGQTTAQKVSKKTGPRCSTAIA
Notes	This product is produced by and distributed for Abnova, a company based in Taiwan.
Product Application Details	
Applications	Western Blot, ELISA, Immunocytochemistry/ Immunofluorescence, Immunohistochemistry, Immunohistochemistry-Paraffin
Recommended Dilutions	Western Blot 1:500, ELISA, Immunohistochemistry, Immunocytochemistry/ Immunofluorescence, Immunohistochemistry-Paraffin
Application Notes	Antibody reactivity against recombinant protein for WB. It has also been used for IF, IHC-P and ELISA.

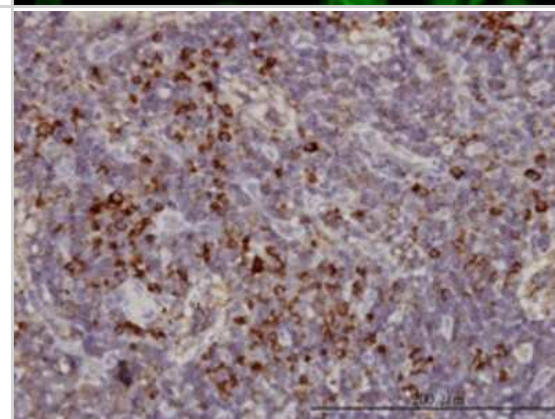


Images

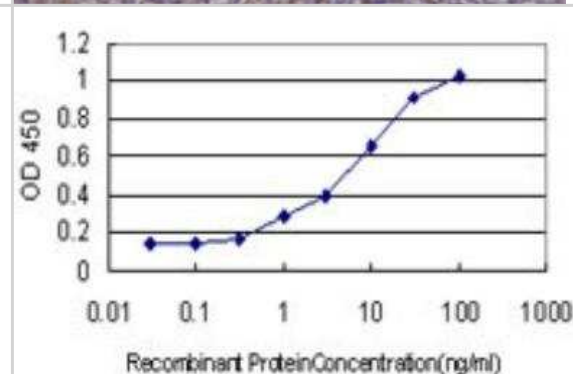
Immunocytochemistry/Immunofluorescence: KIFC1 Antibody (2B9) [H00003833-M01] - Analysis of monoclonal antibody to KIFC1 on HeLa cell. Antibody concentration 10 ug/ml.



Immunohistochemistry-Paraffin: KIFC1 Antibody (2B9) [H00003833-M01] - Analysis of monoclonal antibody to KIFC1 on formalin-fixed paraffin-embedded human lymph node. Antibody concentration 3 ug/ml.



ELISA: KIFC1 Antibody (2B9) [H00003833-M01] - Detection limit for recombinant GST tagged KIFC1 is approximately 1ng/ml as a capture antibody.



Publications

Akira I, Hiroki F, Takafumi F et al. Expression of kinesin family member C1 in pancreatic ductal adenocarcinoma affects tumor progression and stemness. *Pathol Res Pract*. 2022-12-19 [PMID: 36565617]

Sekino Y, Oue N, Koike Y et al. KIFC1 Inhibitor CW069 Induces Apoptosis and Reverses Resistance to Docetaxel in Prostate Cancer. *J Clin Med*. 2019-02-09 [PMID: 30744126]

Shrestha D, Kim N, Song K. Stathmin/Op18 depletion induces genomic instability and leads to premature senescence in human normal fibroblasts. *J Cell Biochem* 2018-02-01 [PMID: 28885720]

Oue N, Mukai S, Imai T et al. Induction of KIFC1 expression in gastric cancer spheroids. *Oncol Rep* 2016-04-28 [PMID: 27176706]

Sati L, Seval-Celik Y, Unek G et al. The Presence of Kinesin Superfamily Motor Proteins KIFC1 and KIF17 in Normal and Pathological Human Placenta. *Placenta*;30(10):848-54. 2009-10-01 [PMID: 19679349]



Novus Biologicals USA

10730 E. Briarwood Avenue
Centennial, CO 80112
USA
Phone: 303.730.1950
Toll Free: 1.888.506.6887
Fax: 303.730.1966
nb-customerservice@bio-techne.com

Bio-Techne Canada

21 Canmotor Ave
Toronto, ON M8Z 4E6
Canada
Phone: 905.827.6400
Toll Free: 855.668.8722
Fax: 905.827.6402
canada.inquires@bio-techne.com

Bio-Techne Ltd

19 Barton Lane
Abingdon Science Park
Abingdon, OX14 3NB, United Kingdom
Phone: (44) (0) 1235 529449
Free Phone: 0800 37 34 15
Fax: (44) (0) 1235 533420
info.EMEA@bio-techne.com

General Contact Information

www.novusbio.com
Technical Support: nb-technical@bio-techne.com
Orders: nb-customerservice@bio-techne.com
General: novus@novusbio.com

Products Related to H00003833-M01

HAF007	Goat anti-Mouse IgG Secondary Antibody [HRP]
NB720-B	Rabbit anti-Mouse IgG (H+L) Secondary Antibody [Biotin]
NBP1-96981-0.5mg	Mouse IgG2a Kappa Isotype Control (M2AK)
H00003833-P01-2ug	Recombinant Human KIFC1 GST (N-Term) Protein

Limitations

This product is for research use only and is not approved for use in humans or in clinical diagnosis. Primary Antibodies are guaranteed for 1 year from date of receipt.

For more information on our 100% guarantee, please visit www.novusbio.com/guarantee

Earn gift cards/discounts by submitting a review: www.novusbio.com/reviews/submit/H00003833-M01

Earn gift cards/discounts by submitting a publication using this product:
www.novusbio.com/publications

