

Product Datasheet

GTF2H1 Antibody (1F12-1B5) - Azide and BSA Free H00002965-M01

Unit Size: 0.1 mg

Aliquot and store at -20C or -80C. Avoid freeze-thaw cycles.

www.novusbio.com



technical@novusbio.com

Publications: 2

Protocols, Publications, Related Products, Reviews, Research Tools and Images at:
www.novusbio.com/H00002965-M01

Updated 2/21/2025 v.20.1

Earn rewards for product
reviews and publications.

Submit a publication at www.novusbio.com/publications

Submit a review at www.novusbio.com/reviews/destination/H00002965-M01



H00002965-M01

GTF2H1 Antibody (1F12-1B5) - Azide and BSA Free

Product Information	
Unit Size	0.1 mg
Concentration	Concentrations vary lot to lot. See vial label for concentration. If unlisted please contact technical services.
Storage	Aliquot and store at -20C or -80C. Avoid freeze-thaw cycles.
Clonality	Monoclonal
Clone	1F12-1B5
Preservative	No Preservative
Isotype	IgG1 Kappa
Purity	IgG purified
Buffer	In 1x PBS, pH 7.4

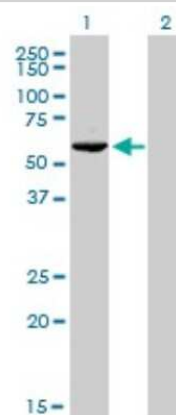
Product Description	
Description	Quality control test: Antibody Reactive Against Recombinant Protein.
Host	Mouse
Gene ID	2965
Gene Symbol	GTF2H1
Species	Human
Specificity/Sensitivity	GTF2H1 - general transcription factor IIH, polypeptide 1, 62kDa
Immunogen	GTF2H1 (AAH00365, 1 a.a. ~ 548 a.a) full-length recombinant protein with GST tag. MW of the GST tag alone is 26 KDa. MATSSEEVLLIVKKVRQKKQD GALYLMAERIAWAPEGKDRFTISHMYADIKCQK ISPEGKAKIQLQLVLHAGDTTNFHFHFNSTAVKERDAVKDLLQQLLPKFKRAN KELEEKNRMLQEDPVLFLYKDLVVSQVISAEFFWANRLNVNATDSSSTSNHK QDVGISA AFLADVRPQTDGCNGLRYNLTSDIIESIFRTYPVKMKYAENVPHNM TEKEFWTRFFQSHYFHRDRLNTGSKDLFAECAKIDEKGLKTMVSLGVKNPLLD LTALEDKPLDEGYGISSVPSASNSKSIKENSNAAIKRFNHHSAMVLAAGLRKQE AQNEQTSEPSNMDGNSGDADCFQPAVKRAKLQESIEYEDLGKNNSVKTIALNL KKSDRYYHGPTPIQSLQYATSQDIINSFQSIRQEMEAYTPKLTQVLSSSAASSTI TALSPGGALMQGGTQQAINQMVPNDIQSELKHLYVAVGELLRHFWSFCFPVNT FLEEKVVKMKS NLERFQVTKLCPFQEKIRRQYLSTNLVSHIEEMLQTAYNKLHT WQSRRLMKKT
Notes	This product is produced by and distributed for Abnova, a company based in Taiwan.

Product Application Details	
Applications	Western Blot, ELISA, Immunocytochemistry/ Immunofluorescence, Immunohistochemistry, Immunohistochemistry-Paraffin, Sandwich ELISA, Knockdown Validated
Recommended Dilutions	Western Blot 1:500, ELISA, Immunohistochemistry, Immunocytochemistry/ Immunofluorescence, Immunohistochemistry-Paraffin, Sandwich ELISA, Knockdown Validated
Application Notes	Antibody reactivity against recombinant protein and cell lysate for WB. It has been used for IF, IHC-P, RNAi Validation and ELISA.

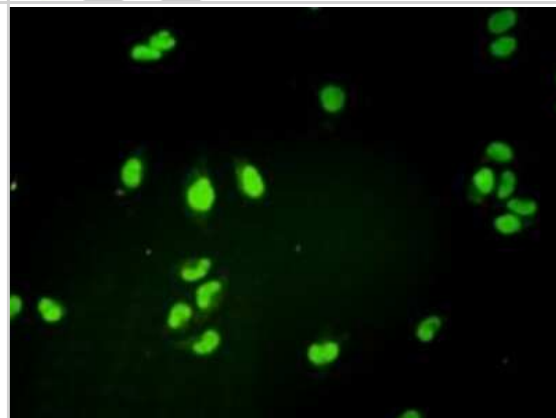


Images

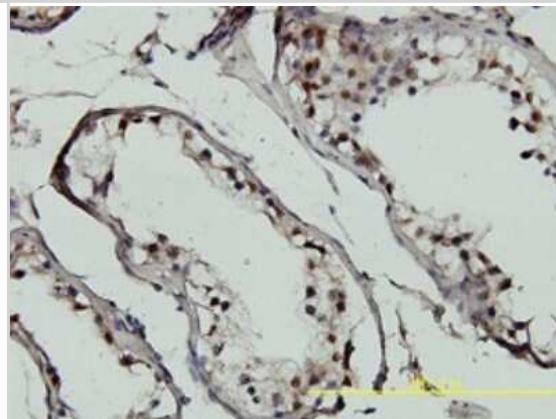
Western Blot: GTF2H1 Antibody (1F12-1B5) [H00002965-M01] - Analysis of GTF2H1 expression in transfected 293T cell line by GTF2H1 monoclonal antibody (M01), clone 1F12-1B5. Lane 1: GTF2H1 transfected lysate(62 KDa). Lane 2: Non-transfected lysate.



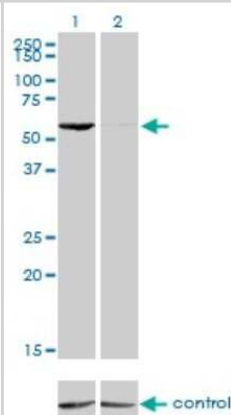
Immunocytochemistry/Immunofluorescence: GTF2H1 Antibody (1F12-1B5) [H00002965-M01] - Analysis of monoclonal antibody to GTF2H1 on HeLa cell. Antibody concentration 10 ug/ml.



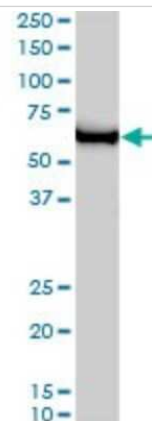
Immunohistochemistry-Paraffin: GTF2H1 Antibody (1F12-1B5) [H00002965-M01] - Analysis of monoclonal antibody to GTF2H1 on formalin-fixed paraffin-embedded human testis tissue. Antibody concentration 5 ug/ml.



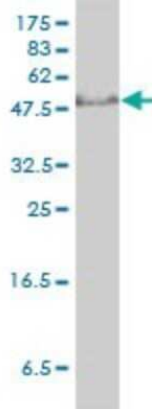
Western Blot: GTF2H1 Antibody (1F12-1B5) [H00002965-M01] - Analysis of GTF2H1 over-expressed 293 cell line, cotransfected with GTF2H1 Validated Chimera RNAi (Cat # H00002965-R01V) (Lane 2) or non-transfected control (Lane 1). Blot probed with GTF2H1 monoclonal antibody (M01), clone 1F12-1B5 (Cat # H00002965-M01). GAPDH (36.1 kDa) used as specificity and loading control.



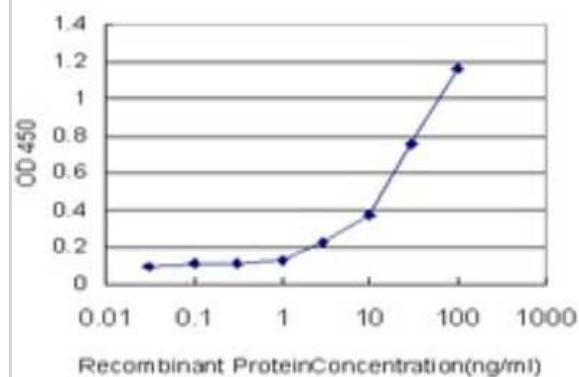
Western Blot: GTF2H1 Antibody (1F12-1B5) [H00002965-M01] - GTF2H1 monoclonal antibody (M01), clone 1F12-1B5. Analysis of GTF2H1 expression in Hela S3 NE.



Western Blot: GTF2H1 Antibody (1F12-1B5) [H00002965-M01] - GTF2H1 monoclonal antibody (M01), clone 1F12-1B5 Analysis of GTF2H1 expression in Jurkat.



Sandwich ELISA: GTF2H1 Antibody (1F12-1B5) [H00002965-M01] - Detection limit for recombinant GST tagged GTF2H1 is approximately 1ng/ml as a capture antibody.



Publications

Earley JN, Turchi JJ. Interrogation of Nucleotide Excision Repair Capacity: Impact on Platinum-Based Cancer Therapy Antioxid Redox Signal 2011-06-15 [PMID: 20812782] (ELISA, Human)

Li G, Liu J, Abu-Asab M et al. XPB induces C1D expression to counteract UV-induced apoptosis. Mol Cancer Res 8 (6):885-95. 2010-06-01 [PMID: 20530579]



Novus Biologicals USA

10730 E. Briarwood Avenue
Centennial, CO 80112
USA
Phone: 303.730.1950
Toll Free: 1.888.506.6887
Fax: 303.730.1966
nb-customerservice@bio-techne.com

Bio-Techne Canada

21 Canmotor Ave
Toronto, ON M8Z 4E6
Canada
Phone: 905.827.6400
Toll Free: 855.668.8722
Fax: 905.827.6402
canada.inquires@bio-techne.com

Bio-Techne Ltd

19 Barton Lane
Abingdon Science Park
Abingdon, OX14 3NB, United Kingdom
Phone: (44) (0) 1235 529449
Free Phone: 0800 37 34 15
Fax: (44) (0) 1235 533420
info.EMEA@bio-techne.com

General Contact Information

www.novusbio.com
Technical Support: nb-technical@bio-techne.com
Orders: nb-customerservice@bio-techne.com
General: novus@novusbio.com

Products Related to H00002965-M01

HAF007	Goat anti-Mouse IgG Secondary Antibody [HRP]
NB720-B	Rabbit anti-Mouse IgG (H+L) Secondary Antibody [Biotin]
NBP1-43319-0.5mg	Mouse IgG1 Kappa Isotype Control (P3.6.2.8.1)
NBP2-38556PEP	GTF2H1 Recombinant Protein Antigen

Limitations

This product is for research use only and is not approved for use in humans or in clinical diagnosis. Primary Antibodies are guaranteed for 1 year from date of receipt.

For more information on our 100% guarantee, please visit www.novusbio.com/guarantee

Earn gift cards/discounts by submitting a review: www.novusbio.com/reviews/submit/H00002965-M01

Earn gift cards/discounts by submitting a publication using this product:
www.novusbio.com/publications

