

Product Datasheet

Fibrinogen gamma chain Antibody (1F2) - Azide and BSA Free H00002266-M01

Unit Size: 0.1 mg

Aliquot and store at -20C or -80C. Avoid freeze-thaw cycles.

www.novusbio.com



technical@novusbio.com

Publications: 6

Protocols, Publications, Related Products, Reviews, Research Tools and Images at:
www.novusbio.com/H00002266-M01

Updated 2/21/2025 v.20.1

Earn rewards for product reviews and publications.

Submit a publication at www.novusbio.com/publications

Submit a review at www.novusbio.com/reviews/destination/H00002266-M01

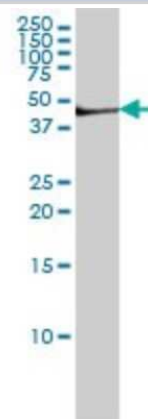


H00002266-M01**Fibrinogen gamma chain Antibody (1F2) - Azide and BSA Free**

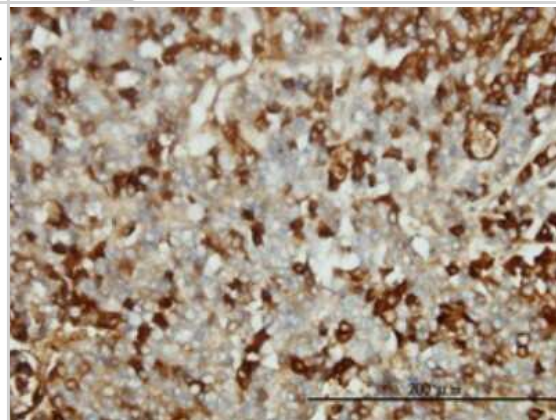
Product Information	
Unit Size	0.1 mg
Concentration	Concentrations vary lot to lot. See vial label for concentration. If unlisted please contact technical services.
Storage	Aliquot and store at -20C or -80C. Avoid freeze-thaw cycles.
Clonality	Monoclonal
Clone	1F2
Preservative	No Preservative
Isotype	IgG1 Kappa
Purity	IgG purified
Buffer	In 1x PBS, pH 7.4
Product Description	
Description	Quality control test: Antibody Reactive Against Recombinant Protein.
Host	Mouse
Gene ID	2266
Gene Symbol	FGG
Species	Human
Specificity/Sensitivity	FGG - fibrinogen gamma chain
Immunogen	FGG (AAH07044, 31 a.a. ~ 130 a.a) partial recombinant protein with GST tag. MW of the GST tag alone is 26 KDa. RDNCCILDERFGSYCPTTCGIADFLSTYQTKVDKDLQSLEDILHQVENKTSEVK QLIKAIQLTYNPDESSKPNMIDAATLKSRLKMLEEIMKYEASILTHD
Notes	This product is produced by and distributed for Abnova, a company based in Taiwan.
Product Application Details	
Applications	Western Blot, ELISA, Immunohistochemistry, Immunohistochemistry-Paraffin, Proximity Ligation Assay, Sandwich ELISA
Recommended Dilutions	Western Blot 1:500, ELISA, Immunohistochemistry, Immunohistochemistry-Paraffin, Proximity Ligation Assay, Sandwich ELISA
Application Notes	Antibody reactivity against cell lysate and recombinant protein for WB. It has also been used for IHC-P and ELISA.

Images

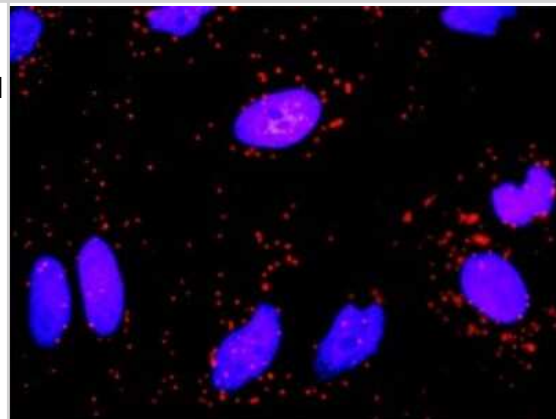
Western Blot: Fibrinogen gamma chain Antibody (1F2) [H00002266-M01] - FGG monoclonal antibody (M01), clone 1F2 Analysis of FGG expression in Hela S3 NE.



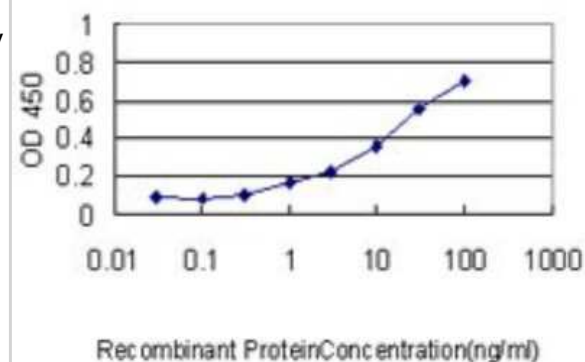
Immunohistochemistry-Paraffin: Fibrinogen gamma chain Antibody (1F2) [H00002266-M01] - Analysis of monoclonal antibody to FGG on formalin-fixed paraffin-embedded human hepatocellular carcinoma tissue. Antibody concentration 1 ug/ml.



Proximity Ligation Assay: Fibrinogen gamma chain Antibody (1F2) [H00002266-M01] - Analysis of protein-protein interactions between ICAM1 and FGG. HeLa cells were stained with anti-ICAM1 rabbit purified polyclonal 1:1200 and anti-FGG mouse monoclonal antibody 1:50. Each red dot represents the detection of protein-protein interaction complex, and nuclei were counterstained with DAPI (blue).



Sandwich ELISA: Fibrinogen gamma chain Antibody (1F2) [H00002266-M01] - Detection limit for recombinant GST tagged FGG is approximately 0.3ng/ml as a capture antibody.



Publications

Visualization of Neutrophil Extracellular Traps and Fibrin Meshwork in Human Fibrinopurulent Inflammatory Lesions: II. Ultrastructural Study Onouchi T, Shiogama K, Matsui T et al. Acta Histochem Cytochem [PMID: 27682015] (IHC-P, Human)

Shiogama K, Onouchi T, Mizutani Y et al. Visualization of Neutrophil Extracellular Traps and Fibrin Meshwork in Human Fibrinopurulent Inflammatory Lesions: I. Light Microscopic Study. Acta Histochem Cytochem Jul 30 2016 12:00AM

Onouchi T, Shiogama K, Matsui T et al. Visualization of Neutrophil Extracellular Traps and Fibrin Meshwork in Human Fibrinopurulent Inflammatory Lesions: II. Ultrastructural Study. Acta Histochem Cytochem 2016-07-30 [PMID: 27917008]

Shiogama K, Onouchi T, Mizutani Y et al. Visualization of Neutrophil Extracellular Traps and Fibrin Meshwork in Human Fibrinopurulent Inflammatory Lesions: I. Light Microscopic Study. Acta Histochem Cytochem 2016-07-30 [PMID: 27682014]

Verrills NM, Irwin JA, He XY et al. Identification of Novel Diagnostic Biomarkers for Asthma and Chronic Obstructive Pulmonary Disease. Am J Respir Crit Care Med. 2011-03-18 [PMID: 21471098]

Horlock C, Shakib F, Mahdavi J et al. Analysis of proteomic profiles and functional properties of human peripheral blood myeloid dendritic cells, monocyte-derived dendritic cells and the dendritic cell-like KG-1 cells reveals distinct characteristics. Genome Biol 2007-03-01 [PMID: 17331236]





Novus Biologicals USA

10730 E. Briarwood Avenue
Centennial, CO 80112
USA
Phone: 303.730.1950
Toll Free: 1.888.506.6887
Fax: 303.730.1966
nb-customerservice@bio-techne.com

Bio-Techne Canada

21 Canmotor Ave
Toronto, ON M8Z 4E6
Canada
Phone: 905.827.6400
Toll Free: 855.668.8722
Fax: 905.827.6402
canada.inquires@bio-techne.com

Bio-Techne Ltd

19 Barton Lane
Abingdon Science Park
Abingdon, OX14 3NB, United Kingdom
Phone: (44) (0) 1235 529449
Free Phone: 0800 37 34 15
Fax: (44) (0) 1235 533420
info.EMEA@bio-techne.com

General Contact Information

www.novusbio.com
Technical Support: nb-technical@bio-techne.com
Orders: nb-customerservice@bio-techne.com
General: novus@novusbio.com

Products Related to H00002266-M01

HAF007	Goat anti-Mouse IgG Secondary Antibody [HRP]
NB720-B	Rabbit anti-Mouse IgG (H+L) Secondary Antibody [Biotin]
NBP1-43319-0.5mg	Mouse IgG1 Kappa Isotype Control (P3.6.2.8.1)
NBP2-51960-0.02mg	Recombinant Human Fibrinogen gamma chain His Protein

Limitations

This product is for research use only and is not approved for use in humans or in clinical diagnosis. Primary Antibodies are guaranteed for 1 year from date of receipt.

For more information on our 100% guarantee, please visit www.novusbio.com/guarantee

Earn gift cards/discounts by submitting a review: www.novusbio.com/reviews/submit/H00002266-M01

Earn gift cards/discounts by submitting a publication using this product:
www.novusbio.com/publications

