

# Product Datasheet

## Recombinant Human HIF-2 alpha/EPAS1 GST (N-Term) Protein H00002034-P03-2ug

Unit Size: 2 ug

Store at -80C. Avoid freeze-thaw cycles.

[www.novusbio.com](http://www.novusbio.com)



[technical@novusbio.com](mailto:technical@novusbio.com)

### Publications: 2

Protocols, Publications, Related Products, Reviews, Research Tools and Images at:  
[www.novusbio.com/H00002034-P03](http://www.novusbio.com/H00002034-P03)

Updated 10/23/2024 v.20.1

Earn rewards for product  
reviews and publications.

Submit a publication at [www.novusbio.com/publications](http://www.novusbio.com/publications)

Submit a review at [www.novusbio.com/reviews/destination/H00002034-P03](http://www.novusbio.com/reviews/destination/H00002034-P03)



**H00002034-P03-2ug****Recombinant Human HIF-2 alpha/EPAS1 GST (N-Term) Protein**

<b>Product Information</b>	
<b>Unit Size</b>	2 ug
<b>Concentration</b>	Please see the vial label for concentration. If unlisted please contact technical services.
<b>Storage</b>	Store at -80C. Avoid freeze-thaw cycles.
<b>Preservative</b>	No Preservative
<b>Purity</b>	>80% by SDS-PAGE and Coomassie blue staining
<b>Buffer</b>	50 mM Tris-HCl, 10 mM reduced Glutathione, pH 8.0 in the elution buffer.
<b>Target Molecular Weight</b>	122.1 kDa
<b>Product Description</b>	
<b>Description</b>	<p>A recombinant protein with GST tag at N-terminal corresponding to the amino acids 1-870 of Human EPAS1</p> <p><b>Source:</b> <i>Wheat Germ (in vitro)</i></p> <p><b>Amino Acid Sequence:</b>  MTADKEKKRSSSERRKEKSRDAARCRRSKETEVFYELAHELPLPHSVSSHLDK  ASIMRLAISFLRTHKLLSSVCSENESEAEADQQMDNLYLKALEGFIAVVTQDGD  MIFLSENISKFMGLTQVELTGHSIFDFTHPCDHEEIRENLSLKNGSGFGKKS  MSTERDFFMRMKCTVTNRGRTVNLKSATWKVLHCTGQVKVYNNCPPHNSLC  GYKEPLLSCLIIMCEPIQHPSHMDIPLDSKTFLSRHSMDMKFTYCDDRITELIGYH  PEELLGRSAYEFYHALDSENMTKSHQNLCTKGQVVSQYRMLAKHGGYVWL  ETQGTVIYNPRNLQPQCIMCVNYVLSEIEKNDVVFSDQTESLFPKPHLMAMNSI  FDSSGKGAVSEKSNFLFTKLKEEPEELAQLAFTVPQAAAPGSTTPSATSSSSSSCS  TPNSPEDYYTSLDNDLKIEVIEKLFAMDTEAKDQCSTQTDNFELDLETLPYIPM  DGEDFQLSPICPEERLLAENPQSTPQHCFSAMTNIFQPLAPVAPHSPFLLDKFQ  QQLESKKTEPEHRPMSSIFFDAGSKASLPPCCGQASTPLSSMGGRSNTQWPP  DPPLHFGPTKWAVGDQRTEFLGAAPLGPVSPPHVSTFKTRSAKGFARGPD  VLSPAMVALSNKLLKLRQLEYEEQAFQDLSSGGDPPGGSTSHLMWKRMLNLRG  GSCPLMPDKPLSANVPNDKFTQNPMPRGLGHPLRHLPLPQPPSAISPGENSKS  RFPPQCYATQYQDYSLSSAHKVSGMASRLLGSPFESYLLPELTRYDCEVNVVPV  LGSSTLLQGGDLLRALDQAT</p>
<b>Gene ID</b>	2034
<b>Gene Symbol</b>	EPAS1
<b>Species</b>	Human
<b>Preparation Method</b>	in vitro wheat germ expression system
<b>Details of Functionality</b>	This protein was produced in an in vitro wheat germ expression system that should preserve correct conformational folding that is necessary for biological function. While it is possible that this protein could display some level of activity, the functionality of this protein has not been explicitly measured or validated.
<b>Notes</b>	This product is produced by and distributed for Abnova, a company based in Taiwan.
<b>Product Application Details</b>	
<b>Applications</b>	Western Blot, ELISA, Protein Array, Immunoaffinity Purification

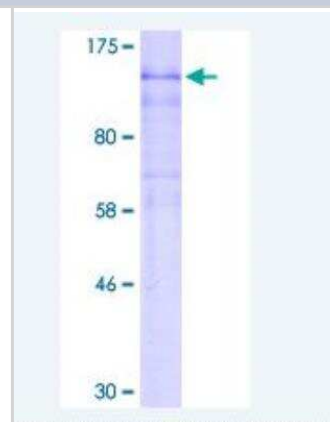


**Recommended Dilutions**

Western Blot, ELISA, Protein Array, Immunoaffinity Purification

**Images**

SDS-Page: Recombinant Human HIF-2 alpha/EPAS1 Protein [H00002034-P03] - 12.5% SDS-PAGE Stained with Coomassie Blue

**Publications**

Coltella N, Percio S, Valsecchi R et al. HIF factors cooperate with PML-RARalpha to promote acute promyelocytic leukemia progression and relapse. *EMBO Mol Med.* 2014-03-21 [PMID: 24711541]

Smeyne M, Sladen P, Jiao Y et al. HIF1a is necessary for exercise-induced neuroprotection while HIF2a is needed for dopaminergic neuron survival in the substantia nigra pars compacta. *Neuroscience.* 2015-03-19 [PMID: 25796140] (WB, Human)



### **Novus Biologicals USA**

10730 E. Briarwood Avenue  
Centennial, CO 80112  
USA  
Phone: 303.730.1950  
Toll Free: 1.888.506.6887  
Fax: 303.730.1966  
nb-customerservice@bio-techne.com

### **Bio-Techne Canada**

21 Canmotor Ave  
Toronto, ON M8Z 4E6  
Canada  
Phone: 905.827.6400  
Toll Free: 855.668.8722  
Fax: 905.827.6402  
canada.inquires@bio-techne.com

### **Bio-Techne Ltd**

19 Barton Lane  
Abingdon Science Park  
Abingdon, OX14 3NB, United Kingdom  
Phone: (44) (0) 1235 529449  
Free Phone: 0800 37 34 15  
Fax: (44) (0) 1235 533420  
info.EMEA@bio-techne.com

### **General Contact Information**

www.novusbio.com  
Technical Support: nb-technical@bio-techne.com  
Orders: nb-customerservice@bio-techne.com  
General: novus@novusbio.com

### **Products Related to H00002034-P03-2ug**

---

NB100-122PEP	HIF-2 alpha/EPAS1 Antibody Blocking Peptide
NB100-105	HIF-1 alpha Antibody (H1alpha67)
NB100-122	HIF-2 alpha/EPAS1 Antibody - BSA Free
DVE00	VEGF [HRP]

---

### **Limitations**

This product is for research use only and is not approved for use in humans or in clinical diagnosis. Peptides and proteins are guaranteed for 3 months from date of receipt.

For more information on our 100% guarantee, please visit [www.novusbio.com/guarantee](http://www.novusbio.com/guarantee)

Earn gift cards/discounts by submitting a review: [www.novusbio.com/reviews/submit/H00002034-P03](http://www.novusbio.com/reviews/submit/H00002034-P03)

Earn gift cards/discounts by submitting a publication using this product:  
[www.novusbio.com/publications](http://www.novusbio.com/publications)

