

Product Datasheet

Enolase 1 Antibody (8G8) - Azide and BSA Free H00002023-M01

Unit Size: 0.1 mg

Aliquot and store at -20C or -80C. Avoid freeze-thaw cycles.

www.novusbio.com



technical@novusbio.com

Publications: 10

Protocols, Publications, Related Products, Reviews, Research Tools and Images at:
www.novusbio.com/H00002023-M01

Updated 2/21/2025 v.20.1

Earn rewards for product
reviews and publications.

Submit a publication at www.novusbio.com/publications

Submit a review at www.novusbio.com/reviews/destination/H00002023-M01



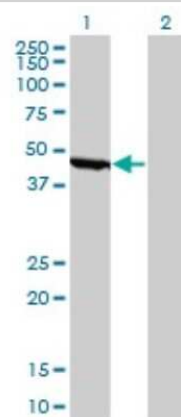
H00002023-M01

Enolase 1 Antibody (8G8) - Azide and BSA Free

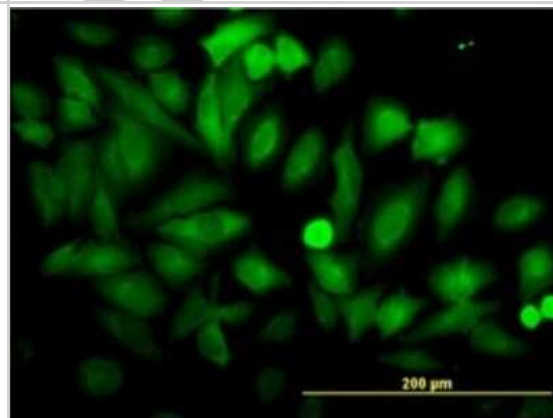
Product Information	
Unit Size	0.1 mg
Concentration	Concentrations vary lot to lot. See vial label for concentration. If unlisted please contact technical services.
Storage	Aliquot and store at -20C or -80C. Avoid freeze-thaw cycles.
Clonality	Monoclonal
Clone	8G8
Preservative	No Preservative
Isotype	IgG1 Kappa
Purity	IgG purified
Buffer	In 1x PBS, pH 7.4
Product Description	
Description	Quality control test: Antibody Reactive Against Recombinant Protein.
Host	Mouse
Gene ID	2023
Gene Symbol	ENO1
Species	Human, Feline
Specificity/Sensitivity	ENO1 - enolase 1, (alpha)
Immunogen	ENO1 (AAH22545, 1 a.a. ~ 434 a.a) full-length recombinant protein with GST tag. MW of the GST tag alone is 26 KDa. MSILKIHAREIFDSRGNPTVEVDLFTSKGLFRAAVPSGASTGIYEALERDNDKT RYMGKGVSKAVEHINKTIAPALVSKKLNVTQEKIDKLMIEDGTENKSKFGAN AILGVSLAVCKAGAVEKGVPLYRHIADLAGNSEVILPVPAFNVINGGSHAGNKLA MQEFMILPVGAANFREAMRIGAEVYHNLKNVIKEKYGKDATNVGDEGGFAPNIL ENKEGLELLKTAIGKAGYTDKVVIGMDVAASEFFRSGKYDLDFKSPDDPSRYIS PDQLADLYKSFIDYPVVSIEDPFDQDDWGAWQKFTASAGIQVVGDDLTVTNP KRIKAVNEKSCNCLLLKVNQIGSVTESLQACKLAQANGWGMVSHRSGETED TFIADLVVGLCTGQIKTGAPCRSERLAKYNQLLRIEEELGSKAKFAGRNFNRNPLA K
Notes	This product is produced by and distributed for Abnova, a company based in Taiwan.
Product Application Details	
Applications	Western Blot, ELISA, Flow Cytometry, Functional, Immunocytochemistry/ Immunofluorescence, Immunohistochemistry, Immunohistochemistry-Paraffin, Immunoprecipitation
Recommended Dilutions	Western Blot 1:500, Flow Cytometry, ELISA, Immunohistochemistry 1:10-1:500, Immunocytochemistry/ Immunofluorescence 1:10-1:500, Immunoprecipitation 1:10-1:500, Immunohistochemistry-Paraffin 1:10-1:500, Functional
Application Notes	Antibody reactivity against recominant protein, transfected lysate and cell lysate for WB. It has been used for IF, IHC-P and ELISA.

Images

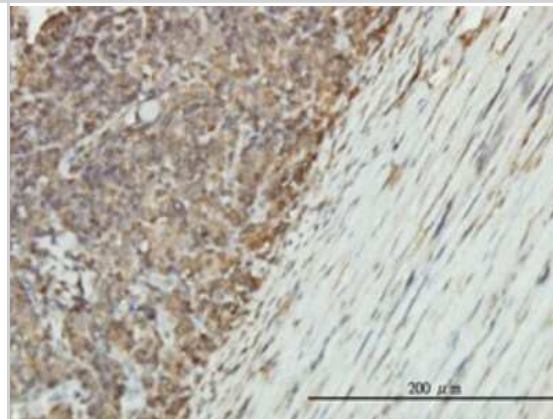
Western Blot: Enolase 1 Antibody (8G8) [H00002023-M01] - Analysis of ENO1 expression in transfected 293T cell line by ENO1 monoclonal antibody (M01), clone 8G8. Lane 1: ENO1 transfected lysate(47 KDa). Lane 2: Non-transfected lysate.



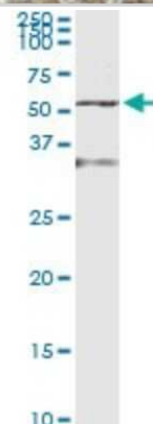
Immunocytochemistry/Immunofluorescence: Enolase 1 Antibody (8G8) [H00002023-M01] - Analysis of monoclonal antibody to ENO1 on HeLa cell. Antibody concentration 10 ug/ml.



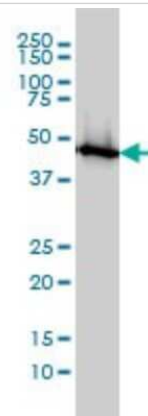
Immunohistochemistry-Paraffin: Enolase 1 Antibody (8G8) [H00002023-M01] - Analysis of monoclonal antibody to ENO1 on formalin-fixed paraffin-embedded human lymphoma tissue. Antibody concentration 1 ug/ml.



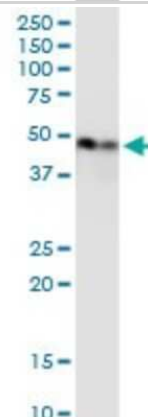
Western Blot: Enolase 1 Antibody (8G8) [H00002023-M01] - Analysis of ENO1 transfected lysate using anti-ENO1 monoclonal antibody and Protein A Magnetic Bead, and immunoblotted with ENO1 MaxPab rabbit polyclonal antibody.



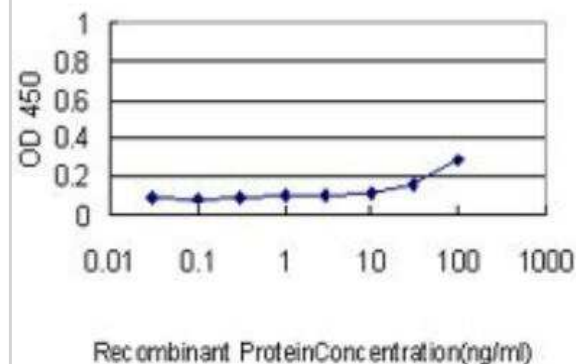
Western Blot: Enolase 1 Antibody (8G8) [H00002023-M01] - ENO1 monoclonal antibody (M01), clone 8G8 Analysis of ENO1 expression in MCF-7.



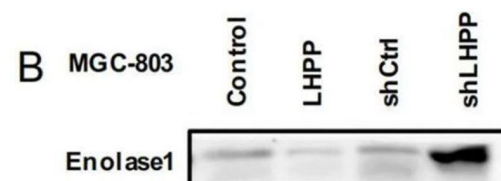
Western Blot: Enolase 1 Antibody (8G8) [H00002023-M01] - ENO1 monoclonal antibody (M01), clone 8G8. Analysis of ENO1 expression in human colon.



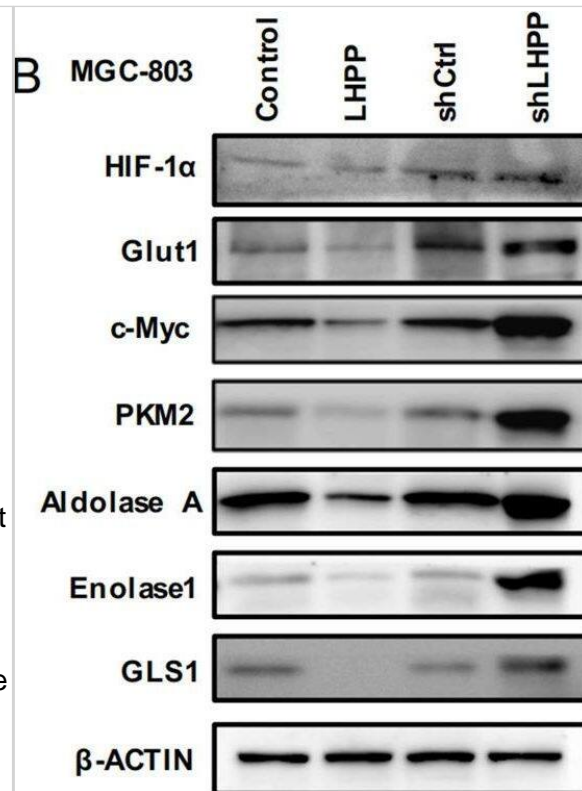
ELISA: Enolase 1 Antibody (8G8) [H00002023-M01] - Detection limit for recombinant GST tagged ENO1 is approximately 0.3ng/ml as a capture antibody.



Western Blot: Enolase 1 Antibody (8G8) [H00002023-M01] - LHPP suppresses aerobic glycolysis. Protein expression levels of Enolase 1 in LHPP-overexpressing or LHPP-knockdown MGC-803 cells and control cells on western blot. Image collected and cropped by CiteAb from the following publication (<http://pubmed.ncbi.nlm.nih.gov/35568711/>) licensed under a CC-BY license.



Western Blot: Enolase 1 Antibody (8G8) [H00002023-M01] - LHPP suppresses aerobic glycolysis. A Relative mRNA expression levels of glycolytic genes & glutamine transporters in LHPP-overexpressing or LHPP-knockdown MGC-803 cells & control cells by qPCR. B Protein expression levels of glycolytic genes & glutamine transporters in LHPP-overexpressing or LHPP-knockdown MGC-803 cells & control cells on western blot. C IHC staining of LHPP & HIF1A in TMAs & their correlation. Scale bars = 100 μ m. D Oxygen consumption rate & extracellular acidification rate of LHPP-overexpressing or LHPP-knockdown MGC-803 cells & control cells were measured using the Seahorse Bioscience XF96 analyser. E Human phosphokinase microarray assay analysis of the conditioned medium from stably transfected HGC-27 cells. A summary of the relative signal intensities of the indicated proteins is shown. G, H IHC staining of LHPP & p-GSK3b in TMAs & their correlation. Scale bars = 200 μ m. F Combined LHPP & GSK3b by co-immunoprecipitation. I Protein expression levels of the Wnt pathway in LHPP-overexpressing or LHPP-knockdown MGC-803 cells & control cells on western blot. Data were analyzed using the Wilcoxon test. *P < 0.05, **P < 0.01, ***P < 0.001, KEGG Kyoto encyclopaedia of genes & genomes, GO gene ontology, qPCR quantitative polymerase chain reaction, IHC immunohistochemical, TMA tissue microarray. Image collected & cropped by CiteAb from the following publication (<https://pubmed.ncbi.nlm.nih.gov/35568711>), licensed under a CC-BY license. Not internally tested by Novus Biologicals.



Publications

- McLeland S, Quimby J, Lappin M et al. Alpha-enolase staining patterns in the renal tissues of cats with and without chronic kidney disease. *Vet Immunol Immunopathol.* 2019-05-01 [PMID: 31213248]
- Lin J, Lian N, Gao Y Et Al. m6A Methylation Mediates LHPP Acetylation as a Tumour Aerobic Glycolysis Suppressor to Improve the Prognosis of Gastric Cancer Cell Death *Dis* 2022-05-14 [PMID: 35568711]
- Huppertz I, Perez-Perri JI, Mantas P et al. Riboregulation of Enolase 1 activity controls glycolysis and embryonic stem cell differentiation *Molecular cell* 2022-06-10 [PMID: 35709751] (WB)
- Tohgasaki T, Ozawa N, Yoshino T et al. Enolase-1 expression in the stratum corneum is elevated with parakeratosis of atopic dermatitis and disrupts the cellular tight junction barrier in keratinocytes. *Int J Cosmet Sci* 2018-02-11 [PMID: 29430682]
- Zakrzewicz D, Didiasova M, Kruger M et al. Protein arginine methyltransferase 5 mediates enolase-1 cell surface trafficking in human lung adenocarcinoma cells. *Biochim Biophys Acta* 2018-03-02 [PMID: 29501774]
- Yu Y, Shen H, Yu H et al. Systematic proteomic analysis of human hepatocellular carcinoma cells reveals molecular pathways and networks involved in metastasis. *Mol Biosyst* 2011-04-06 [PMID: 21468425]
- Chu PY, Hsu NC, Liao AT et al. Overexpression of alpha-enolase correlates with poor survival in canine mammary carcinoma. *BMC Vet Res.* 2011-10-21 [PMID: 22014164]
- Zakrzewicz D, Didiasova M, Zakrzewicz A et al. The interaction with caveolae-associated proteins regulates enolase-1 subcellular localization. *Biochem J.* 2014-06-01 [PMID: 24628430]
- Zhao J, Chang AC, Li C et al. Comparative proteomic analysis of Barrett's metaplasia and esophageal adenocarcinomas using 2-D liquid mass mapping. *Mol Cell Proteomics* 2006-07-08 [PMID: 16829691]
- Ho JA, Chang HC, Shih NY et al. Diagnostic Detection of Human Lung Cancer-Associated Antigen Using a Gold Nanoparticle-Based Electrochemical Immunosensor. *Anal Chem.* 2010-06-17 [PMID: 20557064]



Novus Biologicals USA

10730 E. Briarwood Avenue
Centennial, CO 80112
USA
Phone: 303.730.1950
Toll Free: 1.888.506.6887
Fax: 303.730.1966
nb-customerservice@bio-techne.com

Bio-Techne Canada

21 Canmotor Ave
Toronto, ON M8Z 4E6
Canada
Phone: 905.827.6400
Toll Free: 855.668.8722
Fax: 905.827.6402
canada.inquires@bio-techne.com

Bio-Techne Ltd

19 Barton Lane
Abingdon Science Park
Abingdon, OX14 3NB, United Kingdom
Phone: (44) (0) 1235 529449
Free Phone: 0800 37 34 15
Fax: (44) (0) 1235 533420
info.EMEA@bio-techne.com

General Contact Information

www.novusbio.com
Technical Support: nb-technical@bio-techne.com
Orders: nb-customerservice@bio-techne.com
General: novus@novusbio.com

Products Related to H00002023-M01

HAF007	Goat anti-Mouse IgG Secondary Antibody [HRP]
NB720-B	Rabbit anti-Mouse IgG (H+L) Secondary Antibody [Biotin]
NBP1-43319-0.5mg	Mouse IgG1 Kappa Isotype Control (P3.6.2.8.1)
NBP1-30262	Recombinant Human Enolase 1 Protein

Limitations

This product is for research use only and is not approved for use in humans or in clinical diagnosis. Primary Antibodies are guaranteed for 1 year from date of receipt.

For more information on our 100% guarantee, please visit www.novusbio.com/guarantee

Earn gift cards/discounts by submitting a review: www.novusbio.com/reviews/submit/H00002023-M01

Earn gift cards/discounts by submitting a publication using this product:
www.novusbio.com/publications

