

Product Datasheet

mu Crystallin Antibody (6B3) - Azide and BSA Free H00001428-M03

Unit Size: 0.1 mg

Aliquot and store at -20C or -80C. Avoid freeze-thaw cycles.

www.novusbio.com



technical@novusbio.com

Publications: 8

Protocols, Publications, Related Products, Reviews, Research Tools and Images at:
www.novusbio.com/H00001428-M03

Updated 8/7/2025 v.20.1

Earn rewards for product
reviews and publications.

Submit a publication at www.novusbio.com/publications

Submit a review at www.novusbio.com/reviews/destination/H00001428-M03



H00001428-M03

mu Crystallin Antibody (6B3) - Azide and BSA Free

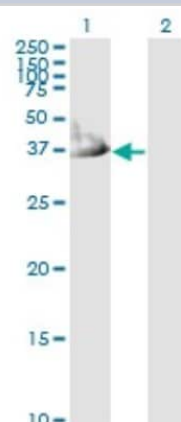
Product Information	
Unit Size	0.1 mg
Concentration	Concentrations vary lot to lot. See vial label for concentration. If unlisted please contact technical services.
Storage	Aliquot and store at -20C or -80C. Avoid freeze-thaw cycles.
Clonality	Monoclonal
Clone	6B3
Preservative	No Preservative
Isotype	IgG1 Kappa
Purity	Protein A purified
Buffer	In 1x PBS, pH 7.4

Product Description	
Description	Quality control test: Antibody Reactive Against Recombinant Protein.
Host	Mouse
Gene ID	1428
Gene Symbol	CRYM
Species	Human, Mouse
Specificity/Sensitivity	CRYM (6B3)
Immunogen	CRYM (NP_001879, 215 a.a. ~ 314 a.a) partial recombinant protein with GST tag. MW of the GST tag alone is 26 KDa. EWVKPGAHINAVGASRPDWRELDDELMKEAVLYVDSQEAAALKESGDVLLSGA EIFAELGEVIKGVKPAHCEKTTVFKSLGMAVEDTVAAKLIYDSWSSGK
Notes	This product is produced by and distributed for Abnova, a company based in Taiwan.

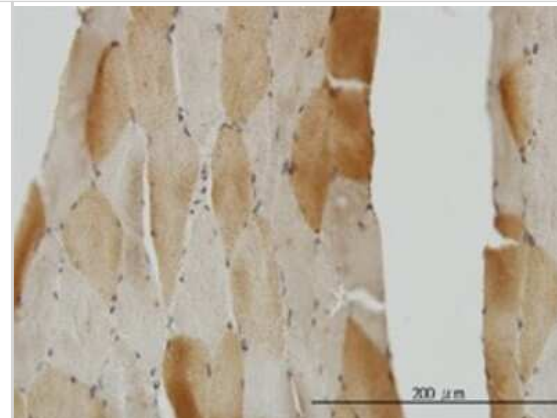
Product Application Details	
Applications	Western Blot, Immunohistochemistry-Paraffin, ELISA, Immunohistochemistry, Immunoprecipitation
Recommended Dilutions	Western Blot 1:500, ELISA, Immunohistochemistry, Immunoprecipitation, Immunohistochemistry-Paraffin
Application Notes	Antibody reactivity against cell lysate and recombinant protein for WB. It has also been used for IHC-P and ELISA.

Images

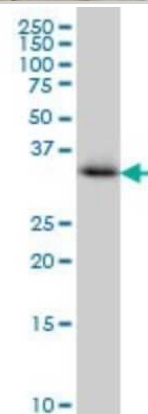
Western Blot: mu Crystallin Antibody (6B3) [H00001428-M03] - Analysis of CRYM expression in transfected 293T cell line by CRYM monoclonal antibody (M03), clone 6B3. Lane 1: CRYM transfected lysate (33.8 KDa). Lane 2: Non-transfected lysate.



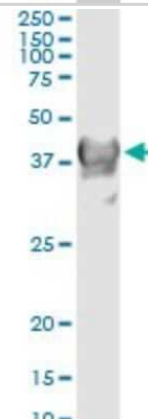
Immunohistochemistry-Paraffin: mu Crystallin Antibody (6B3) [H00001428-M03] - Analysis of monoclonal antibody to CRYM on formalin-fixed paraffin-embedded human skeletal muscle. Antibody concentration 3 ug/ml



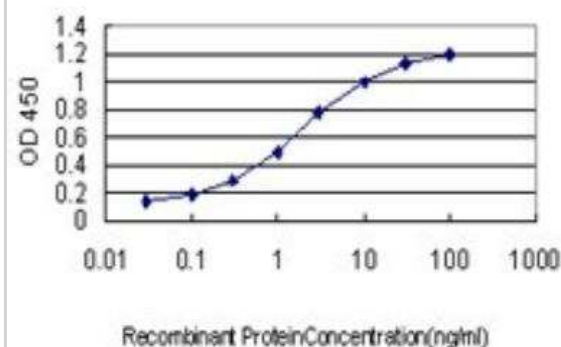
Western Blot: mu Crystallin Antibody (6B3) [H00001428-M03] - Analysis of CRYM expression in Jurkat (Cat # L017V1).



Immunoprecipitation: mu Crystallin Antibody (6B3) [H00001428-M03] - Analysis of CRYM transfected lysate using anti-CRYM monoclonal antibody and Protein A Magnetic Bead, and immunoblotted with CRYM rabbit polyclonal antibody.



ELISA: mu Crystallin Antibody (6B3) [H00001428-M03] - Detection limit for recombinant GST tagged CRYM is approximately 0.03ng/ml as a capture antibody.



Publications

Schnoell J, Kotowski U, Jank BJ et al. Prognostic Relevance of Thyroid-Hormone-Associated Proteins in Adenoid Cystic Carcinoma of the Head and Neck *Journal of personalized medicine* 2021-12-12 [PMID: 34945824]

Bernhard J, Markus H, Julia S et al. γ -Crystallin Is Associated with Disease Outcome in Head and Neck Squamous Cell Carcinoma. *J Pers Med*. 2021-12-08 [PMID: 34945802]

Christian K, Andrea O, Kaila N et al. γ -Crystallin in Mouse Skeletal Muscle Promotes a Shift from Glycolytic toward Oxidative Metabolism. *Curr Res Physiol*. 2021-02-09 [PMID: 34746826]

Vanderplanck C, Tassin A, Anseau E et al. Overexpression of the double homeodomain protein DUX4c interferes with myofibrillogenesis and induces clustering of myonuclei. *Skelet Muscle* 2018-01-12 [PMID: 29329560]

Vanderplanck C, Anseau E, Charron S et al. The FSHD Atrophic Myotube Phenotype Is Caused by DUX4 Expression. *PLoS One*. 2011-10-28 [PMID: 22053214]

Dilwali S, Lysaght A, Roberts D et al. Sporadic vestibular schwannomas associated with good hearing secrete higher levels of fibroblast growth factor 2 than those associated with poor hearing irrespective of tumor size. *Otol Neurotol*. 2013-06-01 [PMID: 23512073] (Human)

Mathur BN, Caprioli RM, Deutch AY. Proteomic Analysis Illuminates a Novel Structural Definition of the Claustrum Insula. *Cereb Cortex* :bhn253. 2009-01-01 [PMID: 19168664]

1 Reed PW, Corse AM, Porter NC et al. Abnormal expression of mu-crystallin in facioscapulohumeral muscular dystrophy. *Exp Neurol*;205(2):583-6. 2007-06-01 [PMID: 17451686]





Novus Biologicals USA

10730 E. Briarwood Avenue
Centennial, CO 80112
USA
Phone: 303.730.1950
Toll Free: 1.888.506.6887
Fax: 303.730.1966
nb-customerservice@bio-techne.com

Bio-Techne Canada

21 Canmotor Ave
Toronto, ON M8Z 4E6
Canada
Phone: 905.827.6400
Toll Free: 855.668.8722
Fax: 905.827.6402
canada.inquires@bio-techne.com

Bio-Techne Ltd

19 Barton Lane
Abingdon Science Park
Abingdon, OX14 3NB, United Kingdom
Phone: (44) (0) 1235 529449
Free Phone: 0800 37 34 15
Fax: (44) (0) 1235 533420
info.EMEA@bio-techne.com

General Contact Information

www.novusbio.com
Technical Support: nb-technical@bio-techne.com
Orders: nb-customerservice@bio-techne.com
General: novus@novusbio.com

Products Related to H00001428-M03

NB800-PC2	Jurkat Whole Cell Lysate
HAF007	Goat anti-Mouse IgG Secondary Antibody [HRP]
NB720-B	Rabbit anti-Mouse IgG (H+L) Secondary Antibody [Biotin]
NBP1-43319-0.5mg	Mouse IgG1 Kappa Isotype Control (P3.6.2.8.1)

Limitations

This product is for research use only and is not approved for use in humans or in clinical diagnosis. Primary Antibodies are guaranteed for 1 year from date of receipt.

For more information on our 100% guarantee, please visit www.novusbio.com/guarantee

Earn gift cards/discounts by submitting a review: www.novusbio.com/reviews/submit/H00001428-M03

Earn gift cards/discounts by submitting a publication using this product:
www.novusbio.com/publications

