

Product Datasheet

CrkL Antibody (4B5) - Azide and BSA Free H00001399-M03

Unit Size: 0.1 mg

Aliquot and store at -20C or -80C. Avoid freeze-thaw cycles.

www.novusbio.com



technical@novusbio.com

Publications: 2

Protocols, Publications, Related Products, Reviews, Research Tools and Images at:
www.novusbio.com/H00001399-M03

Updated 2/21/2025 v.20.1

Earn rewards for product
reviews and publications.

Submit a publication at www.novusbio.com/publications

Submit a review at www.novusbio.com/reviews/destination/H00001399-M03



H00001399-M03

CrkL Antibody (4B5) - Azide and BSA Free

Product Information	
Unit Size	0.1 mg
Concentration	Concentrations vary lot to lot. See vial label for concentration. If unlisted please contact technical services.
Storage	Aliquot and store at -20C or -80C. Avoid freeze-thaw cycles.
Clonality	Monoclonal
Clone	4B5
Preservative	No Preservative
Isotype	IgG2b Kappa
Purity	IgG purified
Buffer	In 1x PBS, pH 7.4
Product Description	
Description	Quality control test: Antibody Reactive Against Recombinant Protein.
Host	Mouse
Gene ID	1399
Gene Symbol	CRKL
Species	Human, Mouse
Specificity/Sensitivity	CRKL (4B5)
Immunogen	CRKL (NP_005198, 204 a.a. ~ 303 a.a) partial recombinant protein with GST tag. MW of the GST tag alone is 26 KDa. AHAYAQPQTTTPLPAVSGSPGAAITPLPSTQNGPVSFAKAIQKRVPCAYDKTALA LEVGDIVKVTRMNINGQWEGEVNGRKGLFPFTHVKIFDPQNPENE
Notes	This product is produced by and distributed for Abnova, a company based in Taiwan.
Product Application Details	
Applications	Western Blot, ELISA, Immunocytochemistry/ Immunofluorescence, Proximity Ligation Assay, Knockdown Validated
Recommended Dilutions	Western Blot 1:500, ELISA, Immunocytochemistry/ Immunofluorescence, Proximity Ligation Assay, Knockdown Validated
Application Notes	Antibody reactivity against Recombinant Protein with GST tag on ELISA and WB. GST tag alone is used as a negative control. It has been used for RNAi Validation.

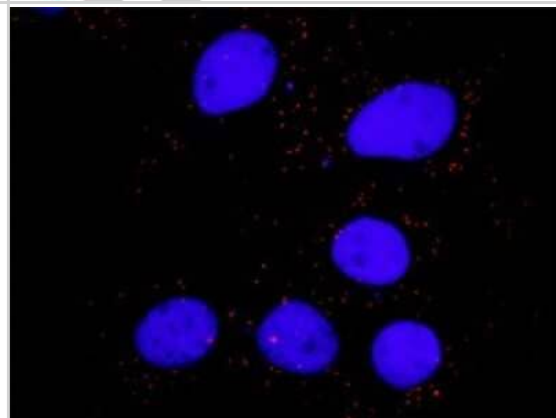


Images

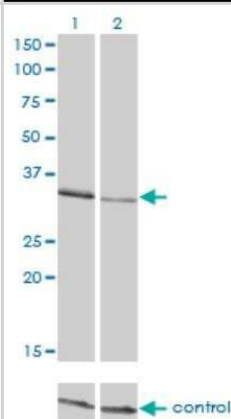
Western Blot: CrkL Antibody (4B5) [H00001399-M03] - Analysis of CRKL expression in transfected 293T cell line by CRKL monoclonal antibody (M03), clone 4B5. Lane 1: CRKL transfected lysate (33.8 KDa). Lane 2: Non-transfected lysate.



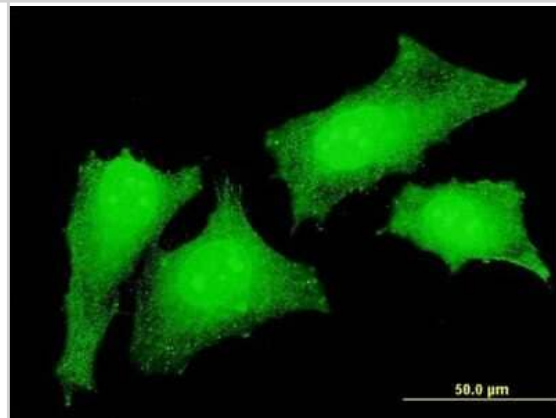
Immunocytochemistry/Immunofluorescence: CrkL Antibody (4B5) [H00001399-M03] - Analysis of protein-protein interactions between PTK2 and CRKL. Huh7 cells were stained with anti-PTK2 rabbit purified polyclonal 1:600 and anti-CRKL mouse monoclonal antibody 1:100. Each red dot represents the detection of protein-protein interaction com



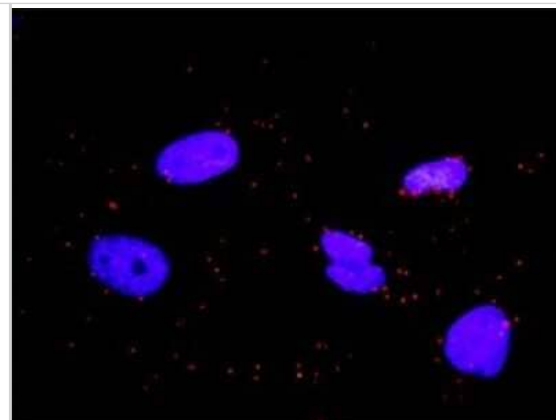
Western Blot: CrkL Antibody (4B5) [H00001399-M03] - Western blot analysis of CRKL over-expressed 293 cell line, cotransfected with CRKL Validated Chimera RNAi or non-transfected control. Blot probed with H00001399-M03. GAPDH (36.1 kDa) used as loading control.



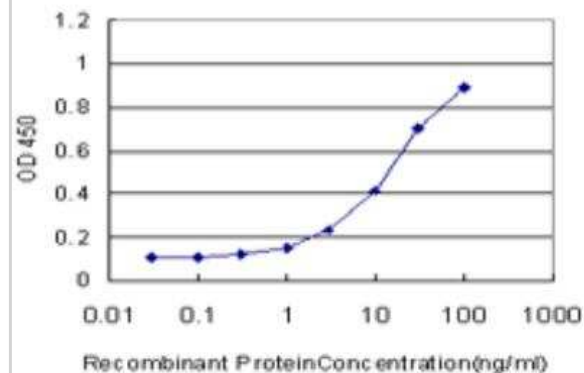
Immunocytochemistry/Immunofluorescence: CrkL Antibody (4B5) [H00001399-M03] - Analysis of monoclonal antibody to CRKL on HeLa cell. Antibody concentration 10 ug/ml



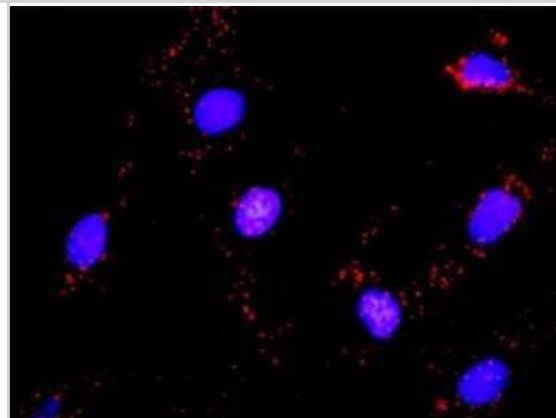
Immunocytochemistry/Immunofluorescence: CrkL Antibody (4B5) [H00001399-M03] - Analysis of protein-protein interactions between GAB1 and CRKL. HeLa cells were stained with anti-GAB1 rabbit purified polyclonal 1:1200 and anti-CRKL mouse monoclonal antibody 1:50. Each red dot represents the detection of protein-protein interaction com



ELISA: CrkL Antibody (4B5) [H00001399-M03] - Detection limit for recombinant GST tagged CRKL is approximately 0.3ng/ml as a capture antibody.



Proximity Ligation Assay: CrkL Antibody (4B5) [H00001399-M03] - Analysis of protein-protein interactions between HCK and CRKL. Mahlavu cells were stained with anti-HCK rabbit purified polyclonal 1:1200 and anti-CRKL mouse monoclonal antibody 1:50. Each red dot represents the detection of protein-protein interaction co



Publications

Segovis CM, Schoon RA, Dick CJ et al. PI3K Links NKG2D Signaling to a CrkL Pathway Involved in Natural Killer Cell Adhesion, Polarity, and Granule Secretion. *J Immunol.* 2009-06-01 [PMID: 19454690]

Liu CH, Chen TC, Chau GY et al. An analysis of protein-protein interactions in cross-talk pathways reveals CRKL as a novel prognostic marker in hepatocellular carcinoma. *Mol Cell Proteomics* 2013-02-08 [PMID: 23397142]



Novus Biologicals USA

10730 E. Briarwood Avenue
Centennial, CO 80112
USA
Phone: 303.730.1950
Toll Free: 1.888.506.6887
Fax: 303.730.1966
nb-customerservice@bio-techne.com

Bio-Techne Canada

21 Canmotor Ave
Toronto, ON M8Z 4E6
Canada
Phone: 905.827.6400
Toll Free: 855.668.8722
Fax: 905.827.6402
canada.inquires@bio-techne.com

Bio-Techne Ltd

19 Barton Lane
Abingdon Science Park
Abingdon, OX14 3NB, United Kingdom
Phone: (44) (0) 1235 529449
Free Phone: 0800 37 34 15
Fax: (44) (0) 1235 533420
info.EMEA@bio-techne.com

General Contact Information

www.novusbio.com
Technical Support: nb-technical@bio-techne.com
Orders: nb-customerservice@bio-techne.com
General: novus@novusbio.com

Products Related to H00001399-M03

HAF007	Goat anti-Mouse IgG Secondary Antibody [HRP]
NB720-B	Rabbit anti-Mouse IgG (H+L) Secondary Antibody [Biotin]
NBP1-43317-0.5mg	Mouse IgG2b Kappa Light Chain Isotype Control (MG2b)
NBP1-50941-0.1mg	Recombinant Human CrkL His Protein

Limitations

This product is for research use only and is not approved for use in humans or in clinical diagnosis. Primary Antibodies are guaranteed for 1 year from date of receipt.

For more information on our 100% guarantee, please visit www.novusbio.com/guarantee

Earn gift cards/discounts by submitting a review: www.novusbio.com/reviews/submit/H00001399-M03

Earn gift cards/discounts by submitting a publication using this product:
www.novusbio.com/publications

