

Product Datasheet

Cdk6 Antibody (8H4) - Azide and BSA Free H00001021-M01

Unit Size: 0.1 mg

Aliquot and store at -20C or -80C. Avoid freeze-thaw cycles.

www.novusbio.com



technical@novusbio.com

Publications: 4

Protocols, Publications, Related Products, Reviews, Research Tools and Images at:
www.novusbio.com/H00001021-M01

Updated 2/21/2025 v.20.1

Earn rewards for product
reviews and publications.

Submit a publication at www.novusbio.com/publications

Submit a review at www.novusbio.com/reviews/destination/H00001021-M01



H00001021-M01

Cdk6 Antibody (8H4) - Azide and BSA Free

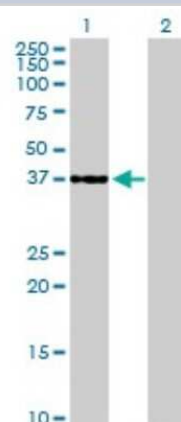
Product Information	
Unit Size	0.1 mg
Concentration	Concentrations vary lot to lot. See vial label for concentration. If unlisted please contact technical services.
Storage	Aliquot and store at -20C or -80C. Avoid freeze-thaw cycles.
Clonality	Monoclonal
Clone	8H4
Preservative	No Preservative
Isotype	IgG1 Kappa
Purity	IgG purified
Buffer	In 1x PBS, pH 7.4

Product Description	
Description	Quality control test: Antibody Reactive Against Recombinant Protein.
Host	Mouse
Gene ID	1021
Gene Symbol	CDK6
Species	Human, Rat
Specificity/Sensitivity	CDK6 - cyclin-dependent kinase 6
Immunogen	CDK6 (NP_001250, 3 a.a. ~ 99 a.a) partial recombinant protein with GST tag. MW of the GST tag alone is 26 KDa. KDGLCRADQQYECVAEIGEGAYGKVKARDLKNNGGRFVALKRVRVQTGEEGM PLSTIREVAVLRHLETFEHPNVVRLFDVCTVSRTDRETKLTLVFE
Notes	This product is produced by and distributed for Abnova, a company based in Taiwan.

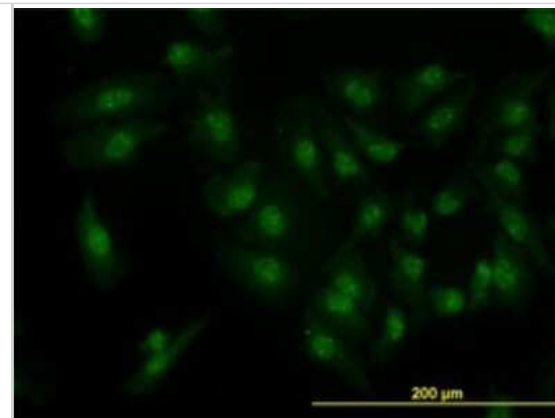
Product Application Details	
Applications	Western Blot, ELISA, Immunocytochemistry/ Immunofluorescence, Immunohistochemistry, Immunohistochemistry-Paraffin, Proximity Ligation Assay
Recommended Dilutions	Western Blot 1:500, ELISA, Immunohistochemistry, Immunocytochemistry/ Immunofluorescence, Immunohistochemistry-Paraffin, Proximity Ligation Assay
Application Notes	Antibody reactivity against cell lysate and recombinant protein for WB. It has also been used for IF, IHC-P and ELISA.

Images

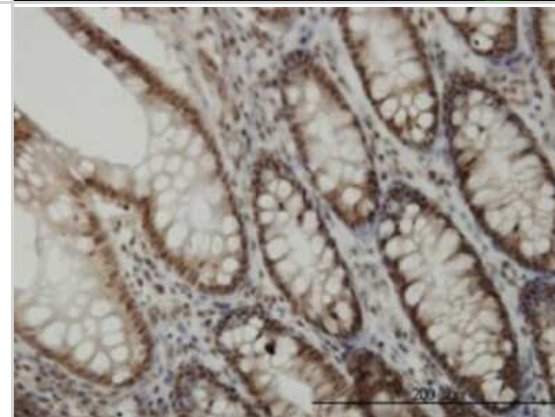
Western Blot: Cdk6 Antibody (8H4) [H00001021-M01] - Analysis of CDK6 expression in transfected 293T cell line by CDK6 monoclonal antibody (M01), clone 8H4. Lane 1: CDK6 transfected lysate(36.9 KDa). Lane 2: Non-transfected lysate.



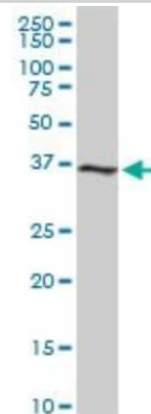
Immunocytochemistry/Immunofluorescence: Cdk6 Antibody (8H4) [H00001021-M01] - Analysis of monoclonal antibody to CDK6 on HeLa cell. Antibody concentration 10 ug/ml.



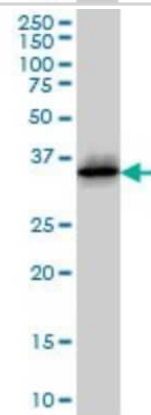
Immunohistochemistry-Paraffin: Cdk6 Antibody (8H4) [H00001021-M01] - Analysis of monoclonal antibody to CDK6 on formalin-fixed paraffin-embedded human colon. Antibody concentration 3 ug/ml.



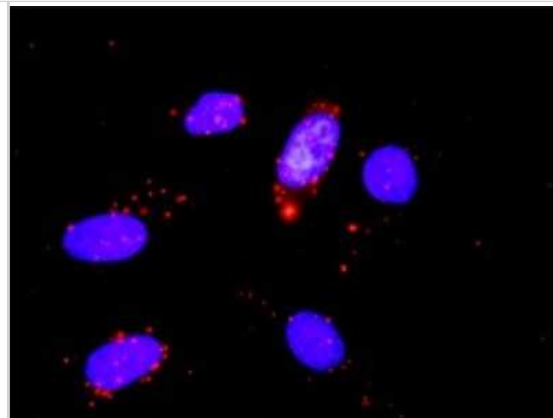
Western Blot: Cdk6 Antibody (8H4) [H00001021-M01] - CDK6 monoclonal antibody (M01), clone 8H4. Analysis of CDK6 expression in PC-12.



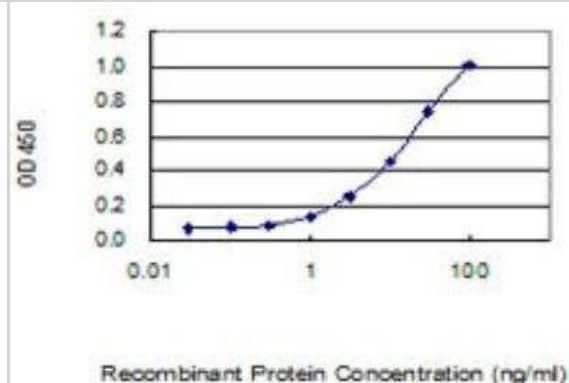
Western Blot: Cdk6 Antibody (8H4) [H00001021-M01] - CDK6 monoclonal antibody (M01), clone 8H4 Analysis of CDK6 expression in Jurkat.



Proximity Ligation Assay: Cdk6 Antibody (8H4) [H00001021-M01] - Analysis of protein-protein interactions between CDK2 and CDK6. HeLa cells were stained with anti-CDK2 rabbit purified polyclonal 1:1200 and anti-CDK6 mouse monoclonal antibody 1:50. Each red dot represents the detection of protein-protein interaction complex, and nuclei were counterstained with DAPI (blue).



ELISA: Cdk6 Antibody (8H4) [H00001021-M01] - Detection limit for recombinant GST tagged CDK6 is 0.3 ng/ml as a capture antibody.



Publications

Shuyan L, Tae S, Marina A et al. Phenotypic Characterization of Targeted Knockdown of Cyclin-Dependent Kinases in the Intestinal Epithelial Cells. *Toxicol Sci.* 2020-09-01 [PMID: 32556214]

Xinjie B, Gengchao W, Shan Y et al. Transcriptomic analysis identifies a tumor subtype mRNA classifier for invasive non-functioning pituitary neuroendocrine tumor diagnostics. *Theranostics.* 2021-01-01 [PMID: 33391466]

Erdmann K, Kaulke K, Rieger C et al. MiR-26a and miR-138 block the G1/S transition by targeting the cell cycle regulating network in prostate cancer cells. *J Cancer Res Clin Oncol* 2016-08-25 [PMID: 27562865]

Quinn J, Glassford J, Percy L et al. APRIL promotes cell-cycle progression in primary multiple myeloma cells: influence of D-type cyclin group and translocation status. *Blood.* 2010-08-13 [PMID: 20709908]



Novus Biologicals USA

10730 E. Briarwood Avenue
Centennial, CO 80112
USA
Phone: 303.730.1950
Toll Free: 1.888.506.6887
Fax: 303.730.1966
nb-customerservice@bio-techne.com

Bio-Techne Canada

21 Canmotor Ave
Toronto, ON M8Z 4E6
Canada
Phone: 905.827.6400
Toll Free: 855.668.8722
Fax: 905.827.6402
canada.inquires@bio-techne.com

Bio-Techne Ltd

19 Barton Lane
Abingdon Science Park
Abingdon, OX14 3NB, United Kingdom
Phone: (44) (0) 1235 529449
Free Phone: 0800 37 34 15
Fax: (44) (0) 1235 533420
info.EMEA@bio-techne.com

General Contact Information

www.novusbio.com
Technical Support: nb-technical@bio-techne.com
Orders: nb-customerservice@bio-techne.com
General: novus@novusbio.com

Products Related to H0001021-M01

HAF007	Goat anti-Mouse IgG Secondary Antibody [HRP]
NB720-B	Rabbit anti-Mouse IgG (H+L) Secondary Antibody [Biotin]
NBP1-43319-0.5mg	Mouse IgG1 Kappa Isotype Control (P3.6.2.8.1)
H0001021-P01-10ug	Recombinant Human Cdk6 GST (N-Term) Protein

Limitations

This product is for research use only and is not approved for use in humans or in clinical diagnosis. Primary Antibodies are guaranteed for 1 year from date of receipt.

For more information on our 100% guarantee, please visit www.novusbio.com/guarantee

Earn gift cards/discounts by submitting a review: www.novusbio.com/reviews/submit/H0001021-M01

Earn gift cards/discounts by submitting a publication using this product:
www.novusbio.com/publications

