

Product Datasheet

CBS Antibody (3E1) H00000875-M01

Unit Size: 0.1 mg

Aliquot and store at -20C or -80C. Avoid freeze-thaw cycles.

www.novusbio.com



technical@novusbio.com

Reviews: 1 **Publications: 57**

Protocols, Publications, Related Products, Reviews, Research Tools and Images at:
www.novusbio.com/H00000875-M01

Updated 10/24/2024 v.20.1

**Earn rewards for product
reviews and publications.**

Submit a publication at www.novusbio.com/publications

Submit a review at www.novusbio.com/reviews/destination/H00000875-M01



H00000875-M01

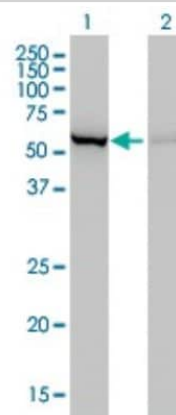
CBS Antibody (3E1)

Product Information	
Unit Size	0.1 mg
Concentration	Concentrations vary lot to lot. See vial label for concentration. If unlisted please contact technical services.
Storage	Aliquot and store at -20C or -80C. Avoid freeze-thaw cycles.
Clonality	Monoclonal
Clone	3E1
Preservative	No Preservative
Isotype	IgG2a Kappa
Purity	IgG purified
Buffer	In 1x PBS, pH 7.4
Product Description	
Description	Quality control test: Antibody Reactive Against Recombinant Protein.
Host	Mouse
Gene ID	875
Gene Symbol	CBS
Species	Human, Mouse, Rat, Porcine, Bacteria
Reactivity Notes	Rat reactivity reported in scientific literature (PMID: 24611772). Mouse reactivity reported in scientific literature (PMID: 22419888).
Specificity/Sensitivity	CBS - cystathionine-beta-synthase
Immunogen	CBS (NP_000062, 1 a.a. ~ 100 a.a) partial recombinant protein with GST tag. MW of the GST tag alone is 26 KDa. MPSETPQAEVGP TGCPHRSGPHSAKGSLEKGSPEDKEAKEPLWIRPDAPSRC TWQLGRPASESPHHHTAPAKSPKILPDILKKIGDTPMVRINKIGKKFG
Notes	This product is produced by and distributed for Abnova, a company based in Taiwan.
Product Application Details	
Applications	Western Blot, ELISA, Immunocytochemistry/ Immunofluorescence, Immunohistochemistry, Immunohistochemistry-Frozen, Immunohistochemistry-Paraffin, Immunoprecipitation, Knockdown Validated
Recommended Dilutions	Western Blot 1:500, ELISA, Immunohistochemistry 1:10-1:500, Immunocytochemistry/ Immunofluorescence, Immunoprecipitation 1:10-1:500, Immunohistochemistry-Paraffin 1:10-1:500, Immunohistochemistry-Frozen, Knockdown Validated
Application Notes	Antibody reactivity against cell lysate, transfected lysate and recombinant protein for WB. It has been used for IHC-P, RNAi Validation and ELISA. ICC/IF usage reported in scientific literature (PMID: 21571312).

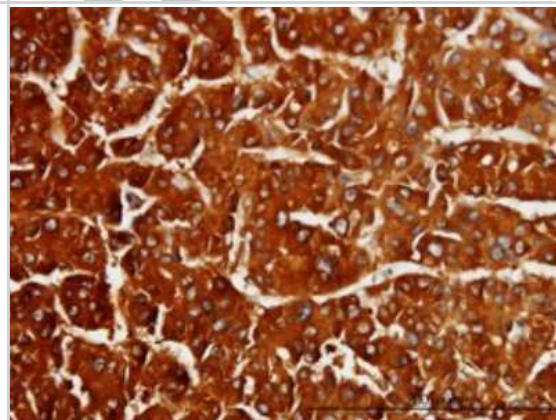


Images

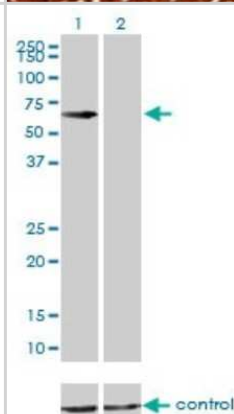
Western Blot: CBS Antibody (3E1) [H00000875-M01] - Analysis of CBS expression in transfected 293T cell line by CBS monoclonal antibody (M01), clone 3E1. Lane 1: CBS transfected lysate (61 kDa). Lane 2: Non-transfected lysate.



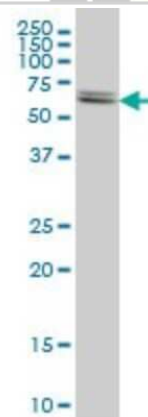
Immunohistochemistry-Paraffin: CBS Antibody (3E1) [H00000875-M01] - Analysis of monoclonal antibody to CBS on formalin-fixed paraffin-embedded human hepatocellular carcinoma. Antibody concentration 3 ug/ml.



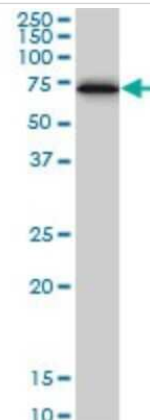
Western Blot: CBS Antibody (3E1) [H00000875-M01] - Analysis of CBS over-expressed 293 cell line, cotransfected with CBS Validated Chimera RNAi (Cat # H00000875-R01V) (Lane 2) or non-transfected control (Lane 1). Blot probed with CBS monoclonal antibody (M01), clone 3E1 (Cat # H00000875-M01). GAPDH (36.1 kDa) used as specificity and loading control.



Western Blot: CBS Antibody (3E1) [H00000875-M01] - CBS monoclonal antibody (M01), clone 3E1 Analysis of CBS expression in HeLa.



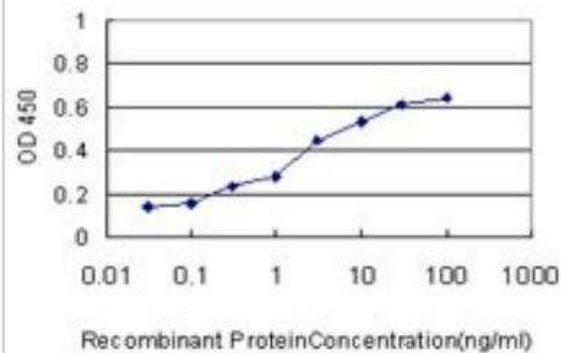
Western Blot: CBS Antibody (3E1) [H00000875-M01] - CBS monoclonal antibody (M01), clone 3E1. Analysis of CBS expression in MCF-7.



Immunoprecipitation: CBS Antibody (3E1) [H00000875-M01] - Analysis of CBS transfected lysate using anti-CBS monoclonal antibody and Protein A Magnetic Bead, and immunoblotted with CBS MaxPab rabbit polyclonal antibody.



ELISA: CBS Antibody (3E1) [H00000875-M01] - Detection limit for recombinant GST tagged CBS is approximately 0.1 ng/ml as a capture antibody.



Publications

Tain Y, Hou C, Chang-Chien G et al. Protection by Means of Perinatal Oral Sodium Thiosulfate Administration against Offspring Hypertension in a Rat Model of Maternal Chronic Kidney Disease Antioxidants 2023-06-26 [PMID: 37507884] (WB, Rat)

Details:

1:500 WB dilution

Halina J, Maria W, Ewa J et al. Sulfurtransferases and Cystathionine Beta-Synthase Expression in Different Human Leukemia Cell Lines. Biomolecules. 2022-01-18 [PMID: 35204649]

Doyoung K, Seung S, Sou K et al. Effects of dietary restriction on hepatic sulfur-containing amino acid metabolism and its significance in acetaminophen-induced liver injury. J Nutr Biochem. 2022-06-10 [PMID: 35697284]

Qamarul A, Tomoaki I, Masanobu M et al. Synthesis of Sulfides and Persulfides Is Not Impeded by Disruption of Three Canonical Enzymes in Sulfur Metabolism. Antioxidants (Basel). 2023-04-03 [PMID: 37107243]

Bibli S, Hu J, Leisegang M et al. Shear stress regulates cystathionine γ lyase expression to preserve endothelial redox balance and reduce membrane lipid peroxidation. Redox Biol. 2019-11-13 [PMID: 31759247]

Fofou-Caillierez MB, Gueant-Rodriguez RM, Alberto JM et al. Vitamin B-12 and liver activity and expression of methionine synthase are decreased in fetuses with neural tube defects Am. J. Clin. Nutr. 2019-03-06 [PMID: 30848279] (WB, Human)

Wang L, Cai H, Hu Y et al. A pharmacological probe identifies cystathionine γ -synthase as a new negative regulator for ferroptosis. Cell Death Dis 2018-09-26 [PMID: 30258181]

Bibli SI, Luck B, Zukunft S et al. A selective and sensitive method for quantification of endogenous polysulfide production in biological samples. Redox Biol 2018-07-21 [PMID: 30077923]

Yuan B, Tang WH, Lu LJ et al. TLR4 upregulates CBS expression through NF- κ B activation in a rat model of irritable bowel syndrome with chronic visceral hypersensitivity. World J Gastroenterol Jul 28 2015 12:00AM

Ohmura M, Hishiki T, Yamamoto T et al. Impacts of CD44 knockdown in cancer cells on tumor and host metabolic systems revealed by quantitative imaging mass spectrometry. Nitric Oxide Nov 11 2014 12:00AM

Hwang SY, Sarna LK, Siow YL et al. High fat diet stimulates hepatic cystathionine γ -synthase and cystathionine γ -lyase expression. Canadian Journal of Physiology and Pharmacology Jun 13 2013 12:00AM

Ren YS, Wu SY, Wang XJ et al. Multiple hemodynamic effects of endogenous hydrogen sulfide on central nervous system in rats. Chin Med J Jun 5 2011 12:00AM

More publications at <http://www.novusbio.com/H00000875-M01>





Novus Biologicals USA

10730 E. Briarwood Avenue
Centennial, CO 80112
USA
Phone: 303.730.1950
Toll Free: 1.888.506.6887
Fax: 303.730.1966
nb-customerservice@bio-techne.com

Bio-Techne Canada

21 Canmotor Ave
Toronto, ON M8Z 4E6
Canada
Phone: 905.827.6400
Toll Free: 855.668.8722
Fax: 905.827.6402
canada.inquires@bio-techne.com

Bio-Techne Ltd

19 Barton Lane
Abingdon Science Park
Abingdon, OX14 3NB, United Kingdom
Phone: (44) (0) 1235 529449
Free Phone: 0800 37 34 15
Fax: (44) (0) 1235 533420
info.EMEA@bio-techne.com

General Contact Information

www.novusbio.com
Technical Support: nb-technical@bio-
techne.com
Orders: nb-customerservice@bio-techne.com
General: novus@novusbio.com

Limitations

This product is for research use only and is not approved for use in humans or in clinical diagnosis. Primary Antibodies are guaranteed for 1 year from date of receipt.

For more information on our 100% guarantee, please visit www.novusbio.com/guarantee

Earn gift cards/discounts by submitting a review: www.novusbio.com/reviews/submit/H00000875-M01

Earn gift cards/discounts by submitting a publication using this product:
www.novusbio.com/publications

