

Product Datasheet

CaM Kinase II alpha Antibody (2C4) - Azide and BSA Free H00000815-M01

Unit Size: 0.1 mg

Aliquot and store at -20C or -80C. Avoid freeze-thaw cycles.

www.novusbio.com



technical@novusbio.com

Protocols, Publications, Related Products, Reviews, Research Tools and Images at:
www.novusbio.com/H00000815-M01

Updated 2/21/2025 v.20.1

Earn rewards for product
reviews and publications.

Submit a publication at www.novusbio.com/publications

Submit a review at www.novusbio.com/reviews/destination/H00000815-M01

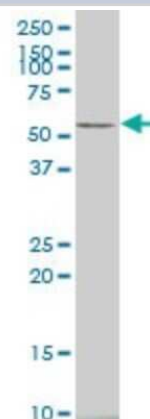


H00000815-M01**CaM Kinase II alpha Antibody (2C4) - Azide and BSA Free**

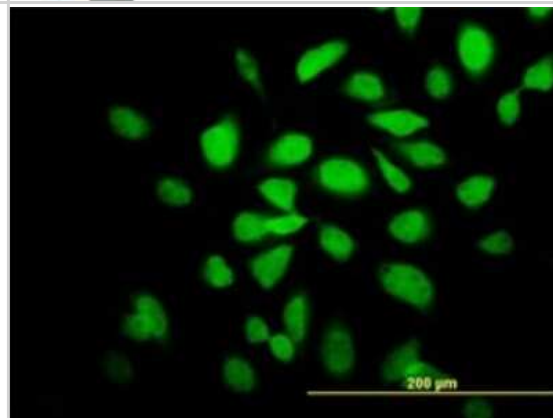
Product Information	
Unit Size	0.1 mg
Concentration	Concentrations vary lot to lot. See vial label for concentration. If unlisted please contact technical services.
Storage	Aliquot and store at -20C or -80C. Avoid freeze-thaw cycles.
Clonality	Monoclonal
Clone	2C4
Preservative	No Preservative
Isotype	IgG2a Kappa
Purity	IgG purified
Buffer	In 1x PBS, pH 7.4
Product Description	
Description	Quality control test: Antibody Reactive Against Recombinant Protein.
Host	Mouse
Gene ID	815
Gene Symbol	CAMK2A
Species	Human, Rat
Specificity/Sensitivity	calcium/calmodulin-dependent protein kinase (CaM kinase) II alpha
Immunogen	CAMK2A (AAH40457, 305 a.a. ~ 410 a.a) partial recombinant protein with GST tag. MW of the GST tag alone is 26 KDa. TTMLATRNFSGGKSGGNKKSDGVKESSESTNTTIEDEDTKVRKQEIIKVTEQLIE AISNGDFESYTKMCDPGMTAFEPALGNLVEGLDFHRFYFENLWSRNSKPV
Notes	This product is produced by and distributed for Abnova, a company based in Taiwan.
Product Application Details	
Applications	Western Blot, ELISA, Immunocytochemistry/ Immunofluorescence, Sandwich ELISA
Recommended Dilutions	Western Blot 1:500, ELISA, Immunocytochemistry/ Immunofluorescence, Sandwich ELISA
Application Notes	Antibody reactivity against tissue lysate, cell lysate and recombinant protein for WB. It has been used for IF and ELISA.

Images

Western Blot: CaM Kinase II alpha Antibody (2C4) [H00000815-M01] - CAMK2A monoclonal antibody (M01), clone 2C4. Analysis of CAMK2A expression in human stomach.



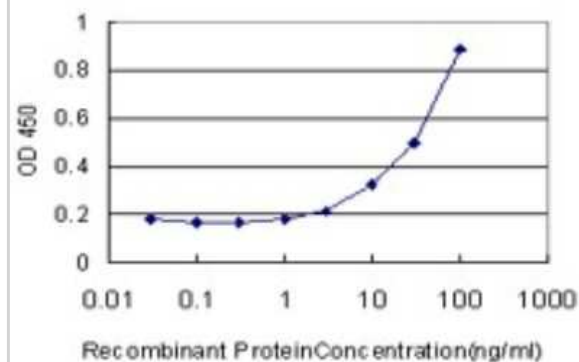
Immunocytochemistry/Immunofluorescence: CaM Kinase II alpha Antibody (2C4) [H00000815-M01] - Analysis of monoclonal antibody to CAMK2A on HeLa cell. Antibody concentration 10 ug/ml.



Western Blot: CaM Kinase II alpha Antibody (2C4) [H00000815-M01] - CAMK2A monoclonal antibody (M01), clone 2C4. Analysis of CAMK2A expression in RIN-m5F.



Sandwich ELISA: CaM Kinase II alpha Antibody (2C4) [H00000815-M01] - Detection limit for recombinant GST tagged CAMK2A is approximately 3ng/ml as a capture antibody.





Novus Biologicals USA

10730 E. Briarwood Avenue
Centennial, CO 80112
USA
Phone: 303.730.1950
Toll Free: 1.888.506.6887
Fax: 303.730.1966
nb-customerservice@bio-techne.com

Bio-Techne Canada

21 Canmotor Ave
Toronto, ON M8Z 4E6
Canada
Phone: 905.827.6400
Toll Free: 855.668.8722
Fax: 905.827.6402
canada.inquires@bio-techne.com

Bio-Techne Ltd

19 Barton Lane
Abingdon Science Park
Abingdon, OX14 3NB, United Kingdom
Phone: (44) (0) 1235 529449
Free Phone: 0800 37 34 15
Fax: (44) (0) 1235 533420
info.EMEA@bio-techne.com

General Contact Information

www.novusbio.com
Technical Support: nb-technical@bio-techne.com
Orders: nb-customerservice@bio-techne.com
General: novus@novusbio.com

Products Related to H0000815-M01

HAF007	Goat anti-Mouse IgG Secondary Antibody [HRP]
NB720-B	Rabbit anti-Mouse IgG (H+L) Secondary Antibody [Biotin]
NBP1-96981-0.5mg	Mouse IgG2a Kappa Isotype Control (M2AK)
H0000815-P01-10ug	Recombinant Human CaM Kinase II alpha GST (N-Term) Protein

Limitations

This product is for research use only and is not approved for use in humans or in clinical diagnosis. Primary Antibodies are guaranteed for 1 year from date of receipt.

For more information on our 100% guarantee, please visit www.novusbio.com/guarantee

Earn gift cards/discounts by submitting a review: www.novusbio.com/reviews/submit/H0000815-M01

Earn gift cards/discounts by submitting a publication using this product:
www.novusbio.com/publications

