

Product Datasheet

ATF4 Antibody Pair H00000468-AP11

Unit Size: 1 Set

Aliquot and store at -20C or -80C. Avoid freeze-thaw cycles.

www.novusbio.com



technical@novusbio.com

Publications: 1

Protocols, Publications, Related Products, Reviews, Research Tools and Images at:
www.novusbio.com/H00000468-AP11

Updated 10/23/2024 v.20.1

Earn rewards for product
reviews and publications.

Submit a publication at www.novusbio.com/publications

Submit a review at www.novusbio.com/reviews/destination/H00000468-AP11



H00000468-AP11**ATF4 Antibody Pair**

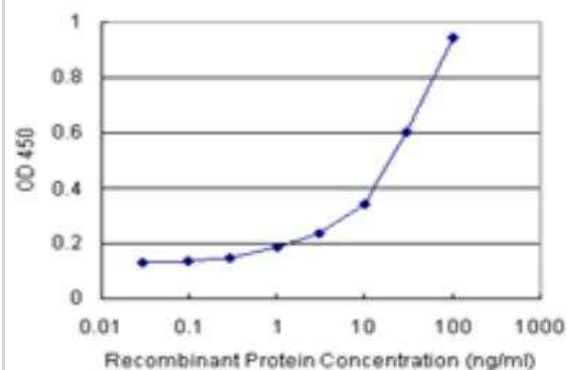
Product Information	
Unit Size	1 Set
Concentration	Concentration of individual antibodies may be found on the vial label. If unlisted please contact technical services.
Storage	Aliquot and store at -20C or -80C. Avoid freeze-thaw cycles.
Buffer	1x PBS, pH 7.4

Product Description	
Description	Quality control test: Standard curve using recombinant protein (H00000468-P01) as an analyte. This antibody pair set comes with matched antibody pair to detect and quantify protein level of human ATF4.
Gene ID	468
Gene Symbol	ATF4
Species	Human
Kit Components	Capture antibody: rabbit MaxPab affinity purified polyclonal anti-ATF4 (100 ug), Detection antibody: mouse monoclonal anti-ATF4 IgG1 Kappa (20 ug)
Notes	This product is produced by and distributed for Abnova, a company based in Taiwan.
Standard Curve Range	3 ng/ml to 100 ng/ml
Assay Type	Sandwich ELISA

Product Application Details	
Applications	Sandwich ELISA
Recommended Dilutions	Sandwich ELISA 3 ng/ml - 100 ng/ml
Application Notes	Reagents are sufficient for at least 1-2 x 96 well plates using recommended protocols.

Images

Sandwich ELISA: ATF4 Antibody Pair [H00000468-AP11] - detection sensitivity ranging from 3 ng/ml to 100 ng/ml.

**Publications**

Gao D, Bambang IF, Putti TC et al. ERp29 induces breast cancer cell growth arrest and survival through modulation of activation of p38 and upregulation of ER stress protein p58(IPK). Lab Invest;doi: 10.1038/labinvest.2011.163. 2011-11-07 [PMID: 22064321]



Novus Biologicals USA

10730 E. Briarwood Avenue
Centennial, CO 80112
USA
Phone: 303.730.1950
Toll Free: 1.888.506.6887
Fax: 303.730.1966
nb-customerservice@bio-techne.com

Bio-Techne Canada

21 Canmotor Ave
Toronto, ON M8Z 4E6
Canada
Phone: 905.827.6400
Toll Free: 855.668.8722
Fax: 905.827.6402
canada.inquires@bio-techne.com

Bio-Techne Ltd

19 Barton Lane
Abingdon Science Park
Abingdon, OX14 3NB, United Kingdom
Phone: (44) (0) 1235 529449
Free Phone: 0800 37 34 15
Fax: (44) (0) 1235 533420
info.EMEA@bio-techne.com

General Contact Information

www.novusbio.com
Technical Support: nb-technical@bio-techne.com
Orders: nb-customerservice@bio-techne.com
General: novus@novusbio.com

Products Related to H00000468-AP11

NBP1-72383-50ug	Recombinant Human ATF4 His-Cam Protein
NB100-2323	IRE1 alpha [p Ser724] Antibody - BSA Free
NB100-852	ATF4 Antibody
NBP1-40256-0.1mg	ATF6 Antibody (70B1413.1) - BSA Free

Limitations

This product is for research use only and is not approved for use in humans or in clinical diagnosis. Antibody Pairs are guaranteed for 6 months from date of receipt.

For more information on our 100% guarantee, please visit www.novusbio.com/guarantee

Earn gift cards/discounts by submitting a review: www.novusbio.com/reviews/submit/H00000468-AP11

Earn gift cards/discounts by submitting a publication using this product:
www.novusbio.com/publications

