

Product Datasheet

ALPPL2 Antibody (2B3) - Azide and BSA Free H00000251-M07

Unit Size: 0.1 mg

Aliquot and store at -20C or -80C. Avoid freeze-thaw cycles.

www.novusbio.com



technical@novusbio.com

Protocols, Publications, Related Products, Reviews, Research Tools and Images at:
www.novusbio.com/H00000251-M07

Updated 2/21/2025 v.20.1

Earn rewards for product
reviews and publications.

Submit a publication at www.novusbio.com/publications

Submit a review at www.novusbio.com/reviews/destination/H00000251-M07



H00000251-M07

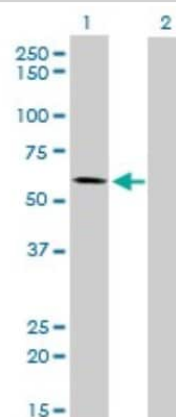
ALPPL2 Antibody (2B3) - Azide and BSA Free

Product Information	
Unit Size	0.1 mg
Concentration	Concentrations vary lot to lot. See vial label for concentration. If unlisted please contact technical services.
Storage	Aliquot and store at -20C or -80C. Avoid freeze-thaw cycles.
Clonality	Monoclonal
Clone	2B3
Preservative	No Preservative
Isotype	IgG2a Kappa
Purity	IgG purified
Buffer	In 1x PBS, pH 7.4
Product Description	
Description	Quality control test: Antibody Reactive Against Recombinant Protein.
Host	Mouse
Gene ID	251
Gene Symbol	ALPG
Species	Human
Specificity/Sensitivity	ALPPL2 - alkaline phosphatase, placental-like 2
Immunogen	ALPPL2 (NP_112603, 365 a.a. ~ 454 a.a) partial recombinant protein with GST tag. MW of the GST tag alone is 26 KDa. SEEDTLSLVTADHSHVFSFGGYPLRGSSIFGLAPGKARDRKAYTVLLYGNGPG YVLKDGARPDVTESESGSPEYRQQSAVPLDGETHAGE
Notes	This product is produced by and distributed for Abnova, a company based in Taiwan.
Product Application Details	
Applications	Western Blot, ELISA, Immunohistochemistry, Immunohistochemistry-Paraffin, Immunoprecipitation, Sandwich ELISA, Sandwich ELISA Capture, Knockdown Validated
Recommended Dilutions	Western Blot 1:100-1:2000, ELISA, Immunohistochemistry 1:10-1:500, Immunoprecipitation, Immunohistochemistry-Paraffin 1:10-1:500, Sandwich ELISA, Sandwich ELISA Capture, Knockdown Validated
Application Notes	Antibody reactivity against cell lysate and recombinant protein for WB. It has also been used for IHC-P, RNAi Validation and ELISA.

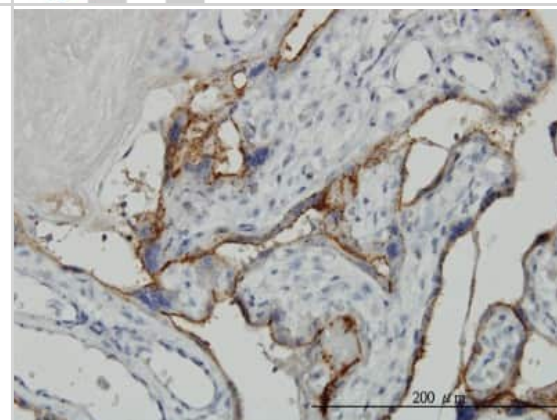


Images

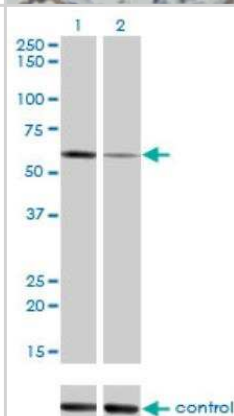
Western Blot: ALPPL2 Antibody (2B3) [H00000251-M07] - Analysis of ALPPL2 expression in transfected 293T cell line by ALPPL2 monoclonal antibody (M07), clone 2B3. Lane 1: ALPPL2 transfected lysate (57.5 kDa). Lane 2: Non-transfected lysate.



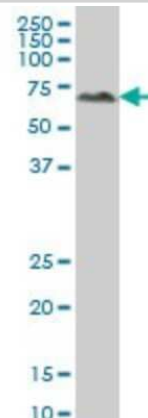
Immunohistochemistry-Paraffin: ALPPL2 Antibody (2B3) [H00000251-M07] - Analysis of monoclonal antibody to ALPPL2 on formalin-fixed paraffin-embedded human placenta. Antibody concentration 3 ug/ml



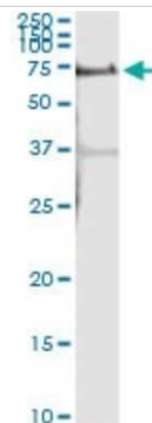
Western Blot: ALPPL2 Antibody (2B3) [H00000251-M07] - ALPPL2 over-expressed 293 cell line. Lane 2 cotransfected with ALPPL2 Validated Chimera RNAi Lane 1 non-transfected control. Blot probed with H00000251-M07. GAPDH (36.1 kDa) used as loading control.



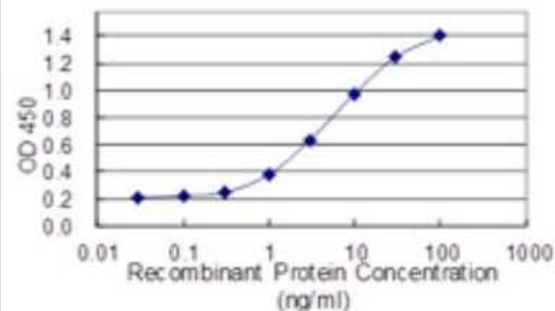
Western Blot: ALPPL2 Antibody (2B3) [H00000251-M07] - Analysis of ALPPL2 expression in A-431 (Cat # L015V1).



Immunoprecipitation: ALPPL2 Antibody (2B3) [H00000251-M07] - Analysis of ALPPL2 transfected lysate using anti-ALPPL2 monoclonal antibody and Protein A Magnetic Bead, and immunoblotted with ALPPL2 rabbit polyclonal antibody.



Sandwich ELISA Capture: ALPPL2 Antibody (2B3) [H00000251-M07] - Detection limit for recombinant GST tagged ALPPL2 is 0.1 ng/ml as a capture antibody.





Novus Biologicals USA

10730 E. Briarwood Avenue
Centennial, CO 80112
USA
Phone: 303.730.1950
Toll Free: 1.888.506.6887
Fax: 303.730.1966
nb-customerservice@bio-techne.com

Bio-Techne Canada

21 Canmotor Ave
Toronto, ON M8Z 4E6
Canada
Phone: 905.827.6400
Toll Free: 855.668.8722
Fax: 905.827.6402
canada.inquires@bio-techne.com

Bio-Techne Ltd

19 Barton Lane
Abingdon Science Park
Abingdon, OX14 3NB, United Kingdom
Phone: (44) (0) 1235 529449
Free Phone: 0800 37 34 15
Fax: (44) (0) 1235 533420
info.EMEA@bio-techne.com

General Contact Information

www.novusbio.com
Technical Support: nb-technical@bio-techne.com
Orders: nb-customerservice@bio-techne.com
General: novus@novusbio.com

Products Related to H00000251-M07

HAF007	Goat anti-Mouse IgG Secondary Antibody [HRP]
NB720-B	Rabbit anti-Mouse IgG (H+L) Secondary Antibody [Biotin]
NBP1-96981-0.5mg	Mouse IgG2a Kappa Isotype Control (M2AK)
H00000251-P01-10ug	Recombinant Human ALPPL2 GST (N-Term) Protein

Limitations

This product is for research use only and is not approved for use in humans or in clinical diagnosis. Primary Antibodies are guaranteed for 1 year from date of receipt.

For more information on our 100% guarantee, please visit www.novusbio.com/guarantee

Earn gift cards/discounts by submitting a review: www.novusbio.com/reviews/submit/H00000251-M07

Earn gift cards/discounts by submitting a publication using this product:
www.novusbio.com/publications

