

Product Datasheet

alpha-Smooth Muscle Actin Antibody Pair H00000059-AP41

Unit Size: 1 Set

Aliquot and store at -20C or -80C. Avoid freeze-thaw cycles.

www.novusbio.com



technical@novusbio.com

Protocols, Publications, Related Products, Reviews, Research Tools and Images at:
www.novusbio.com/H00000059-AP41

Updated 10/23/2024 v.20.1

Earn rewards for product
reviews and publications.

Submit a publication at www.novusbio.com/publications

Submit a review at www.novusbio.com/reviews/destination/H00000059-AP41



H00000059-AP41

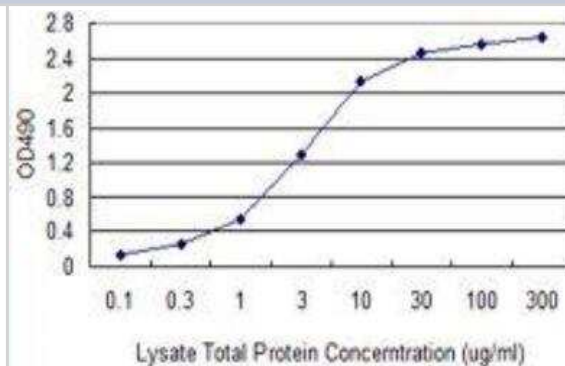
alpha-Smooth Muscle Actin Antibody Pair

| Product Information | |
|------------------------------------|--|
| Unit Size | 1 Set |
| Concentration | Concentration of individual antibodies may be found on the vial label. If unlisted please contact technical services. |
| Storage | Aliquot and store at -20C or -80C. Avoid freeze-thaw cycles. |
| Buffer | 1x PBS, pH 7.4 |
| Product Description | |
| Description | Quality control test: Standard curve using recombinant protein (H00000059-P01) as an analyte. This antibody pair set comes with matched antibody pair to detect and quantify protein level of human ACTA2. |
| Gene ID | 59 |
| Gene Symbol | ACTA2 |
| Species | Human |
| Kit Components | Capture antibody: mouse monoclonal anti-ACTA2 IgG2b Kappa (100 ug), Detection antibody: biotinylated mouse monoclonal anti-ACTA2 IgG1 Kappa (50 ug) |
| Notes | This product is produced by and distributed for Abnova, a company based in Taiwan. |
| Standard Curve Range | 0.3 ng/ml-100 ng/ml |
| Assay Type | Sandwich ELISA |
| Product Application Details | |
| Applications | Sandwich ELISA |
| Recommended Dilutions | Sandwich ELISA 0.3 ng/ml - 100 ng/ml |
| Application Notes | Reagents are sufficient for at least 3-5 x 96 well plates using recommended protocols. |

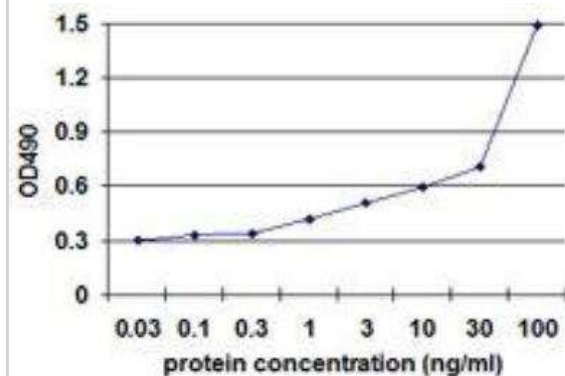


Images

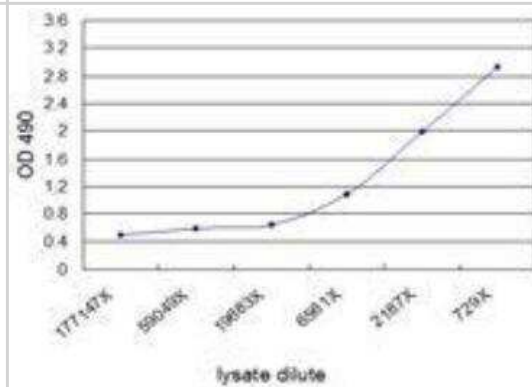
ELISA: alpha-Smooth Muscle Actin Antibody Pair [H00000059-AP41] - Standard curve using human uterus myoma tissue lysate as an analyte (non-denatured). Sandwich ELISA detection sensitivity ranging from 100 ng/ml to 300 ug/ml for lysate total protein.



ELISA: alpha-Smooth Muscle Actin Antibody Pair [H00000059-AP41] - Standard curve using recombinant protein (H00000059-P01) as an analyte. Sandwich ELISA detection sensitivity ranging from 0.3 ng/ml to 100 ng/ml.



Sandwich ELISA: alpha-Smooth Muscle Actin Antibody Pair [H00000059-AP41] - Detection sensitivity ranging from approximately 6561x to 729x dilution of the alpha-Smooth Muscle Actin 293T overexpression lysate (non-denatured). Standard curve using alpha-Smooth Muscle Actin 293T overexpression lysate (non-denatured) as an analyte.





Novus Biologicals USA

10730 E. Briarwood Avenue
Centennial, CO 80112
USA
Phone: 303.730.1950
Toll Free: 1.888.506.6887
Fax: 303.730.1966
nb-customerservice@bio-techne.com

Bio-Techne Canada

21 Canmotor Ave
Toronto, ON M8Z 4E6
Canada
Phone: 905.827.6400
Toll Free: 855.668.8722
Fax: 905.827.6402
canada.inquires@bio-techne.com

Bio-Techne Ltd

19 Barton Lane
Abingdon Science Park
Abingdon, OX14 3NB, United Kingdom
Phone: (44) (0) 1235 529449
Free Phone: 0800 37 34 15
Fax: (44) (0) 1235 533420
info.EMEA@bio-techne.com

General Contact Information

www.novusbio.com
Technical Support: nb-technical@bio-techne.com
Orders: nb-customerservice@bio-techne.com
General: novus@novusbio.com

Products Related to H0000059-AP41

| | |
|-------------------|--|
| H0000059-P01-10ug | Recombinant Human alpha-Smooth Muscle Actin GST (N-Term) Protein |
| DVE00 | VEGF [HRP] |
| NB300-978 | alpha-Smooth Muscle Actin Antibody |
| 233-FB-025 | FGF basic/FGF2/bFGF [Unconjugated] |

Limitations

This product is for research use only and is not approved for use in humans or in clinical diagnosis. Antibody Pairs are guaranteed for 6 months from date of receipt.

For more information on our 100% guarantee, please visit www.novusbio.com/guarantee

Earn gift cards/discounts by submitting a review: www.novusbio.com/reviews/submit/H0000059-AP41

Earn gift cards/discounts by submitting a publication using this product:
www.novusbio.com/publications

