

Product Datasheet

Recombinant Human NAT2 GST (N-Term) Protein H00000010-Q01-10ug

Unit Size: 10 ug

Store at -80C. Avoid freeze-thaw cycles.

www.novusbio.com



technical@novusbio.com

Protocols, Publications, Related Products, Reviews, Research Tools and Images at:
www.novusbio.com/H00000010-Q01

Updated 10/23/2024 v.20.1

Earn rewards for product
reviews and publications.

Submit a publication at www.novusbio.com/publications

Submit a review at www.novusbio.com/reviews/destination/H00000010-Q01



H00000010-Q01-10ug

Recombinant Human NAT2 GST (N-Term) Protein

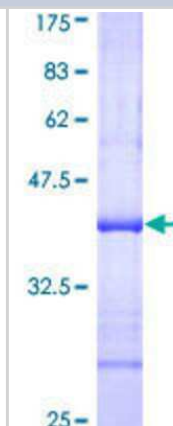
| Product Information | |
|---------------------|---|
| Unit Size | 10 ug |
| Concentration | Please see the vial label for concentration. If unlisted please contact technical services. |
| Storage | Store at -80C. Avoid freeze-thaw cycles. |
| Preservative | No Preservative |
| Purity | >80% by SDS-PAGE and Coomassie blue staining |
| Buffer | 50 mM Tris-HCl, 10 mM reduced Glutathione, pH 8.0 in the elution buffer. |

| Product Description | |
|--------------------------|---|
| Description | <p>A recombinant protein with a N-terminal GST tag corresponding to the amino acids 1-100 of Human NAT2</p> <p>Source: <i>Wheat Germ (in vitro)</i></p> <p>Amino Acid Sequence: PPV NKYSTGMVHLLLQVTIDGRNYIVDAGSGSSSQMWQPLELISGKDQPQVPC IFCLTEERGIWYLDQIRREQYITNKEFLNSHLLPKKKHQKIYLF TLE</p> |
| Gene ID | 10 |
| Gene Symbol | NAT2 |
| Species | Human |
| Preparation Method | in vitro wheat germ expression system |
| Details of Functionality | This protein was produced in an in vitro wheat germ expression system that should preserve correct conformational folding that is necessary for biological function. While it is possible that this protein could display some level of activity, the functionality of this protein has not been explicitly measured or validated. |
| Notes | This product is produced by and distributed for Abnova, a company based in Taiwan. |

| Product Application Details | |
|-----------------------------|---|
| Applications | Western Blot, ELISA, Protein Array, Immunoaffinity Purification |
| Recommended Dilutions | Western Blot, ELISA, Protein Array, Immunoaffinity Purification |

Images

12.5% SDS-PAGE Stained with Coomassie Blue.





Novus Biologicals USA

10730 E. Briarwood Avenue
Centennial, CO 80112
USA

Phone: 303.730.1950

Toll Free: 1.888.506.6887

Fax: 303.730.1966

nb-customerservice@bio-techne.com

Bio-Techne Canada

21 Canmotor Ave
Toronto, ON M8Z 4E6
Canada

Phone: 905.827.6400

Toll Free: 855.668.8722

Fax: 905.827.6402

canada.inquires@bio-techne.com

Bio-Techne Ltd

19 Barton Lane
Abingdon Science Park
Abingdon, OX14 3NB, United Kingdom

Phone: (44) (0) 1235 529449

Free Phone: 0800 37 34 15

Fax: (44) (0) 1235 533420

info.EMEA@bio-techne.com

General Contact Information

www.novusbio.com

Technical Support: nb-technical@bio-techne.com

Orders: nb-customerservice@bio-techne.com

General: novus@novusbio.com

Products Related to H00000010-Q01-10ug

| | |
|--------------------|---|
| H00000010-P02-10ug | Recombinant Human NAT2 GST (N-Term) Protein |
| NB600-326 | GST Epitope Tag Antibody - BSA Free |
| NBP1-33751 | NAT2 Antibody |
| NBP2-16756 | Glutathione S-Transferase pi 1/GSTP1 Antibody |

Limitations

This product is for research use only and is not approved for use in humans or in clinical diagnosis. Peptides and proteins are guaranteed for 3 months from date of receipt.

For more information on our 100% guarantee, please visit www.novusbio.com/guarantee

Earn gift cards/discounts by submitting a review: www.novusbio.com/reviews/submit/H00000010-Q01

Earn gift cards/discounts by submitting a publication using this product:
www.novusbio.com/publications

