

Product Datasheet

Lightning-Link (R) R-PE Antibody Labeling Kit 703-0030

Unit Size: 3 x 10ug Reaction

Store at -20C.

www.novusbio.com



technical@novusbio.com

Reviews: 1 Publications: 48

Protocols, Publications, Related Products, Reviews, Research Tools and Images at:
www.novusbio.com/703-0030

Updated 10/23/2024 v.20.1

**Earn rewards for product
reviews and publications.**

Submit a publication at www.novusbio.com/publications

Submit a review at www.novusbio.com/reviews/destination/703-0030



703-0030**Lightning-Link (R) R-PE Antibody Labeling Kit**

Product Information	
Unit Size	3 x 10ug Reaction
Concentration	Concentration is not relevant for this product. Please see the protocols for proper use of this product.
Storage	Store at -20C.
Conjugate	R-Phycoerythrin
Product Description	
Description	<p>Lightning-Link antibody labeling kits enable the direct labeling of antibodies, proteins, peptides or other biomolecules for use in R&D applications, drug discovery and the development of diagnostic kits (See protocol for further information).</p> <p>Our R-PE antibody labeling kit enables the direct conjugation of R-PE to any biomolecule with an available amine group. The researcher simply pipettes the antibody or other biomolecule into the vial of Lightning-Link R-PE and incubates for 3 hours.</p> <p>FeaturesQuick and easy to use BenefitsSave time, no special knowledge required No separation steps 100% recovery - no antibody/protein loss Can be used in a wide range of applications Flexible Freeze dried Ships at ambient temperature, long shelf-life Fully scalable (10 ug to 1 g or more) Easy transfer from R&D to manufacturing Stringently QC tested Consistent high quality, excellent batch-to-batch reproducibility Large number of labels available Experimental flexibility Reliable: nearly 300 references Successfully used in many fields of research</p> <p>R-Phycoerythrin (R-PE) is a fluorescent protein from the phycobiliprotein family, present in red algae and cryptophytes. It has three maximal absorbance values of 498, 544 and 566nm (the optimal will depend on the application), and it has a strong emission peak at 580nm. RPE is closely related to B-Phycoerythrin (B-PE) and these are the most intense fluorescent phycobiliproteins providing an orange fluorescence.</p> <p>Learn more about Lightning-Link™ Conjugation Kits by reading FAQs</p> <p>For more information please check out these useful links! Antibody Labeling Guide Antibody Conjugation Illustrated Assay</p> <p>T</p>
Kit Components	1 or 3 or 5 glass vial(s) of Lightning-Link mix, 1 vial of LL-Modifier reagent, 1 vial of LL-Quencher reagent

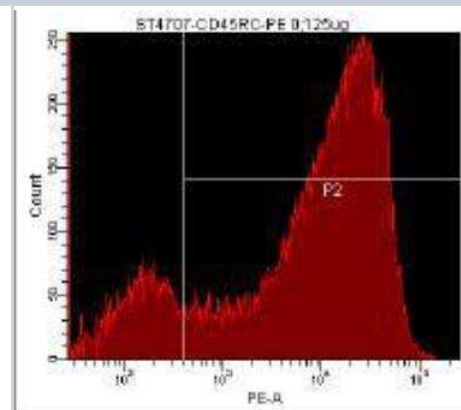
Notes	<p>This product is manufactured by Abcam and distributed by Novus Biologicals.</p> <p>This product is for research use only and is not approved for use in humans or in clinical diagnosis. This product is guaranteed for 1 year from date of receipt and this statement overrides any mentioned guarantee period on the limitations section of this products datasheet. Please contact technical@novusbio.com with questions.</p> <p>This product is for research use only and is not approved for use in humans or in clinical diagnosis. This product is guaranteed for 1 year from date of receipt and this statement overrides any mentioned guarantee period on the limitations section of this products datasheet. Please contact technical@novusbio.com with questions.</p>
--------------	--

Product Application Details	
Applications	Flow Cytometry
Recommended Dilutions	Flow Cytometry
Application Notes	<p>The recommended conjugation conditions are based on using a 1mg/ml antibody concentration and are designed to give a 1:1 Ab:RPE conjugation molar ratio. Antibodies greater than 1mg/ml should be diluted to 1mg/ml using either milli-Q water or PBS. This kit is supplied with 3 vials, each suitable for labeling up to 10 ug of antibody.</p>

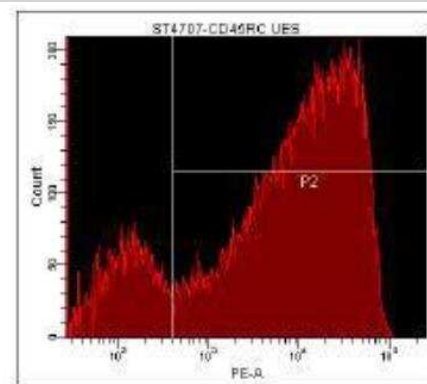


Images

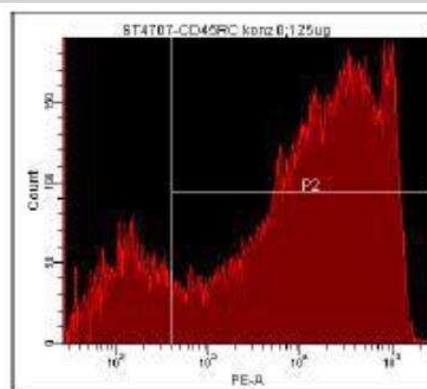
Flow Cytometry: Lightning-Link R-PE Antibody Labeling Kit [703-0030] - Direct labeling with Lightning Link CD45RC-PE



Flow Cytometry: Lightning-Link R-PE Antibody Labeling Kit [703-0030] - Indirect labeling with CD45RC supernatant



Flow Cytometry: Lightning-Link R-PE Antibody Labeling Kit [703-0030] - Indirect labeling with purified CD45RC antibody



Publications

Shanmugasundaram R, Wick M, Lilburn MS. Effect of embryonic thermal manipulation on heat shock protein 70 (HSP70) expression and subsequent immune response to post-hatch lipopolysaccharide challenge in Pekin ducklings. *Poult. Sci.* 2018-10-04 [PMID: 30285148]

Kinchen J, Chen HH, Parikh K et al. Structural Remodeling of the Human Colonic Mesenchyme in Inflammatory Bowel Disease. *Cell* 2018-09-25 [PMID: 30270042]

Jelsma T, van der Wal FJ, Fijten H et al. Pre-screening of crude peptides in a serological bead-based suspension array. *J Virol Methods.* 2017-01-01 [PMID: 28545817]

Charlermroj R, Makornwattana M, Himananto O et al. An accurate, specific, sensitive, high-throughput method based on a microsphere immunoassay for multiplex detection of three viruses and bacterial fruit blotch bacterium in cucurbits. *J Virol Methods.* 2017-01-01 [PMID: 28502647]

Tafalla C, Gonzalez L, Castro R, Granja AG. B Cell-Activating Factor Regulates Different Aspects of B Cell Functionality and Is Produced by a Subset of Splenic B Cells in Teleost Fish. *Front Immunol.* 2017-03-15 [PMID: 28360916]

Hadadi E, Zhang B, Baidzajevs K et al. Differential IL-1beta secretion by monocyte subsets is regulated by Hsp27 through modulating mRNA stability. *Sci Rep.* 2016-12-15 [PMID: 27976724]

Charlermroj R, Makornwattana M, Grant IR et al. Validation of a high-throughput immunobead array technique for multiplex detection of three foodborne pathogens in chicken products. *Int J Food Microbiol.* 2016-05-02 [PMID: 26950032]

Gao Y, Pallister J, Lapierre F et al. A rapid assay for Hendra virus IgG antibody detection and its titre estimation using magnetic nanoparticles and phycoerythrin. *J Virol Methods.* 2015-09-15 [PMID: 26141730]

Frederick JR, Fitzpatrick JR 3rd, McCormick RC et al. Stromal Cell-Derived Factor-1alpha Activation of Tissue-Engineered Endothelial Progenitor Cell Matrix Enhances Ventricular Function After Myocardial Infarction by Inducing Neovascuogenesis. *Circulation.* 2010-09-14 [PMID: 20837901]

Nagaraj V, King B, Storm P et al. Complement inhibitor CD55 governs the integrity of membrane rafts in pancreatic beta cells, but plays no role in insulin secretion *Biochem Biophys Res Commun.* 2015-05-08 [PMID: 25797618] (FLOW)

Karagiannis P, Villanova F, Josephs DH et al. Elevated IgG4 in patient circulation is associated with the risk of disease progression in melanoma *Oncoimmunology* 2015-06-03 [PMID: 26451312] (FLOW)

Yu X, Rui L, Shao Q et al. Changes of CD4+CD25+ Cells Ratio in Immune Organs from Chickens Challenged with Infectious Bursal Disease Virus Strains with Varying Virulences *Viruses* 2015-03-20 [PMID: 25803101] (FLOW)

More publications at <http://www.novusbio.com/703-0030>





Novus Biologicals USA

10730 E. Briarwood Avenue
Centennial, CO 80112
USA
Phone: 303.730.1950
Toll Free: 1.888.506.6887
Fax: 303.730.1966
nb-customerservice@bio-techne.com

Bio-Techne Canada

21 Canmotor Ave
Toronto, ON M8Z 4E6
Canada
Phone: 905.827.6400
Toll Free: 855.668.8722
Fax: 905.827.6402
canada.inquires@bio-techne.com

Bio-Techne Ltd

19 Barton Lane
Abingdon Science Park
Abingdon, OX14 3NB, United Kingdom
Phone: (44) (0) 1235 529449
Free Phone: 0800 37 34 15
Fax: (44) (0) 1235 533420
info.EMEA@bio-techne.com

General Contact Information

www.novusbio.com
Technical Support: nb-technical@bio-techne.com
Orders: nb-customerservice@bio-techne.com
General: novus@novusbio.com

Limitations

This product is for research use only and is not approved for use in humans or in clinical diagnosis. Kits are guaranteed for 6 months from date of receipt.

For more information on our 100% guarantee, please visit www.novusbio.com/guarantee

Earn gift cards/discounts by submitting a review: www.novusbio.com/reviews/submit/703-0030

Earn gift cards/discounts by submitting a publication using this product:
www.novusbio.com/publications

