

Compass for iCE 3.0 and Instrument Software Installation Guide

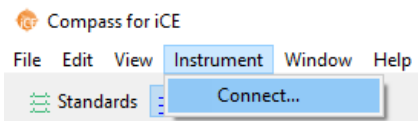
Before You Start

Note: Compass for iCE and Maurice embedded software must be matched to utilize all the available features and ensure proper performance. Contact Technical Support with your system serial number and the versions currently installed for both Compass for iCE and Maurice embedded software.

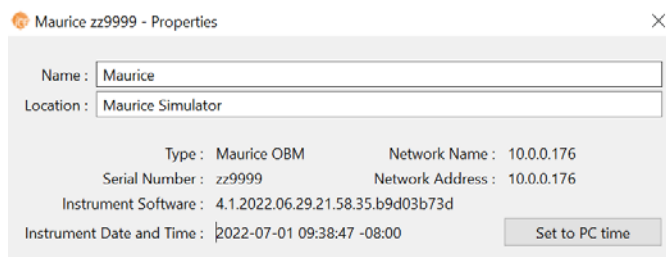
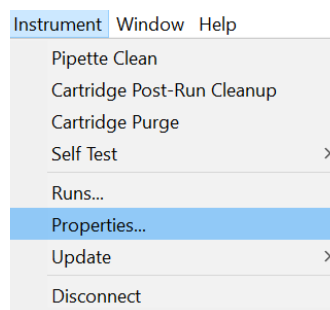
If your system is in a QC environment and you require a requalification after upgrading the software, our contracts team can provide you a quote for both the upgrade and qualification services. **Requalification is not covered under service plans or warranty.**

Determining the Instrument Serial Number

1. Open Compass for iCE software.
2. Select **Instrument** in the main menu and click **Connect** to connect to Maurice.

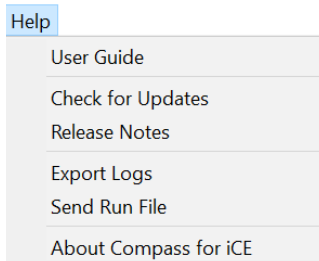


3. Once connected, open the **Instrument** menu again and click **Properties** to open the Properties window.

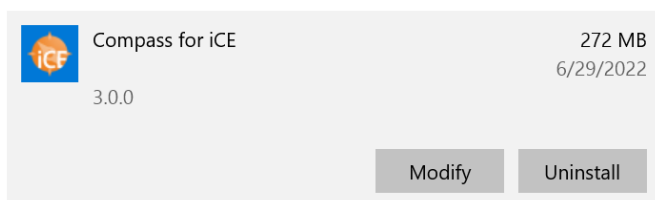


Determining the Compass for iCE Software Version Installed

1. Select **Help** in the main menu and click **About Compass for iCE**.



2. Or view from the Windows Add/Remove Programs.

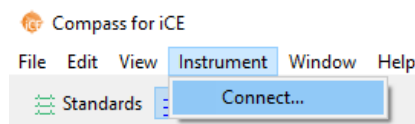


Upgrading Compass for iCE Software

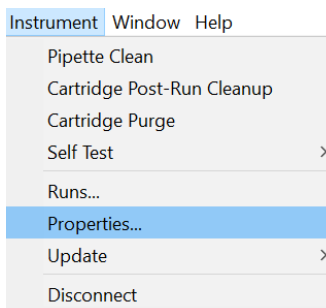
1. The Compass for iCE software installer can be provided on a CD or can be directly downloaded from a link provided by Technical Support to a local PC, network drive, or USB drive.
2. Run the installer (for example: Compass for iCE Installer-e4-3.0.0-0711.1523-win64), and follow the installation prompts.

Upgrading the Maurice Instrument Software

1. Contact Technical Support or your local Field Applications Specialist to receive the latest instrument software file (for example: kfr-installer-4.1.2022.06.29.21.58.35.b9d03b73d.tar.gz). Transfer the embedded installer file (*.tar.gz) to the Maurice PC (via a network connection or a USB drive).
2. Make sure that Compass for iCE software is connected to the instrument by selecting **Instrument** in the main menu, then clicking **Connect**.



3. Once connected, open the **Instrument** menu again, select **Update**, then select **Local**.



4. In the Open dialog window, browse to the location of the *.tar.gz file, select the file and click **Open** to initiate the update of embedded software. Follow the prompts to complete the update.

Verify the updates are correct by viewing both software versions in the **Help** menu and the **Instrument Properties** page.

biotechne®

R&D Systems™ Novus Biologicals™ Tocris Bioscience™ ProteinSimple™ ACD™

Contact Us



Trademarks and registered trademarks are the property of their respective owners.

PL1-0013, Rev. A