

Somatostatin

Summary

Somatostatin is a peptide hormone that has two biologically active forms, somatostatin-14 and somatostatin-28, that are formed from cleavage of a prohormone. It is also known as the growth hormone-inhibiting hormone.

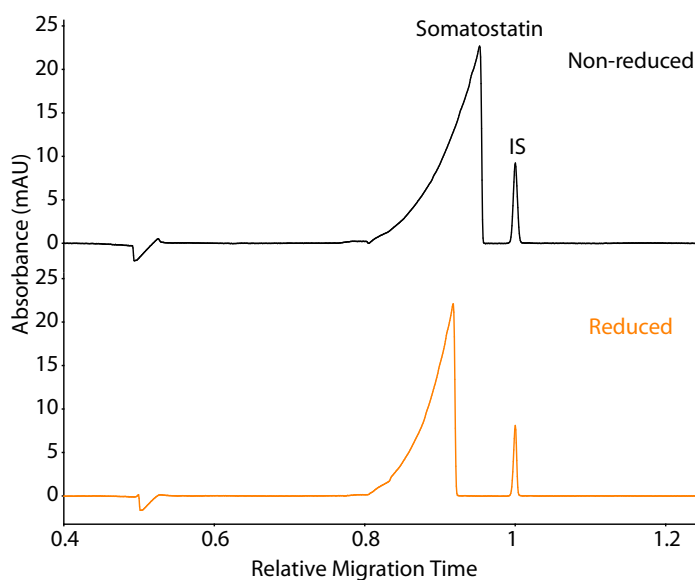
EDQM catalogue number

Somatostatin: S0945000, Batch 6

Maurice CE-SDS Method

Sample preparation: Somatostatin was diluted to 1 mg/mL with 1X Sample Buffer prior to treatment for 10 minutes at 70 °C in the presence of either 11.5 mM IAM (non-reduced) or 650 mM β ME (reduced).

Running conditions: Samples were injected for 8 seconds at 4600 V, followed by a 20-minute separation at 5750 V.



Maurice icIEF method

Sample preparation: Somatostatin was diluted to 0.42 mg/mL.

Ampholyte solution: Pharmalytes 8–10.5 (3.4%) and 3–10 (0.6%) containing 10 mM arginine and 8 M urea

Running conditions: 1 minute at 1500 V, 12 minutes at 3000 V

pI markers: 7.05 and 10.17

Imaging: Absorbance and fluorescence (10 seconds)

