

Somatropin

Summary

Somatropin is a form of human growth hormone (HGH). HGH is important for the growth of muscles and bones. Patients deficient in production of HGH may be treated with somatropin.

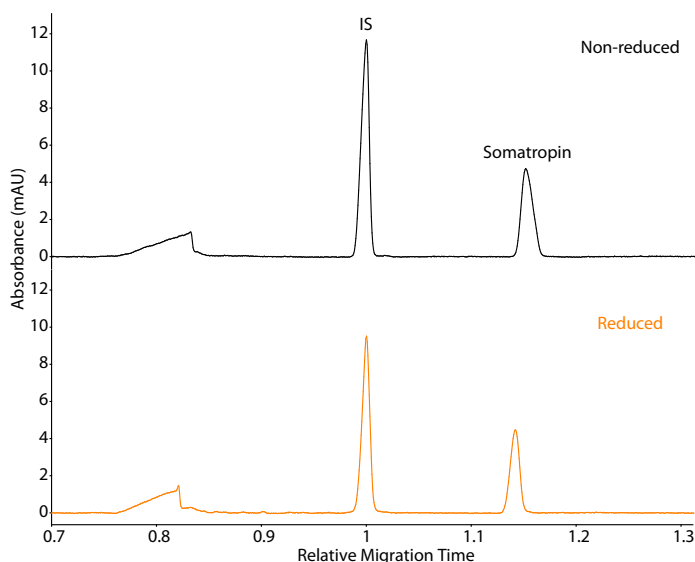
EDQM catalogue number

Somatropin: S0947000, Batch 3

Maurice CE-SDS Method

Sample preparation: Somatropin was diluted to 1.0 mg/mL with 1X Sample Buffer prior to treatment for 10 minutes at 70 °C in the presence of either 11.5 mM IAM (non-reduced) or 650 mM β ME (reduced).

Running conditions: Samples were injected for 30 seconds, followed by a 17-minute separation at 5750 V.



Maurice icIEF method

Sample preparation: Somatropin was diluted to 0.55 mg/mL.

Ampholyte solution: Pharmalytes 3–10 (4%) containing 8 M urea

Running conditions: 1 minute at 1500 V, 6 minutes at 3000 V

pI markers: 4.65 and 7.05

Imaging: Absorbance and fluorescence (20 seconds)

