

Pre-Qualified Tissue Bank consists of a set of high quality, pre-sourced and pre-tested samples, accessible to Professional Assay Services customers for RNAscope[™], BaseScope[™], and miRNAscope[™] ISH assays. Our tissue bank eliminates the need to identify and source tissues from a tissue vendor, while also saving time on tissue processing, handling and tissue validation. Pretreatment conditions have been optimized for each sample, ensuring that reliable data is obtained by using samples that have already passed stringent RNAscope quality control criteria.

HUMAN MULTI-TUMOR FFPE TMA

(10 CORES EACH):

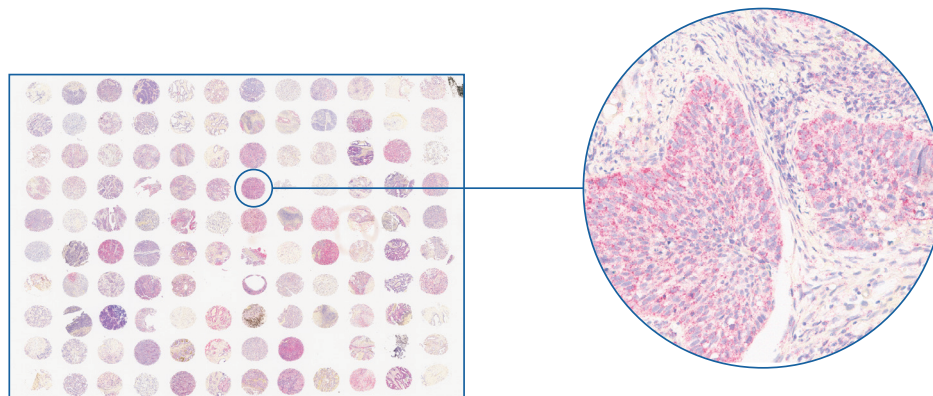
- Breast cancer
- Bladder cancer
- Ovary cancer
- Lung cancer
- Prostate cancer
- Melanoma cancer
- Kidney cancer
- Head and neck cancer
- Colorectal cancer
- Pancreas cancer

HUMAN NORMAL TISSUE FFPE TMA

(UP TO 3 DONORS EACH):

- | | | |
|--------------------|--------------------|----------------------|
| • Adrenal gland | • Kidney, cortex | • Skeletal muscle |
| • Breast | • Kidney, medulla | • Skin |
| • Cerebrum | • Liver | • Spleen |
| • Colon descendens | • Lung, parenchyma | • Stomach, fundus |
| • Cortex | • Lymph node | • Stomach, muscular |
| • Endocervix | • Normal tonsil | • Testis |
| • Endometrium | • Ovary | • Thymus |
| • Exocervix | • Pancreas | • Thyroid |
| • Fallopian tube | • Parotid gland | • Ureter |
| • Gallbladder | • Placenta | • Urinary bladder |
| • Heart | • Prostate | • Uterus, myometrium |
| • Ileum | • Seminal vesicle | |

Inventory subject to availability and may change. Please check with PASPre-Sales.ACD@biotechne.com for the latest update.

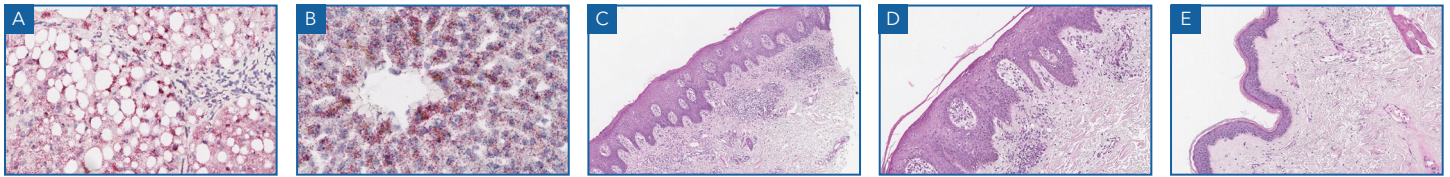


RNAscope positive control Hs-PPIB staining on pre-qualified multi-tumor TMA.

DISEASED AND MATCHED NORMAL (NAT*) TISSUE BLOCKS:

- Various solid tumors including NSCLC, CRC, breast cancer, DLBCL, pancreatic cancer, ovarian cancer, and others
- Inflammatory bowel disease (Crohn's Disease and Ulcerative Colitis) colon
- Non-alcoholic steatohepatitis (NASH) liver tissue
- Diabetic nephropathy and lupus nephritis kidney
- Psoriasis and atopic dermatitis skin samples
- COVID-19 positive lung

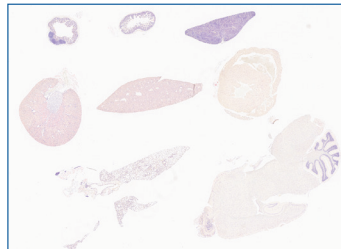
*Normal Adjacent Tissue



RNAscope staining for PPIB in (A) NASH liver and (B) normal liver. H&E staining in (C) atopic dermatitis, (D) psoriasis, and (E) normal skin.

ANIMAL TISSUES:

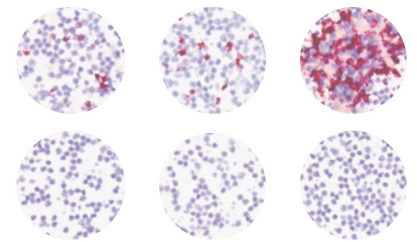
- Various cynomolgus monkey tissues with replicates from males and females
- Multi-organ tissue arrays from mouse and rat



Hematoxylin-stained mouse multi-organ tissue array containing brain, heart, spleen, jejunum, cecum, kidney, lung, thymus, and liver tissues.

CELL LINES:

- Induced PBMC cell pellets validated for upregulation of cytokines
- HPV control cell pellet array
- Control HeLa cell pellets



Induced (top) and uninduced (bottom) PBMC cell lines stained for TNF α (left), IL6 (middle), and IL1B (right).

PARTNER WITH PROFESSIONAL ASSAY SERVICES

- Trust your study to the experts in RNAscope, BaseScope, and miRNAscope ISH
- Have confidence in the science, data and research conclusions
- Receive actionable results in weeks rather than months

"We've had a great experience in working with ACD. Using their service team we are able to move faster through our testing for Phase I trial. We are very happy with the quality of data, thoroughness in the reports we receive and would highly recommend them for ISH assay development and implementation."

– Dr. Omar Kabbarah

Learn more about Professional Assay Services at acdbio.com/PAS



Learn more about our Pre-Qualified Tissue Bank at: acdbio.com/services/acd-tissue-bank
To request a quote, contact: PASPre-Sales.ACD@bio-techne.com