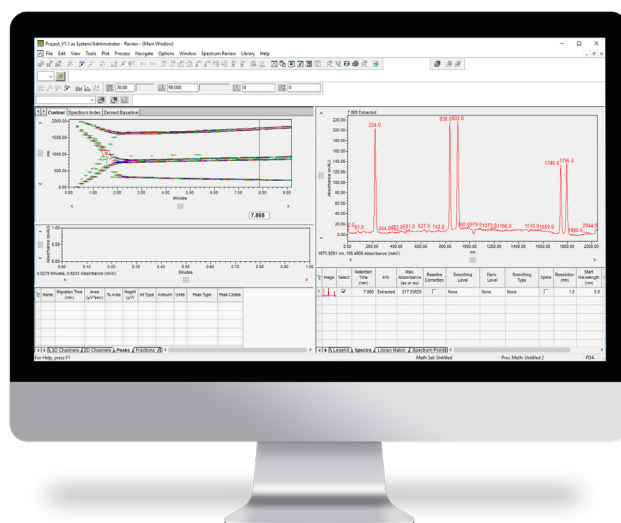


Maurice Empower® Control Kit Datasheet

Now you can run your Maurice platform directly from the Empower® software.



Utilizing Waters' Open Interface Portal (OIP) for multi-vendor hardware control, ProteinSimple's Maurice Empower® Control Kit enables seamless control of the Maurice platform with all key functions preserved and with full regulatory compliance, including 21 CFR Part 11 controls for industry-leading security and data integrity.

Fully Integrated Control of Maurice

Maurice Empower® Control Kit enables direct and complete control of the Maurice platform by Empower® 3 Software from Waters® Corporation, for users to collect, manage, and report Maurice results entirely with Empower®. Key functions include:

- Creating Method Sets
- Creating Sample Set Methods
- Running Sample Sets
- Control Panel: Status, Console and Diagnostics
- Viewing Data

Industry-Standard Regulatory Compliance

Designed for a data-secured, regulated lab environment, Maurice Empower® Control Kit is seamlessly integrated with Empower® software so that the audit trail functions of Empower® software are fully utilized. This gives you full confidence in the data integrity, repeatability, and accurate reporting, with full compliance of the system to regulations such as 21 CFR Part 11.

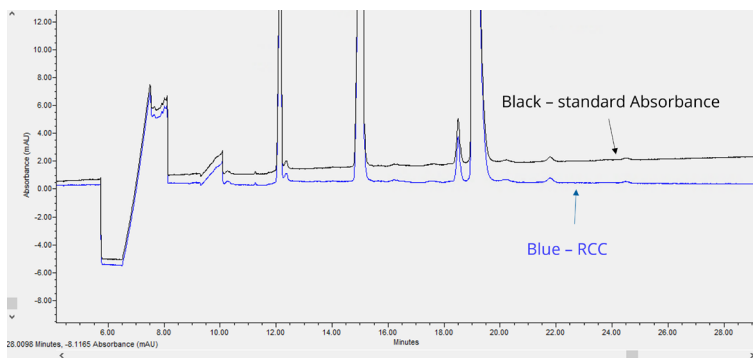


FIGURE 1. Stacked view of standard Absorbance channel and Reference Channel Correction (RCC)

Reference Channel Correction for CE-SDS Data

Data processing algorithm improves CE-SDS data quality by automatically removing any signal that can be attributed to lamp variability.

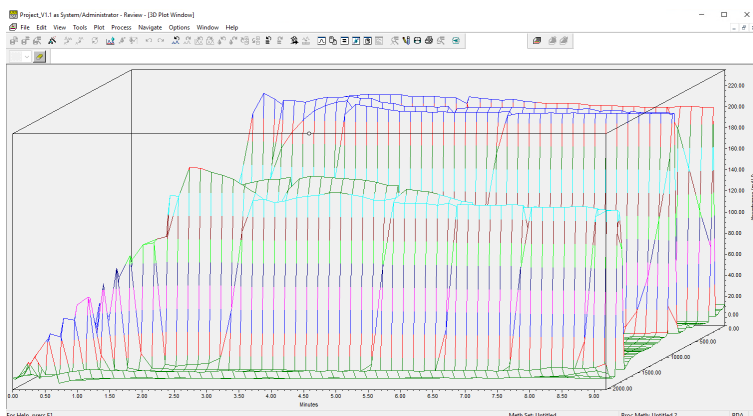


FIGURE 2. The 3D view of the Focus Series displays Time on the X-axis, Absorbance Units (mAU) on the Y-axis, and Pixel Position on the Z-axis.

3D View of Focus Series

Maurice Empower control enables a unique, flexible three-dimensional view of the time-dependent progression of the focusing of proteins along the pH gradient in the capillary for each injection.

Specifications

Product Name	Note
Maurice Empower® Control Kit* (P/N 104-0040)	For Personal and Enterprise versions. One single-system license provided per kit.
Empower instrument control license (icl) is included in kit	Waters® LAC/E32™ Acquisition Server is not included in the kit
Empower® 3 FR4, FR5 or FR6 (3.6.1) (Win10) is required	

Supported Models

Model	Part Number
Maurice	090-000
Maurice S.	090-001
Maurice C.	090-002
Maurice - OBM	090-153
Maurice C. - OBM	090-154

biotechne®

Contact Us

